

Administrating TextMap

User Guide

TextMap®, Version 9.1

- **Managing Case Staff**
- **Optimizing Case Files**
- **Replicating and Synchronizing**
- **Managing the Case Index**
- **Managing OCR Processing**
- **Managing Links to Cases**
- **Managing File Viewers**
- **Managing Case Tools and Options**
- **Managing Videos**
- **Managing File Locations**
- **Managing Plug-Ins**
- **Managing Accessibility Options**
- **Managing CaseMap Server**

Administrating TextMap User Guide

No part of this work may be reproduced or transmitted in any form or by any means, electronic or mechanical, including photocopying, recording, or by any information storage or retrieval system, without permission.

While the information contained herein is believed to be accurate, this work is provided "as is," without warranty of any kind. The information contained in this work does not constitute, and is not intended as, legal advice.

LexisNexis and the Knowledge Burst are registered trademarks of Reed Elsevier Properties Inc., used under license. TextMap is a registered trademark of LexisNexis, a division of RELX Inc. Other products or services may be trademarks or registered trademarks of their respective companies.

© 2017 LexisNexis. All rights reserved.

CaseMap®
CaseMap® Server
TextMap®
TimeMap®
NoteMap®
DepPrep®
Sanction®
Concordance®

Version: TextMap® 9.1
Release Date: February 28, 2017

Table of Contents

Chapter 1 Administrating TextMap	5
1 Managing Case Staff	5
Managing case staff	5
2 Optimizing Case Files	0
3 Replicating and Synchronizing	6
About replicating/synchronizing cases	6
Creating replica cases	9
Synchronizing cases	17
Taking video transcripts offline	18
4 Managing the Case Index	19
About the case index	19
Viewing linked exhibit index status	21
Rebuilding the case index	23
Modifying ignore words	24
5 Managing OCR Processing	27
About OCR processing	27
Viewing linked exhibit OCR status	28
Disabling OCR processing	33
6 Managing Links to Cases	34
Changing exhibit file paths	34
Changing the case exhibits path	36
7 Managing File Viewers	36
About file viewers	36
Adding/changing file viewers	37
Setting up custom file viewers	38
8 Managing Case Tools and Options	42
About case tools	42
Changing case options	44
9 Managing Videos	47
Changing video file paths	47
10 Managing File Locations	48
Managing/changing file locations	48
11 Managing Accessibility Options	49
Changing accessibility options	49
12 Managing CaseMap Server	50
Registering the CaseMap Server	50
Index	54

Administrating TextMap

User Guide

Administrating TextMap

Chapter

1

Administrating TextMap


Managing Case Staff


Managing case staff


One way to add security to your case is to add staff members to your case. You can add staff when you are first creating a new case with New Case Wizard. Or you can add staff any time. Adding new staff also allows staff members to add a password for the case.

Your IT or litigation department may have established guidelines for case security. Your organization may choose to:

- Not add staff members
- Add staff members, but do not have the staff members set a password
- Add staff members, and then set a company-wide password for all cases
- Add staff members, but then set a case-specific password
- Add staff members, and then have staff members set unique passwords for each case
- Add network folder level security and leave staff passwords as blank (recommended)

 New cases are not protected by passwords until you or other users create them. Passwords automatically default to blank, so you would simply type a password and verify it, and then click OK to save it. If you forget your password, you need to call CaseMap Technical Support to have them reset it for you.

 We recommend that you apply case security at the network folder level. This allows users to keep the default password set to blank, but ensures case security where the case is saved.

 You cannot add, modify, or delete users for SQL cases in TextMap. Managing SQL case staff is done in the CaseMap Admin Console.

Related Topics

- Adding users to cases
- Setting/changing case passwords
- Deleting users

Replicating and Synchronizing

About replicating/synchronizing cases

Replication and synchronization are TextMap features that permit case staff to work in replica copies of a master case (local or SQL) that can be merged to create one updated version of the master case. You can create replicas of local and SQL cases in TextMap.

Replication vs. Synchronization:


- Replication is creating an exact copy of a case while tracking the replicated file
- Synchronization is merging the replica to the master case, reconciling any updates or edits


When case users go on the road, they can take a replica along and make additions and updates to case records. While these individuals work in replicas, case staff back in the office can still make changes to the master case. When the replica is returned or emailed to the office, the latest content can be synchronized into the master case.

With TextMap, a replica can be synchronized repeatedly with the master case — without creating duplicate transcripts, annotations and redactions. This allows users on the road to email replicas back to the main office for synchronization each time significant updates are made, while continuing to work in the replica.

All replica name (local and SQL versions) must be unique. Creating a replica of a TextMap case is an exclusive process. Case staff cannot access the master case during this process.

A replica cannot be created if users are actively working in the case (synchronizing cases, or importing, updating, and deleting transcripts). Please notify case users to exit the case before creating a replica of a case. Password protection of replica is optional, however at least one user must be assigned to the case before a replica can be created.

 Create replica cases for staff who need to work from home or access a case during court or offsite depositions. Replica cases include access to linked files and exhibits, with the exception of Web sites and links to files in document management systems.

 For information on how to create a SQL case replicas in the CaseMap Admin Console, refer to the [CaseMap Server Answer Center](#).

Follow these guidelines to ensure synchronization success

Reference the following table for guidelines and considerations when replicating and synchronizing cases.

Replication and Synchronization Guidelines and Considerations

Replica copies can be saved to a network folder and shared among users.

At least one user must be added to a case before a replica can be created; passwords are optional.

Replication and Synchronization Guidelines and Considerations

Case staff in the master case are exported to the replica for both local and SQL cases.

* If you add additional staff to a replica, they are not added to the master case when synchronization occurs. For a local case, add new users by clicking Tools > Case Staff. For a SQL case, new users are added in the CaseMap Admin Console and need to then be assigned to a role and the SQL case.

A replica cannot be created if users are actively working in the case (synchronizing cases, or importing, updating, and deleting transcripts).

You can make as many replica of the master case as needed.

Replicas can be synchronized with the master case repeatedly; allowing users to continue working in the replica while emailing updated copies back to the office for synchronization.

Always merge replica copies with the master case when they are returned, regardless if a user says updates were not made to the file.

Exported copies of the case cannot be synchronized with a master case. Only copies made during a replication process can be synchronized.

Convert replicas to create a new master case when a case file corrupts, information is lost on the network, or backups are lost/corrupt.

* In this instance, any transcripts or additional information added in the corrupt master case that does not exist in the replica may need to be imported/added to replace lost data.

See the Synchronization Rules for Issues table in this help topic for limitations regarding issues in a TextMap replica.

[Reference specific synchronization rules for issues](#)

Reference the following table for specific synchronization rules, particularly regarding issues.

Synchronization Rules for Issues

TextMap only supports adding issues from one case to another. The synchronization feature does not change the issue outline hierarchy in the master case if you have rearranged it in the replica.

TextMap adds new issues to ensure that links are not lost. TextMap ignores the issue outline arrangement, issue colors, and renamed or deleted issues when adding issues from the replica.

After synchronization completes, case staff must combine duplicate issues or remove unwanted issues. The Delete Issue Wizard allows you to move links from one issue to another. If the issue is linked to any annotations, the Delete Issue Wizard displays.

Synchronization Rules for Issues

TextMap matches issues from one case to another by issue name only. If new issues are created in the replica, they are only added as a new issue in the master case if they are linked to annotations.

* Issues that are added, edited, renamed, or deleted in the replica, and are not linked to an annotation, are not updated in the master case when synchronization occurs.

TextMap does not synchronize the following issue changes:

- Issue outline levels or order
- Issue names
- Issues deleted in the replica are not deleted in the master
- Issues deleted in the master are added back when synchronizing with a replica

TextMap does copy links for new annotations to the master case.

TextMap completely replaces annotations that are edited in a recent replica. The replica copy of the annotation is synchronized into the master case if the Last Update Time Stamp in the replica is later than that of the master case's Last Update Time Stamp.

Reference specific synchronization rules for redactions

Reference the following table for specific synchronization rules, particularly regarding redactions.

Synchronization Rules for Redactions

TextMap creates new redactions in the master case that do not exist in the existing transcript.

Redaction reasons are created in the master case if the reason does not exist in the existing transcript.

TextMap synchronizes the following changes into the master case for redactions that already exist:

- For single redactions, the existing redaction will expand to cover the newly selected transcript text.
- For multiple redactions, the existing redaction will expand to cover the newly selected transcript text, but once merged, they will not retain any creation or update history.

Related Topics

[Creating replica cases](#)

[Synchronizing cases](#)

[Taking video transcripts offline](#)

Creating replica cases

The Create Replica Wizard guides you through the steps of creating a replica copy of for local and SQL cases. The wizard offers options for how you want to save the replica. You can save a replica copy on your computer along with copies of linked documents. Or you can save the replica to a specific location on your network or email it. The last two options do include copies of linked documents.

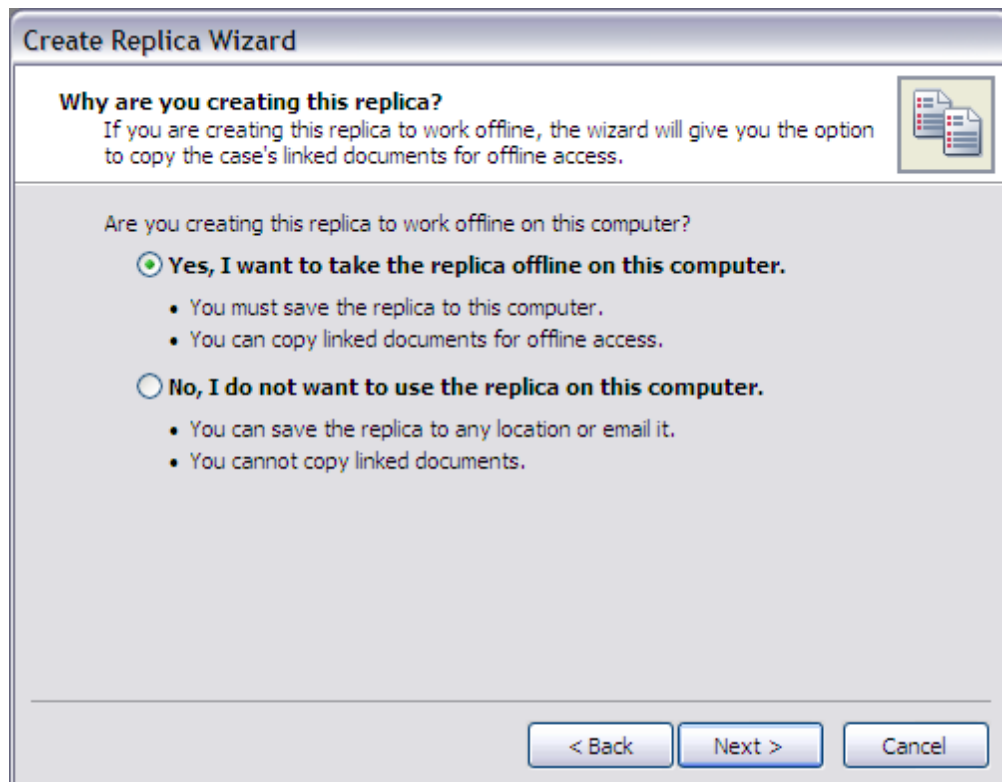
- ☑ If you are working with SQL cases, the replication process is nearly identical to creating a replica of a local case. At least one user must be assigned to a SQL case in the CaseMap Admin Console before a replica can be created. All users assigned to a SQL case will be exported when the replica is created. For SQL cases, you also have the option to password protect the replica.

Synchronization of all replicas with the master case is done in the TextMap client application. If new users are added in the replica, they must also be added in the CaseMap Admin Console as users and be assigned to the case for synchronization to be successful.

- ☑ For more information on how to create a TextMap SQL case replica in the CaseMap Admin Console, see the following topic: [Creating replica SQL cases in the CaseMap Server Answer Center](#).

[To create a case replica](#)

1. In **TextMap**, open the case for which you want to make a replica.
2. On the **File** menu, click **Synchronize**, and then click **Create Replica**.
3. When the **Create Replica Wizard** launches, click **Next**.
4. In the **Why are you creating this replica?** dialog box, choose where you want to save the replica.



- Select **Yes, I want to take the replica offline on this computer** to save the replica and copy linked documents.
 - Select **No, I do not want to use the replica on this computer** to save the replica to another location. You cannot copy linked documents when selecting this option.
5. Click **Next** to continue.
 6. In the **Name and Location** dialog box, type in a name for the replica.

Create Replica Wizard

Name and Location
Where do you want to save the replica, and what do you want to call it?

Enter a name for the replica file.

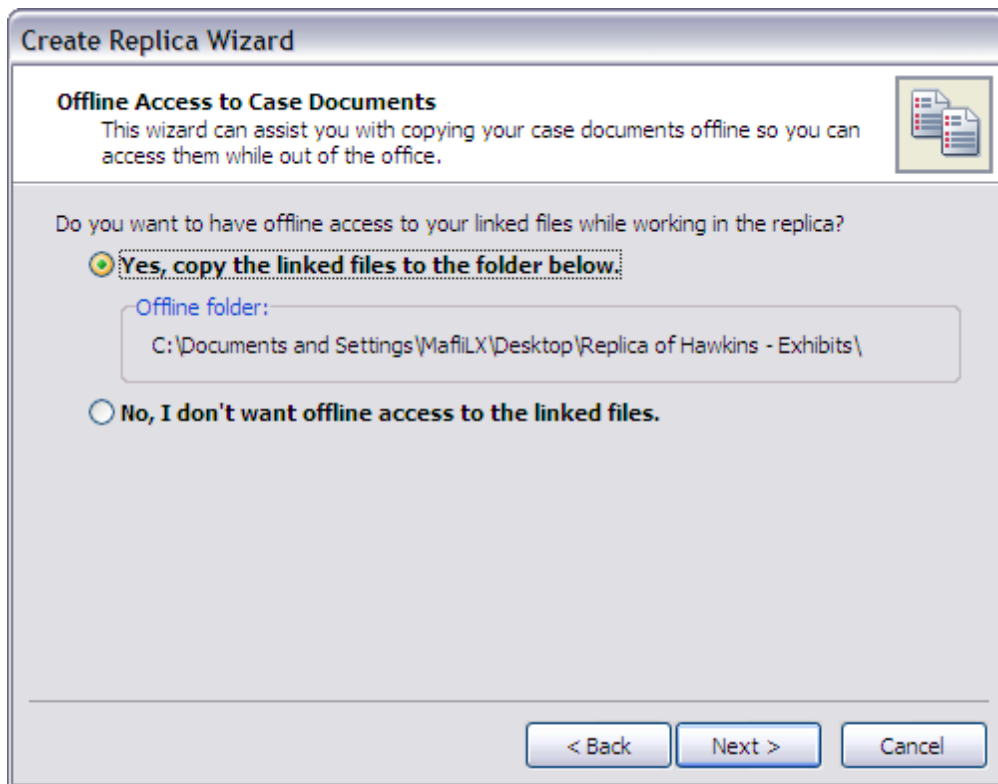
File name:

Browse to the folder where the replica should be saved.

C:\Documents and Settings\MafilX\Desktop

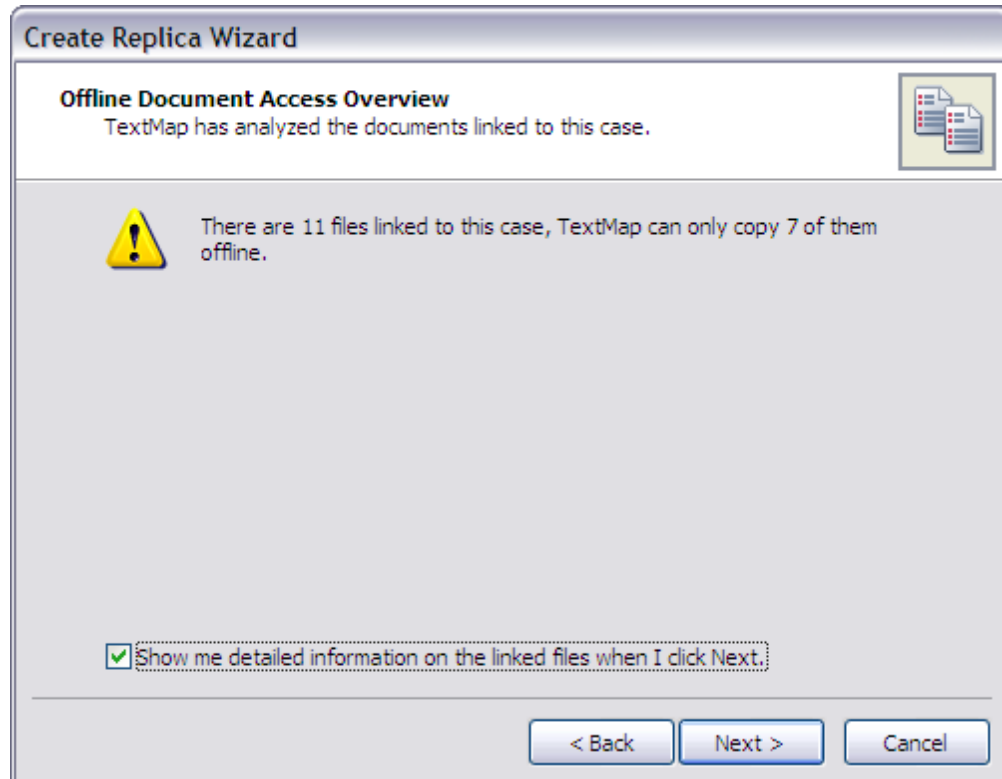
To continue, click Next.

7. Click **Browse** to navigate to the folder where you want to save the replica, then click **Next**.
8. In the **Offline Access to Case Exhibits** dialog box, select whether you want offline access to linked documents while working in the replica.

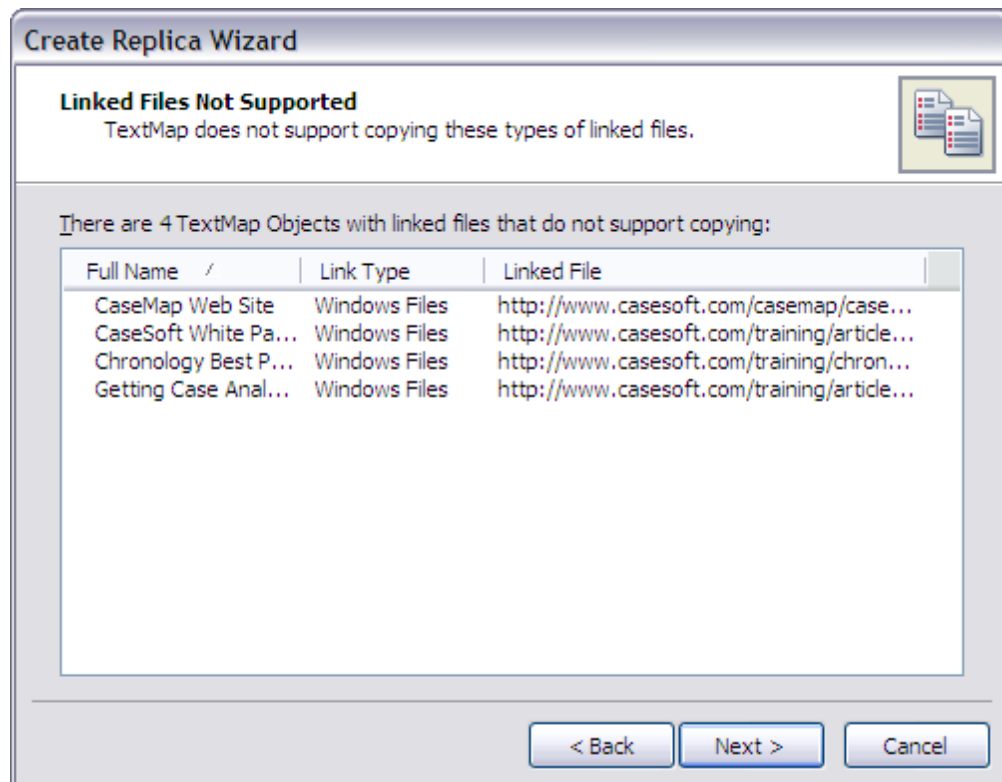


Yes, copy the linked files to the folder below to access the documents offline

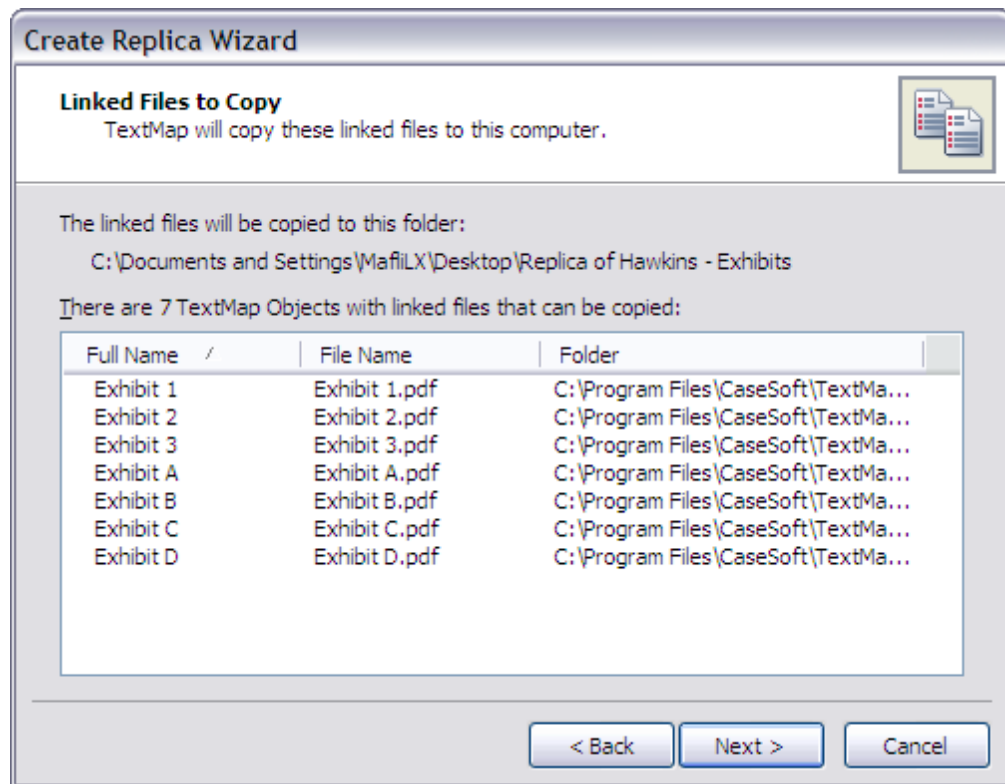
1. Click **Next** to access the Offline Document Access Overview dialog box to review how many files are linked to the case, and how many TextMap can copy for you to use offline.



2. Select the **Show me detailed information on the linked files when I click Next** check box to view a listing of linked files that cannot be copied, then click **Next**.
3. In the **Linked Files Not Supported** dialog box, review the list of files that cannot be copied, such as linked documents that reside on web sites. TextMap will copy web site addresses to the replica.



4. Click **Next** to access the Linked Files to Copy dialog box and review a listing of all documents that can be copied.

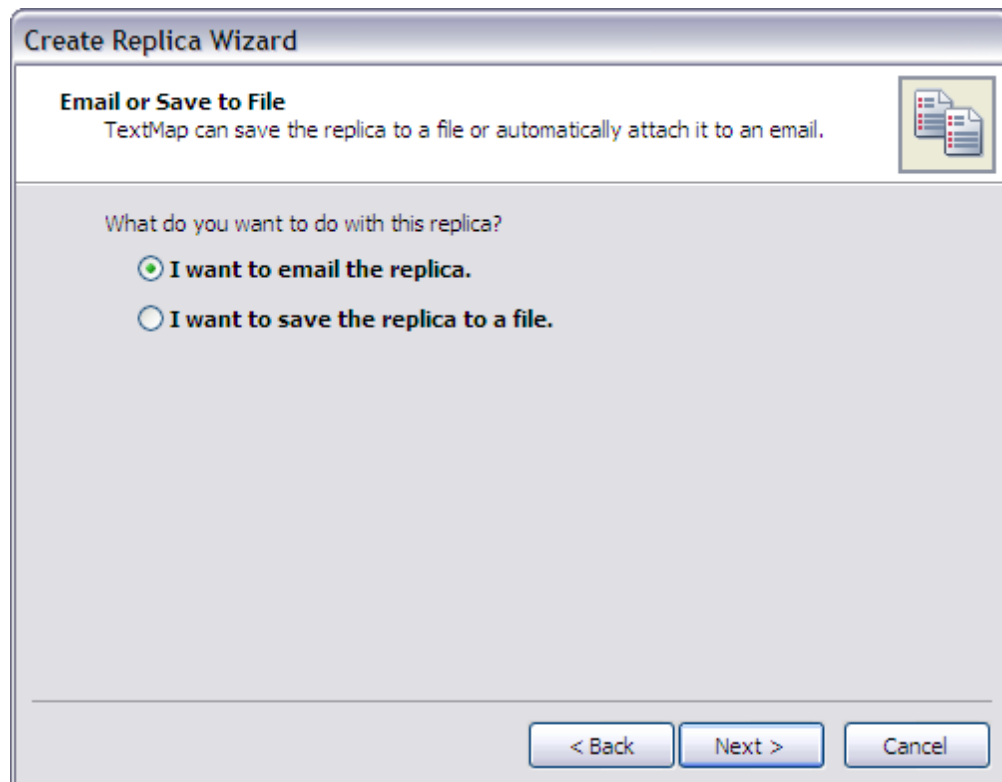


Linked files are saved in an Exhibits folder to the same location you specified to save the replica.

No, I don't want offline access to the linked files

When this option is selected, linked documents will not be copied when the replica is created.

Click **Next** to access the Email or Save to File dialog box.



I want to email this replica

1. Click **Next** to open the Emailing the Replica dialog box.
2. In the **File Name** field, type in the name of the replica, then click **Next**.
3. In the **Reduce Email Attachment Size** dialog box, select whether you want to create a zip file of the replica before attaching it to the email, then click **Next**.
4. Click **Finish** when the process completes.

A Microsoft Outlook email opens with the replica case attached and information regarding the file that can be customized according to your needs.

I want to save the replica to a file

1. Click **Next** to open the **Name and Location** dialog box.
2. In the **File Name** field, type in the name of the replica.
3. Click **Browse** to navigate to the folder where you want to save the replica.
9. Click **Next** to continue.
10. In the **Ready to Create Replica** dialog box, verify the path where the replica will be saved, then click **Next**.
11. In the **Completing the Create Replica Wizard** dialog box, click **Finish** when the process completes.

The Case Log On dialog box displays so you can log back in to the master case.

The replica is now saved to the location specified and is ready for use. When the the replica is opened, it will display [Replica] in the case name.

Related Topics

[About replicating/synchronizing cases](#)

[Synchronizing cases](#)

[Taking video transcripts offline](#)

Synchronizing cases

Synchronization in TextMap allows you to update the master case with new transcripts, coded issues, and added annotations made in the replica. During this process, TextMap analyzes the differences between the two cases and copies changes made in the replica to the master case.

Synchronization may take a few minutes depending on the number of transcripts, annotations, redactions and words in the transcripts to be indexed during the process. TextMap does not create duplicates of transcripts, annotations or redactions during synchronization, but updates existing transcripts with the new annotations and redactions. Refer to the [About replicating/synchronizing cases](#) topic for details on guidelines, considerations, and limitations for this process.

- ☑ If you are working with SQL cases, the replication process is nearly identical to creating a replica of a local case. At least one user must be assigned to a SQL case in the CaseMap Admin Console before a replica can be created. All users assigned to a SQL case will be exported when the replica is created.

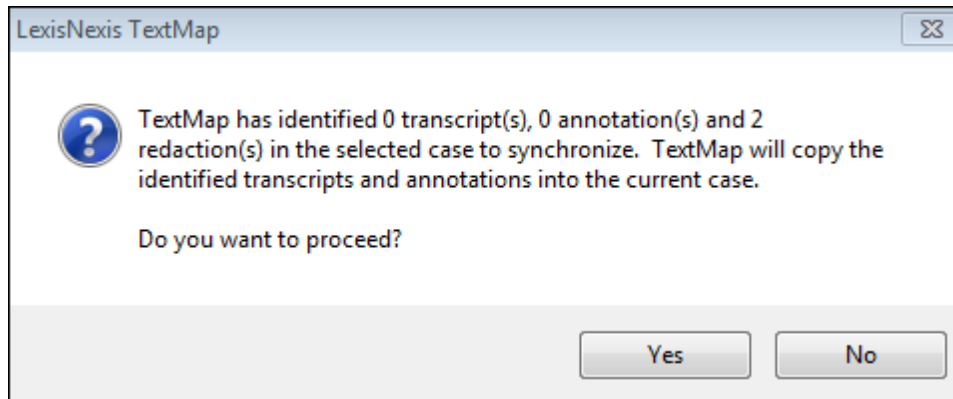
Synchronization of all replicas with the master case is done in TextMap. If new users are added in the replica, they must also be added in the CaseMap Admin Console as users and be assigned to the case for synchronization to be successful.

- ☑ For more information on how to create a SQL case replica in the CaseMap Admin Console, see the following topic: [Creating replica cases in the CaseMap Server Answer Center](#).

To synchronize a case

1. In **TextMap**, open the case for which you want to make a replica.
2. On the **File** menu, click **Synchronize**, and then click the **Synchronize** button.
3. In the message box, click **OK**.
4. In the **Select another TextMap case to synchronize with** dialog box, navigate to the case you want, then click **Open**.

5. In the message box listing, review identified transcripts, annotations and redactions to synchronize, click **Yes** to proceed.



The master case now includes updates made from the replica.

- ✍ After synchronization completes, case staff must combine duplicate issues or remove unwanted issues. The Delete Issue Wizard allows you to move links from one issue to another.

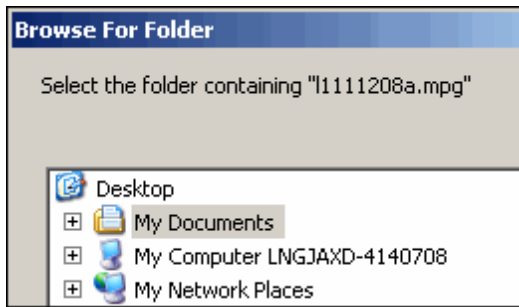
Related Topics

- [About replicating/synchronizing cases](#)
- [Creating replica cases](#)
- [Taking video transcripts offline](#)

Taking video transcripts offline

If you have imported video transcripts into your case, you can copy the files to your computer's hard drive so you can play them offline. You can copy video transcripts to your computer's hard drive by using a portable device (like a USB drive). Or you can burn a copy of the original CD to take with you and play the video files directly from the CD.

If you create a replica of the case that includes video transcripts and try to play them on your laptop, TextMap tries to locate the file in its original stored location. If it does not locate the video file (especially if it is stored on your network), then a message displays in the Browse For Folder dialog box that displays the video file name.



If you have a copy of the video transcripts files stored on your laptop, then you can navigate to the folder on your hard drive to locate the file and play it. If the video transcript files are copied onto a CD, then you can navigate to the laptop's CD/DVD drive (often D: instead of E: on your office computer). Browse to and then select the folder/driver where the video is located, then click OK.

Related Topics

[About replicating/synchronizing cases](#)

[Creating replica cases](#)

[Synchronizing cases](#)

Managing the Case Index

About the case index

TextMap creates a word index when you import transcripts into a case. TextMap reads the case data and compiles an index based off each word it reads. The index is used when you run searches so you can locate important words, dates, and text phrases easily in your case transcripts and linked files.

When you import new files into a case, TextMap will update the case index to include those files so you can capture the data in new searches or re-run previous searches on the new files. We recommend that you do not run searches while the indexing process is occurring because you may not receive complete search results until all new files have been indexed. If you do run a search when the index process is still running, a message displays at the top of the Search Results pane that states: Results may be incomplete; TextMap was updating the index when you ran the search.

If another case user has indexed the case using a previous or later version than you have installed, you may not be able to index the case until you upgrade to the latest TextMap version. To search in the current case, you need to rebuild the index or upgrade to the latest version of TextMap.

TextMap indexing only works in version 7 cases; indexing is not backwards compatible on previous version cases. If TextMap encounters a problem during the index process, it will disable indexing for the case. You may continue to use the case, but the Search functionality will not be available. We recommend that you close the case and reopen TextMap. If the

problem continues, contact CaseMap Technical Support at 800.833.3346 (option 3) or casemap.support@lexisnexis.com.

As new or updated transcripts are imported into the case the index rebuilds and the word count reflects an updated total as new words are added to the list. You can also rebuild the index in a case.

TextMap indexes:

- New or updated transcripts
- Annotations and notes
- Case issue names
- Linked exhibits


TextMap automatically indexes edits to annotations, notes, and case issue names. Similarly, if you delete an annotation, note, or issue, the index is automatically updated to reflect the changes.

Learn why some words are not indexed


TextMap comes with a pre-defined list of ignore words that it skips while indexing case information. Ignore words are words that are automatically excluded from a case index. The ignore word list includes the most common words in the English language (and, but, is, if, the). Ignore words are words you would generally not search for. Eliminating these words from the index ensures that searches run faster and more efficiently.

You can also modify the ignore word list. See [Modifying ignore words](#).

To verify if indexing is complete

1. In the lower right corner of TextMap, move the mouse pointer over the **Index** icon .
2. Now look in the lower left corner of TextMap to see whether the **Not Indexing** message displays.

If this message displays, you can run your search and get the latest search results on case data.

If this message does not display, the reindexing process is still running and it is best to run any searches after it completes. When the indexing process is running, the icon changes to display a clock .

Related Topics

- [Rebuilding the case index](#)
- [Viewing linked exhibit index status](#)
- [Modifying ignore words](#)
- About searching

Viewing linked exhibit index status

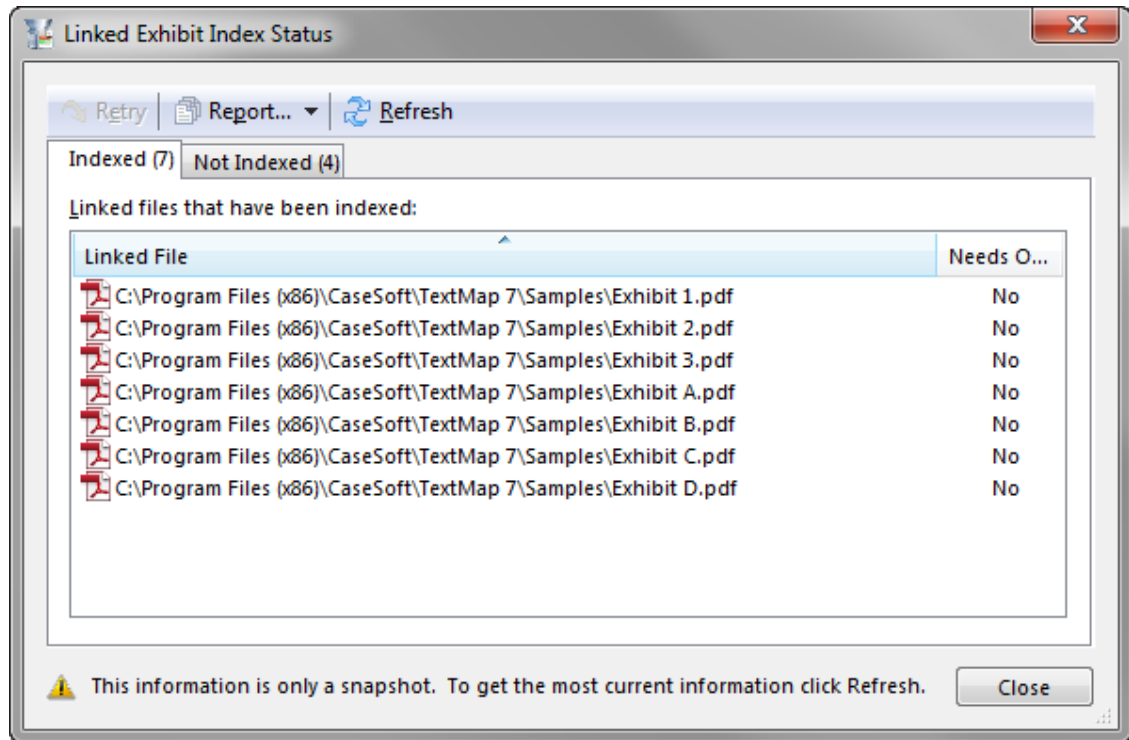
The Linked Exhibit Index Status dialog box allows you to track your case index status for files that were successfully indexed and those that were not indexed. The Not Indexed tab lists each file that failed during indexing and provides the applicable reason code. You can try to reindex files that were unsuccessful and then refresh the list to see if it was later indexed. You can also save a report of all indexed or non-indexed files for reference purposes.

TextMap indexing considerations include:

- TextMap does not index some media files (.mpg, .wmv, .avi). These files types will display in the Not Index tab of the Linked File Index Status dialog box.
- Media files that can be indexed but are corrupt or otherwise encounter an error during the OCR process will display in the Failed tab of Linked File OCR Status dialog box.
- TextMap does not index links to document management systems like Concordance or CaseMap.
- TextMap does not index URLs (including linked files to Concordance EV).
- TextMap does index file paths with more than 260 characters or that contain invalid characters.
- TextMap cannot index files locked as read-only.
- TextMap cannot index files or files saved in folders that contain insufficient permissions.
- TextMap cannot index encrypted PDFs.
- TextMap cannot index corrupt files or non-exist local files.

To view linked exhibit index status

1. On the **Case Tools** ribbon, click **Case Index**.
2. On the submenu, click **Linked Exhibit Index Status**.
3. In the **Linked Exhibit Index Status** dialog box, click the **Indexed** tab to view a list of all documents that were successfully added to the case index.



You can sort the Linked File list in ascending (default) or descending order.

Linked files display an icon depicting its file type.

- Optional: Click the **Not Indexed** tab to view all documents that did not index properly.

The Reason column provides a description for why the document was not indexed.

You can sort the Linked files that have not been indexed and Reason columns in ascending (default) or descending order. You can also resize the columns within the tab.

TextMap does not support indexing linked files that are URLs to a website or to a document management system.

- To try indexing a file again, select the file displaying in the **Not Indexed** tab and then click the **Retry** button.
- In the message box, click **OK**.
- Click the **Refresh** button to ensure that the most current information displays on each tab once indexing is complete.
- Click **Close** when you are finished.


To print a Linked Exhibit Index Status report

- On the **Case Tools** menu, click **Case Index**.
- On the submenu, click **Linked Exhibit Index Status**.
- In the **Linked Exhibit Index Status** dialog box, click the tab for which you want to save

the data: **Indexed** or **Not Indexed**.

4. Click the arrow on the **Report** button and then click **Save Standard Report** or **Save Debug Report**.
5. In the **Save Report** dialog box, navigate to the folder where you want to store the report.
6. Click the **Save** button.

The file is saved as a .csv file in the folder you selected.

-  When you click on the Report button, there is an option for Save Debug Report. This report option is for CaseMap Technical Support to use in resolving issues with a file that did not index properly.

Related Topics

- [About the case index](#)
- [Rebuilding the case index](#)
- [Modifying ignore words](#)
- [Viewing linked exhibit OCR status](#)

Rebuilding the case index

You can rebuild case indexes to restore an index in a copy of a case. For more information, see [Creating replica cases](#).

Reasons to rebuild the case index:

- When you need to restore the index in a copy of the case (if you think the index is possibly corrupt or out of sync).
- When you have edited the Ignore Word list.

To rebuild the case index

1. On the **Case Tools** menu, click **Case Index**.

You can also right-click on the Index icon  in the lower right corner of TextMap and click Rebuild case index.

2. On the submenu, click **Rebuild Case Index**.
3. In the message to confirm the process, click **Yes**.

The index rebuild process automatically starts and runs in the background while you work in the case.

If you run a search while rebuilding the index, a message displays that states this process is running and the search you are trying to run may not return precise results. We recommend that you wait until the process completes before running a search.

Related Topics

- [About the case index](#)
- [Viewing linked exhibit index status](#)
- [Modifying ignore words](#)
- [Creating replica cases](#)

Modifying ignore words

TextMap provides you with a default, global Ignore List and a Case Ignore Words list. Both lists are used by TextMap to skip or ignore words and text from both lists during searches. Words or alphanumeric text can be added or deleted from either list. When search queries are performed, any words or text added to the lists are skipped and not included in search results or tallied as search "hits".

Ignore List vs. Case Ignore Words

- **Ignore List** — This is TextMap's default, global listing of all ignore words and is automatically included when each case is created. Any changes you make to the Ignore List will apply to the current case and all future cases created in TextMap. Access the default Ignore List from the Tools menu by clicking Options and clicking the Ignore Words tab.
- **Case Ignore Words** — Any additions or deletions you make to the Case Ignore Words list apply to the current case only. Access the Case Ignore Words list from the Tool menu by clicking Case Index and then clicking Case Ignore Words.

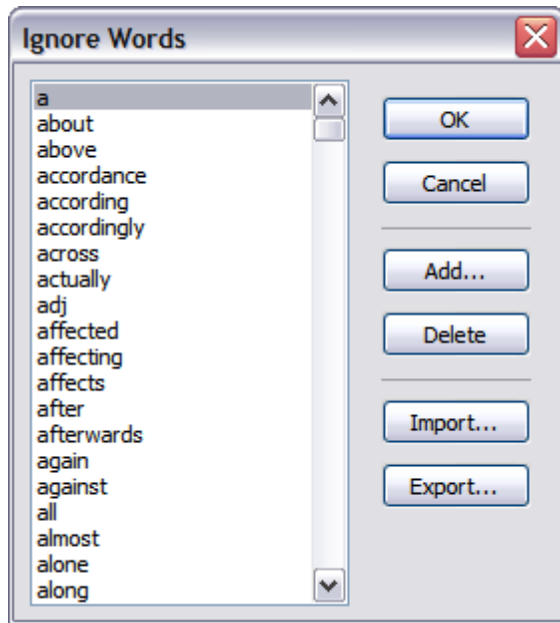
If you modify the ignore word lists, you will want to rebuild the case index to reflect those changes. See [Rebuilding the case index](#).

💡 When you create new cases, you may want to review words included in the Ignore List from previous cases. Use the Case Words Ignore List to add words that are specific to current case needs.

You can export either ignore word list to review all words or print a list of words to reference. You can also import the ignore word lists to use in other cases.

[To modify the Case Ignore Words list](#)


1. On the **Case Tools** ribbon, click **Case Index** and then click **Case Ignore Words** to open the Ignore Words dialog box.



2. Click the **Add** button to add a new term to the list.
3. In the **Ignore Words** dialog box, type in the new terms, then click **OK**.
4. Click the **Delete** button to remove a highlighted word from the list.
5. Click **OK** to save your changes.

To export the Case Ignore Words list

1. On the **Case Tools** menu, click **Case Index** and then click **Case Ignore Words** to open the Ignore Words dialog box.
2. Click the **Export** button.
3. In the **Export Ignore Words** dialog box, locate the directory folder where you want to save it.
4. In the **File Name** box, type in the name you want, then click **Save**.

 You may want to name the ignore list file by case name or type, if you intend to import it into other similar cases.

To import a Case Ignore Words list into a case

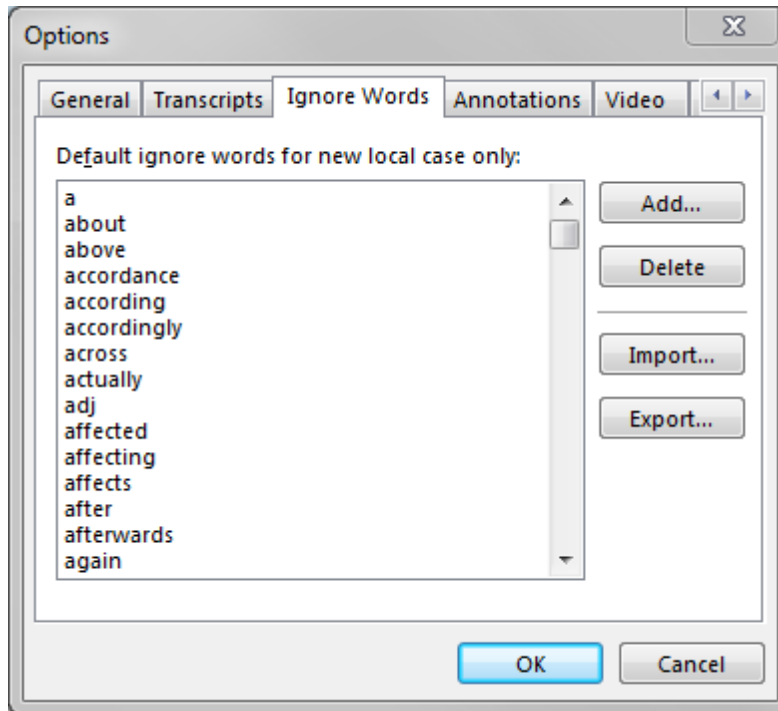
1. On the **Case Tools** menu, click **Case Index** and then click **Case Ignore Words** to open the Ignore Words dialog box.
2. Click the **Import** button.
3. In the **Import Ignore Words** dialog box, select the **Case Ignore Words** list you want to

import, then click **Open**.

The new Case Ignore List is now added to the case.

To modify the global Ignore List

1. On the **File** menu, click **Options**.
2. In the **Options** dialog box, click the **Ignore Words** tab.



3. Click the **Add** button to add a new term to the list.
4. In the **Ignore Words** dialog box, type in the new terms, then click **OK**.
5. Click the **Delete** button to remove a word from the list.
6. In the **Default ignore words for new case only** box, highlight the word and click the **Delete** button.
7. Click **OK** to save your changes.

To export the global Ignore List

1. On the **File** menu, click **Options**.
2. In the **Options** dialog box, click the **Ignore Words** tab.
3. Click the **Export** button.
4. In the **Export Ignore Words** dialog box, locate the directory folder where you want to save it.

5. In the **File Name** box, type in the name you want, then click **Save**.

To import an Ignore List into a case

1. On the **File** menu, click **Options**.
2. In the **Options** dialog box, click the **Ignore Words** tab.
3. Click the **Import** button.
4. In the **Import Ignore Words** dialog box, select the file you want to import, then click **Open**.

The new Ignore List is now added to the case.

Related Topics

About advanced searching

[About the case index](#)

[Viewing linked exhibit index status](#)

[Rebuilding the case index](#)


Managing OCR Processing

About OCR processing

By default, TextMap does not attempt to OCR a PDF that has already been processed. It determines whether or not it should OCR a PDF based on how much searchable text it finds on top of the image portion for each page, and whether that text is a consistent length on each page (e.g., a header or footer repeated on each page).

After files are imported into a case and a case index is created, TextMap performs OCR (optical character recognition) processing on image files so that the text content can be indexed for full-text searching. TextMap runs the OCR process in the background. You can continue working in the case but should wait to search data or annotate files until processing completes and the case is updated with the latest information.

TextMap OCR processes imported files one at a time until all files in the queue succeed. Once OCR processing completes, TextMap will update the case index. You can then view the image files, navigate search hits, and annotate images in DocManager.

You can easily check the case's OCR status by placing your cursor over the OCR icon  in the lower right corner of TextMap. An OCR is idle message displays on the status bar when no files are in queue for OCR processing. You can disable OCR processing on your computer. Other case user's computers that have OCR enabled will process imported files and update the case for you.

 [View supported file formats](#)

Supported File Formats		
File Type	Multi-page Supported	Color Support (Black and White, Grayscale, Color)
Bitmap (*.bmp)	No	All
JPEG (*.jpg, *.jpeg)	No	Grayscale, Color
Personal Computer eXchange (*.pcx)	No	All
Portable Document Format (*.pdf)	Yes	All
Portable Network Graphic (*.png)	No	All
Tagged Image File - LZW, PackBits, Uncompressed (*.tif, *.tiff)	Yes	All
Tagged Image File - Compressed G3/G4 (*.tif, *.tiff)	Yes	Black and White
Graphics Interchange Format (*.gif)	No	All

[Related Topics](#)

About importing data

[Viewing linked file OCR status](#)

[Disabling OCR processing](#)

Viewing linked exhibit OCR status

The Linked Exhibit OCR Status dialog box allows you to track your OCR processing status, to include OCR files that:

- succeeded
- failed

- are marked as Do Not OCR
- are still in the queue for processing
- are PDFs that were skipped.

If a file failed OCR processing, you can select it and try to OCR process it again. You can also save a report of the OCR status for reference purposes. Media files that can be indexed but are corrupt or encounter an error during OCR processing display in the Failed tab of the Linked File OCR Status dialog box.

If you close the case or attempt to rebuild the index while the OCR processor is processing a file on your computer, the image will not be processed. Any remaining images in the queue will not be processed until you or another case user reopens the case. When the case is re-opened, CaseMap automatically starts OCR processing for files in saved the queue.

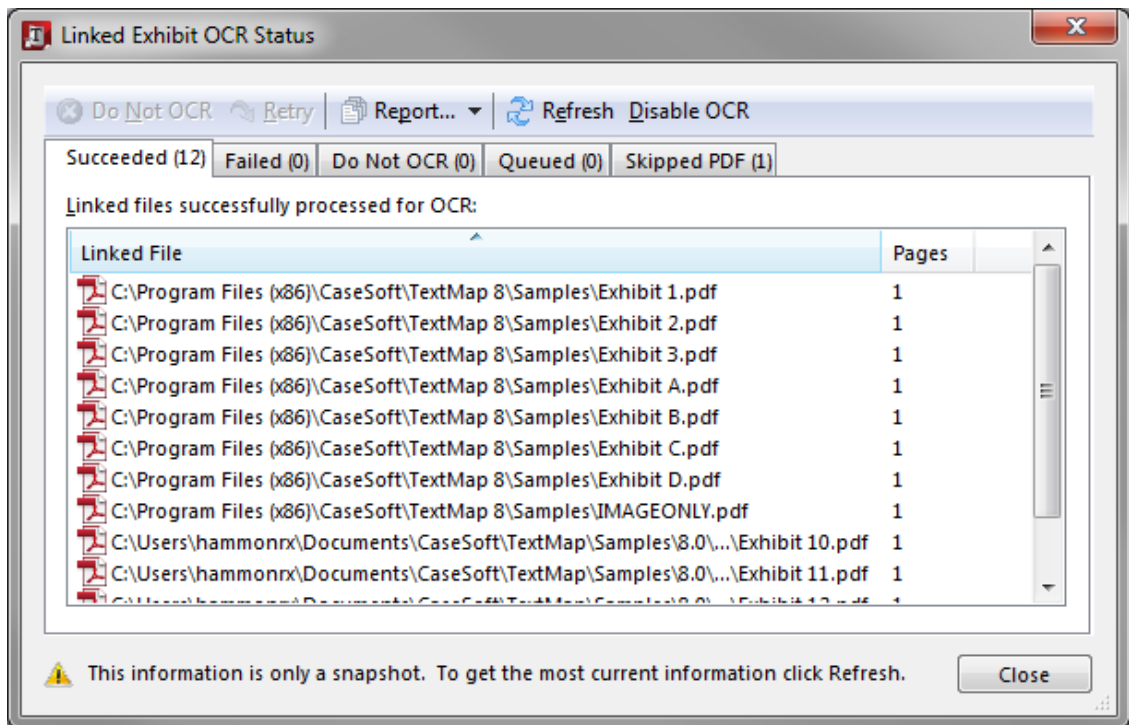
If you prefer to disable OCR processing on your computer, click the Disable OCR button in the dialog box's toolbar. Imported files will still be indexed and OCR processed when other case users open the case and have OCR enabled on their computer.

Click the Refresh button to update the Linked File OCR Status dialog box with current information. If you do not click the Refresh button, you cannot select a file(s) to stop it from OCR processing.

The Retry button starts the OCR process again for any files selected. Once the images are re-processed, the index is updated with the content. You can Retry any file that is not already queued for OCR processing, including a file(s) that were previously marked as Do Not OCR, or those where OCR processing was skipped. If OCR processing completed successfully for a file since the last time the Linked File OCR Status dialog box was refreshed, the file would move from the Queued tab to the Succeeded tab. If the file failed to process, it would display on the Failed tab. If another case user had already marked it as Do Not OCR, then the file would display on the Do Not OCR tab.

To view linked exhibit OCR status

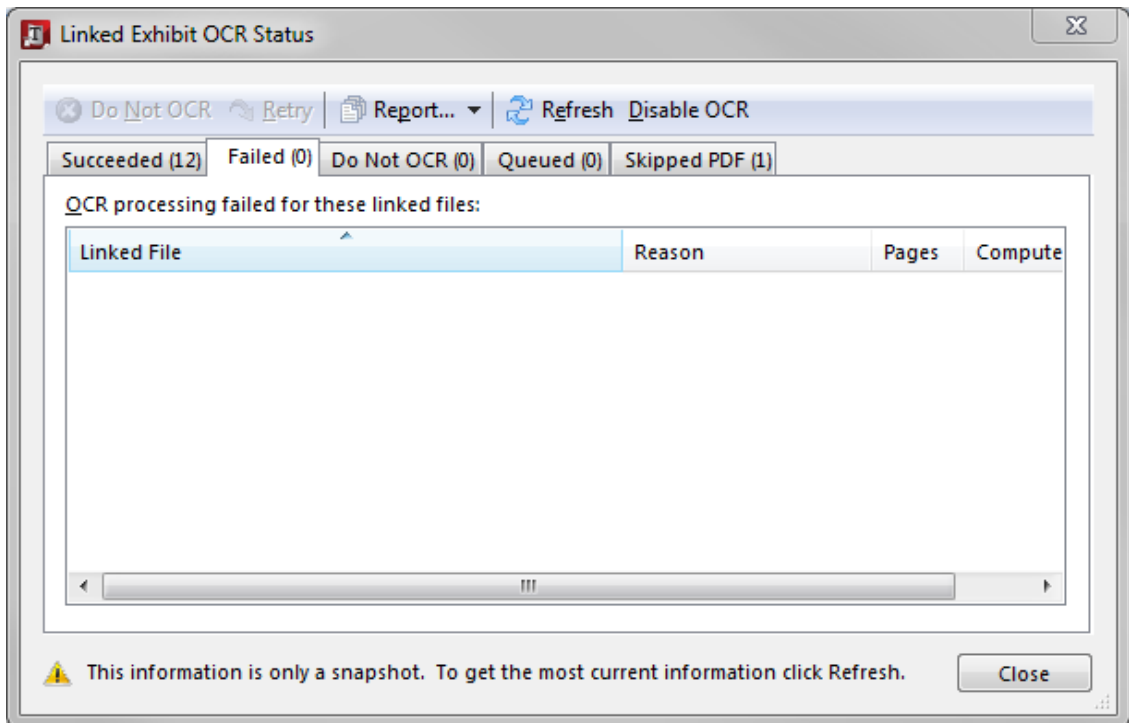
1. On the **Case Tools** ribbon, click **Case Index**.
2. On the submenu, click **Linked Exhibit OCR Status**.
3. In the **Linked Exhibit OCR Status** dialog box, click the **Succeeded** tab to review linked files that were successfully OCR processed.



You can sort the Linked File list in ascending (default) or descending order.

Linked files display an icon depicting its file type and the number of pages per file.

4. Click on the **Failed** tab to view any files that failed OCR processing.



Failed linked files display the reason code, the number of pages in the file, and the computer name where OCR processing occurred.

If two linked files have the same computer name, they are sorted first by the Linked File column, then by the Reason column.

You can sort each column in ascending (default) or descending order. You can also resize each column.

5. To try indexing a file again, select the file you want and click the **Retry** button.
6. In the message box, click **OK** to OCR process the file and update the case index.
7. Optional: Click on the **Do Not OCR** tab to view files that will not be in queue for OCR processing at this time.
8. Optional: Click on the **Queued** tab to view files that are still in queue for OCR processing or are being OCR processed at this time.
9. Optional: Click on the **Skipped PDF** tab to view files were not in queue for OCR processing, and the PDF was skipped.
10. Optional: Click the **Report** button to generate a report.

In the Save Report dialog box, validate/enter a file name for the report, and then click Save.

11. Click the **Refresh** button to ensure that the most current information displays for each tab.
12. Click **Close** when you are finished.

To reprocess skipped PDF files

1. On the **Case Tools** ribbon, navigate to **Case Index** and then click **Linked Exhibit OCR Status**.
2. In the **Linked Exhibit OCR Status** dialog box, click the **Skipped PDF** tab.
3. Select the documents you wish to reprocess and click on **Retry**.

To stop files from OCR processing


Large files or corrupt files can easily be removed from OCR processing in the Linked Document OCR Status dialog box. A large file (e.g., PDFs with a page that contains more than 200 characters of searchable text on top of a scanned image) may still display on the Queued tab because it takes too long to process. A corrupt file will display on the Failed tab because it cannot be OCR processed. You can mark these files as Do Not OCR so they will not be reindexed when rebuilding the case index.

1. On the **Case Tools** menu, click **Case Index**.
2. On the submenu, click **Linked Exhibit OCR Status**.
3. In the **Linked Exhibit OCR Status** dialog box, click the tab you want to view: **Succeeded**, **Failed**, or **Queued**.
4. Select the file(s) you want to omit from OCR processing and click the **Do Not OCR** button.

The file now displays on the Do Not OCR tab and will be skipped during OCR processing.

If a file already succeeded OCR processing and was then flagged as Do Not OCR, TextMap will automatically update the index, removing the text previously indexed for that image. Files flagged as Do Not OCR will not be reindexed when rebuilding the case index.

You will not be able to search the content of an image that you have chosen not to OCR process, but you can still view the linked image file.


 The OCR status for the file(s) you have selected may have changed since you last opened the Linked File OCR Status dialog box. If you select a file and click Do Not OCR, and the status has changed, CaseMap displays a message for you to refresh the dialog box to update it with current information. Click Yes. Once the refresh is complete, locate the file(s) again, and if necessary click Do Not OCR again.

5. Click **Close** when you are finished.

To print a Linked Document OCR Status report

1. On the **Case Tools** menu, click **Case Index**.
2. On the submenu, click **Linked Exhibit OCR Status**.
3. In the **Linked Exhibit OCR Status** dialog box, click the tab for which you want to save data: **Succeeded**, **Failed**, **Do Not OCR**, **Queued**, or **Skipped PDF**.
4. On the **Report** button, click the drop down arrow and select the report option you want: **Save Standard Report** or **Save Debug Report**.
5. In the **Save Report** dialog box, navigate to the folder where you want to save the report.
6. Click the **Save** button.

The file is saved as a .csv file in the folder you selected.

 When you click on the Report button, there is an option for Save Debug Report. This report option is for CaseMap Technical Support to use in resolving issues with a file that did not index properly.

Related Topics

[About OCR processing](#)

[Disabling OCR processing](#)

[Viewing linked exhibit index status](#)

Disabling OCR processing

TextMap performs OCR processing in the background while you are working and processes one image at a time. The OCR processing feature is automatically turned on (enabled) for you.

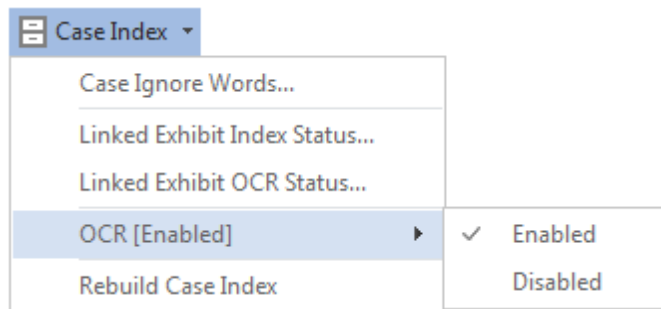
You can disable this feature on your computer. Disabling OCR processing ensures that TextMap will no longer attempt to OCR images linked to the cases you open on your computer. If you are sharing the case with other staff, those users will still be able OCR process images on their computer when they open TextMap. Once images are processed on other case users' computers, you will be able to access them in the case.

To disable OCR processing

1. On the **Case Tools** ribbon, click **Case Index**.

You can also right-click on the OCR icon  (located in the lower right corner of TextMap) when processing is enabled and click Disable OCR.


2. On the submenu, click **OCR [Enabled]**, and then click **Disabled**.



3. In the message box, click **Yes** to confirm the action.

The OCR icon  now displays its disabled status .

To enable OCR processing, simply right-click on the OCR icon and click Enable OCR. You can also click Enabled on the Case Index submenu.

-  You can also disable OCR processing by clicking the Disable OCR button in the Linked Document OCR Status dialog box. The button then displays as Enable OCR. A message stating that OCR processing is disabled will also display at the bottom of the dialog box.

Related Topics

- [About OCR Processing](#)
- [Viewing linked file OCR status](#)

Managing Links to Cases

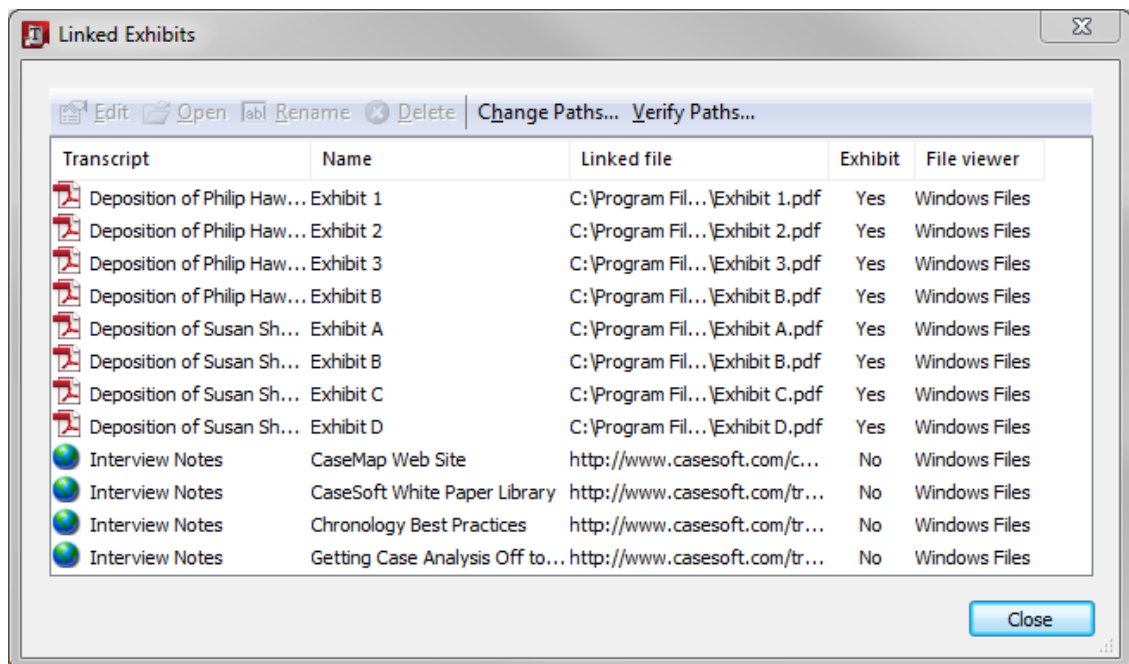
Changing exhibit file paths

Linked exhibits and other case files should be stored in a network folder so other case users can access them. You can change the file paths using the Change Path Wizard, which will change all matching paths to the new path so that links in the case will open specified documents.

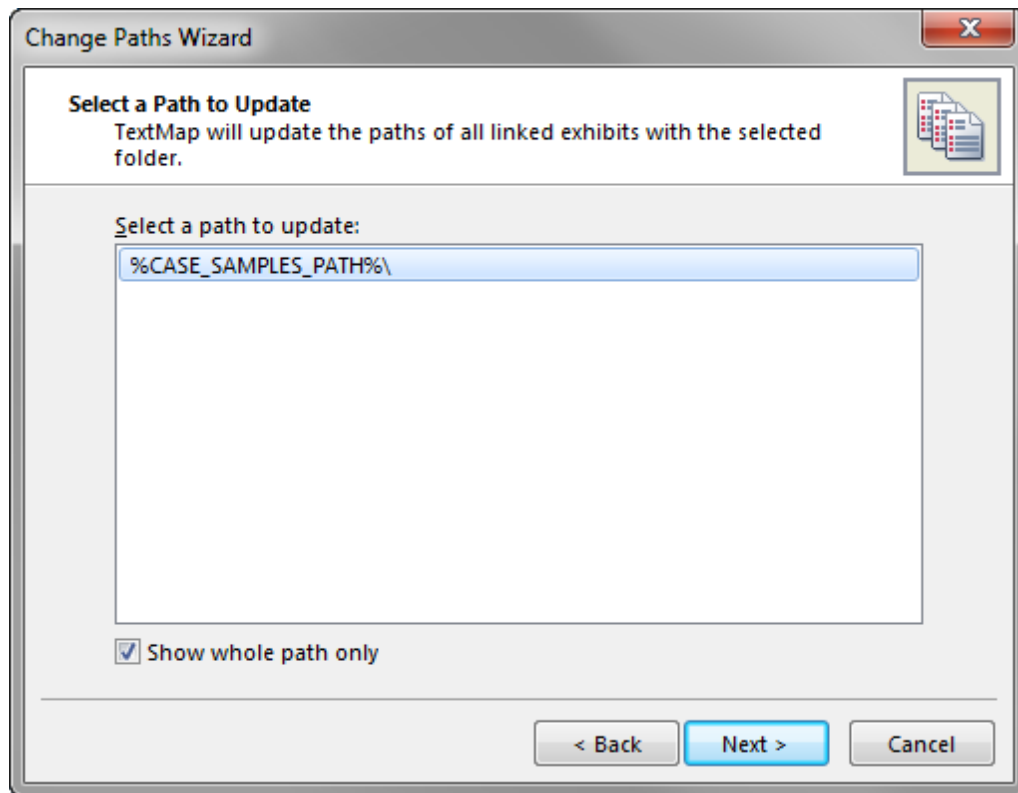
- ⚠ We recommend you make a backup copy of the case before making any global changes, like changing linked file paths. Once the process is completed, you cannot undo the changes without restoring a backup copy of the case.

To change exhibit file paths

1. On the **Case Tools** menu, click **Linked Exhibits**.
2. In the **Linked Exhibits** dialog box, click **Change Paths**.



3. On the **Change Paths Wizard's Welcome** page, click **Next**.
4. On the **Select a Path to Update** page, select the path you want to update.



Select the Show whole path only check box if you prefer to change the whole file path at once.

5. Click **Next** to continue.
6. On the **Enter a New Path** page, click **Browse** navigate to the folder where the files are now stored, then click **OK**.
7. On the **Enter a New Path** page, click **Next**.
8. On the **Completing the Change Paths Wizard** page, review the previous and new folder paths, then click **Finish**.
9. In the **Linked Documents** dialog box, click **Close**.

Related Topics

About exhibits
Linking exhibits to transcripts
Creating single hyperlinks in transcripts
[Changing the case exhibits path](#)

Changing the case exhibits path

Exhibit files and other case files should be stored in a network folder so other case users can access them.

For local cases, TextMap automatically imports exhibits files to a subfolder where the case file is stored. If you move the exhibits folder along with the case file, the imported exhibits link will still work. See [Changing exhibit file paths](#).

For SQL cases, you specify the network folder where you want to store exhibit files in the Case Properties dialog box. You must have permission granted in the CaseMap Admin Console to use this feature.

[To change the exhibits path folder for SQL cases](#)

1. On the **File** menu, click **Case Setup**, and then click **Case Properties** to open the **Case Properties** dialog box.

The current folder path for exhibits displays in the **Exhibits Path** box.

2. Click the **Modify** button to change the folder path.
3. In the **Browse for Folder** dialog box, navigate to the folder where you want to save exhibit files, then click **OK**.
4. Click **OK** to save your changes.

Related Topics

Entering case properties
Importing exhibit packages
[Changing exhibit file paths](#)

Managing File Viewers

About file viewers

TextMap allows you to add native applications as file viewers so you can view native files in the application in which they originate. The default viewer in TextMap is a Windows file viewer. You can add additional file viewers, such as Adobe Acrobat, so you can view linked PDF files in TextMap.

The File Viewers dialog box displays a listing of all programs that have been added to your licensed copy of TextMap. You can add as many file viewers as you need to view the files and documents linked to your case. Once a file viewer is set up in TextMap, you can view the source file in the native application. If other users want to view that same record file, they will need to set up the file viewer in TextMap too.

To view the file, select the transcript it is linked to and then click on the paperclip icon to launch the native application. The path to the native file is stored in the Linked Exhibits dialog box.

Related Topics

[Adding/changing file viewers](#)

[Setting up custom file viewers](#)

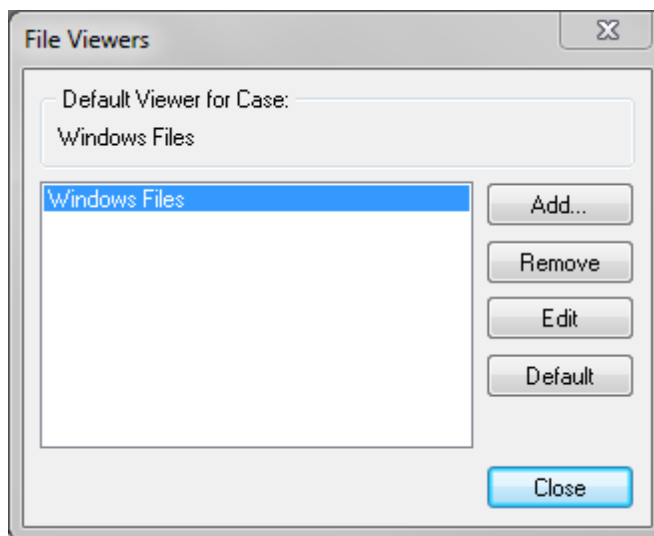
Adding/changing file viewers

The default file viewer in TextMap is Microsoft® Word. To find out if you have additional file viewers set up in TextMap, click on the Tools menu and click File Viewers. The File Viewers dialog box displays a listing of all programs that have been added to your licensed copy of TextMap. Here you can add, remove, and edit file viewers, as well as change the default viewer being used. Other users who want to view the same native source files need to ensure they have added necessary applications to the File Viewers dialog box too.

- ⚠ We recommend you make a backup copy of the case before making any global changes, like changing file viewers. Once the process is completed, you cannot undo the changes without restoring a backup copy of the case.

To add a file viewer

1. On the **Case Tools** ribbon, click **File Viewers**.
2. In the **File Viewers** dialog box, click the **Add** button.



3. In the **Select Viewer Type** dialog box, select the viewer you want from the **Viewer Type**

list, then click **OK**.


If the file viewer is not listed, select Custom, then click OK.

In the New File Viewer dialog box, click Browse to locate the file viewer you want to use, then click Open.

Click OK to continue.

4. In the **Select Image Database** dialog box, navigate to and select the program you want to use, then click **Open**.
5. In the **New File Viewer** dialog box, click **OK**.

The new file viewer is now listed in the File Viewers dialog box and you can now open the source files associated with this program.

 To set the new file viewer as the default viewer, click the Default button. In the message, click Yes.

6. Click **Close** to return to the case.

To remove a file viewer

1. On the **Case Tools** ribbon, click **File Viewers**.
2. In the **File Viewers** dialog box, select the viewer you want to delete.
3. Click the **Remove** button.
4. In the message box to confirm, click **Yes**.

The name of the selected viewer is now removed from the File Viewers dialog box.

5. Click **Close** to return to the case.

Related Topics

[About file viewers](#)

[Setting up custom file viewers](#)

Setting up custom file viewers

TextMap allows you to select from a variety of industry file viewers, or you can set up a custom file viewer too.

File viewers added to TextMap may be used by other team members as long as the application is installed on their machine. For DDE (dynamic data exchange) and Command Line viewers, the path to the viewer application's executable must be the same on the other users' computers.

Choose from the following custom file viewer types:

- Command Line is for applications controlled through command line parameters.
- DDE is for applications controlled through the Windows protocol called DDE (dynamic data exchange).
- Script is for applications controlled through ActiveX scripting and/or Windows OLE/COM protocols.

To set up custom file viewers

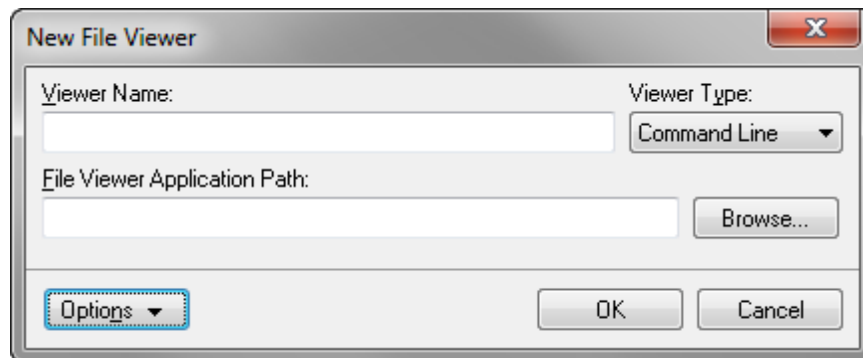
1. On the **Case Tools** ribbon, click **File Viewers**.
2. In the **File Viewers** dialog box, click the **Add** button.
3. In the **Select Viewer Type** dialog box, select **Custom** and then click **OK**.
4. In the **New File Viewer** dialog box, type the name you want to use to reference the viewer in the **Viewer Name** field.

Make the name as short and descriptive as possible.

5. In the **Viewer Type** listing, click the type of viewer: **Command Line, DDE, Script**.

For Command Line and DDE Viewers

For Command Line viewers, you must provide the file viewer application path.



Click Browse to locate the executable of the application you will use to view documents.

When you select the application's executable, the full path to the executable appears in quotes in the File Viewer Application Path field.

Type any applicable command line parameters after the full path to the application's executable. Use the replaceable parameter %1 to represent the Linked File value.

For DDE viewers

For DDE viewers, you must provide you must provide the file viewer application path and the DDE data required for TextMap to communicate with the file viewer application.

The image shows a 'New File Viewer' dialog box. It has a title bar with a close button (X). The dialog contains the following fields and controls:

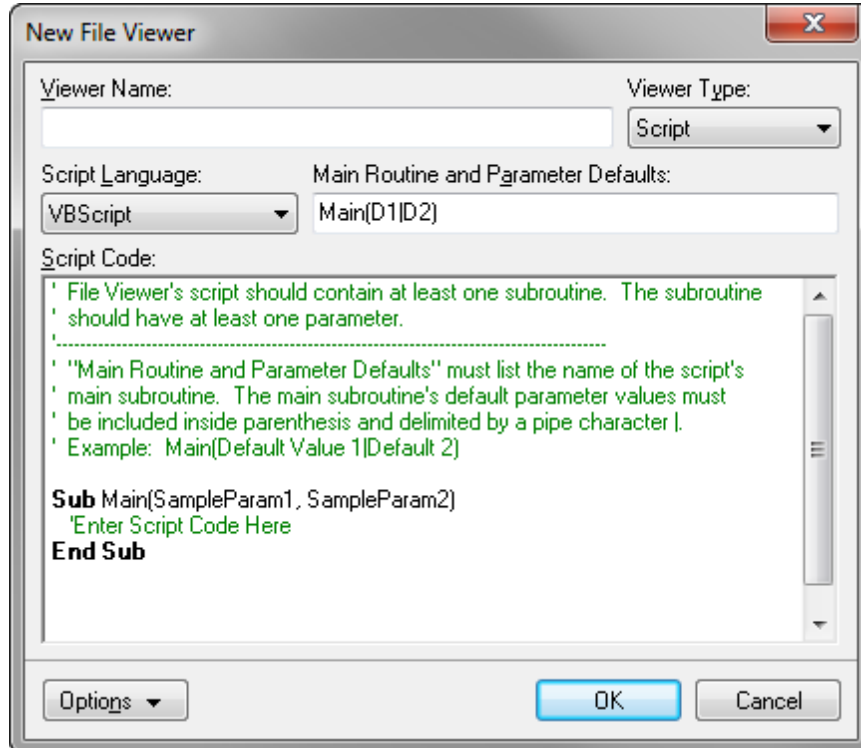
- Viewer Name:** A text input field.
- Viewer Type:** A dropdown menu currently set to 'DDE'.
- File Viewer Application Path:** A text input field with a 'Browse...' button to its right.
- DDE Data:** A section header.
- Application/Service:** A text input field.
- Topic:** A text input field.
- DDE Message:** A text area with a vertical scrollbar.
- Options:** A dropdown menu.
- OK:** A blue button.
- Cancel:** A button.

1. In the **Application/Service** field, type the DDE application/service parameter value.
2. In the **Topic** field, type the DDE topic parameter value.
3. In the **DDE Message** field, type the DDE command(s) to open the viewer and display a document.

Use the %1 replaceable parameter to represent the document Linked File value. The %1 is replaced with the selected record's Linked File value when the command is carried out.

For Script viewers

For Script viewers you must provide the following information:



1. In the **Script Language** listing, click the scripting language used by the script code: **VBScript, JScript, JavaScript**.

2. In the **Main Routine** and **Parameter Defaults** field, type the name of the script code's main subroutine.

A description of the Parameter Defaults is provided in the default script code.

3. In the **Script Code** box, type the script code to communicate with the file viewer.

Please note the %1 replaceable parameter is not used by Script file viewers. The value of the selected record's Linked File field is passed as parameters into the script's main subroutine. Multiple parameter values must be delimited by the pipe character in the Linked File field.

6. Click **OK** to save the new file viewer in the case.

The new custom file viewer now displays in the File Viewers dialog box.

7. Click **Close** when you are finished.

To set a default file viewer

1. On the **Tools** menu, click **File Viewers**.
2. In the **File Viewers** dialog box, select the viewer you want assigned as a default viewer.
3. Click the **Default** button.
4. In the message box to confirm, click **Yes**.

The name of the selected viewer now displays in the Default Viewer for Cases area of the File Viewers dialog box.

Related Topics

[About file viewers](#)

[Adding/changing file viewers](#)

Managing Case Tools and Options

About case tools

TextMap case tools are utilities that help make the process of transcript review and reporting easier because they are built into the program. Many of these tools include wizards that help guide you through process steps.

[To review a list of case tools](#)

Reference the Case Tools table to learn about each case tool and find links to procedural topics.

Case Tools	
Tool	Description
Case Issues	This tool menu item opens the Case Issues dialog box where you can view, add, delete, organize, and import case issues. For more information see, About case issues .
Exhibit Autolink Aliases	This tool menu item allows you to configure aliases on a per-case level to automatically find links within a transcript. For more information, see Creating exhibit autolink aliases .
Linked Exhibits	This tool menu item displays the Linked Exhibits dialog box where you can edit, open, rename, delete, and change and verify linked exhibit file paths. For more information, see Editing exhibits , Verifying linked files , and Changing exhibit file paths .
Case Index	This tool menu item opens a submenu where you can view case ignore words, track linked exhibit indexing and OCR status, and enable/disable OCR processing, and rebuild the

Case Tools	
Tool	Description
	<p>case index.</p> <p>For more information, see Viewing linked exhibit index status, Rebuilding the case index, Modifying ignore words, Viewing linked exhibit OCR status, and Disabling OCR processing.</p>
File Viewers	<p>This tool allows you to add, edit, or delete file viewers. You can also set a file viewer as the default.</p> <p>For more information, see About file viewers.</p>
Case Optimizer	<p>This utility defragments your case file to remove unused disk space and increase speed.</p> <p>For more information, see Optimizing case files.</p>
Case Staff	<p>This feature allows you to add and delete case users.</p> <p>For more information, see Managing case staff and Adding users to cases.</p>
Change Case Password	<p>This tool allows you to change the password for local cases. SQL case passwords are set in the CaseMap Admin Console.</p> <p>For more information, see Setting/changing case passwords.</p>
Realtime	<p>This tool launches the CaseViewNet software that is installed (optionally) when you install TextMap.</p> <p>For more information, see About CaseViewNet.</p>
Full Service Expert Search	<p>This tool allows you to access the LexisNexis Expert Research On-Demand web site.</p> <p>For more information, click here.</p>
Customize	<p>The Customize dialog box allows you to change CaseMap toolbar, commands, and menu settings.</p> <p>For more information, see Changing toolbar buttons and settings.</p>
Options	<p>The Options dialog box contains several tabs for you to customize case options.</p> <p>For more information, see Changing case options.</p>

Related Topics

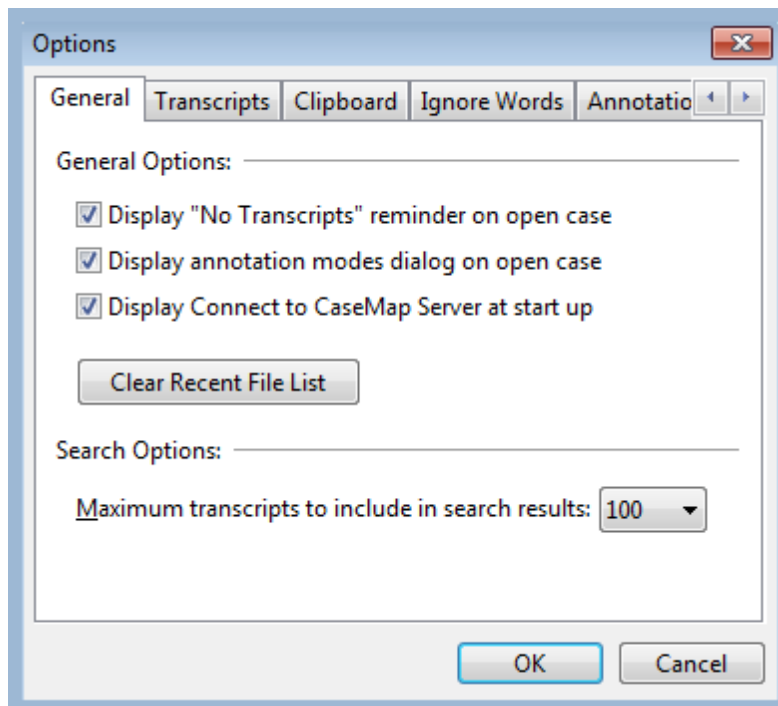
[Changing case options](#)

Changing case options

Once your case is created, you can customize many of TextMap's features and standardize them according to any internal guidelines, case needs, or user preferences.

[To change case options](#)

1. On the **File** menu, click **Options**.



2. Select the tab you need to adjust various custom settings.
See the Case Options table below for details regarding each options tab.
3. Click **OK** to save any changes.

[To reference a list of case options](#)

The following table provides a list of case options settings and their descriptions.

Case Options	
Tab	Settings
General	Select/clear whether to display a "No Transcripts" message reminder for an open case.
	Select/clear whether to display the Annotation Modes dialog box when opening a case. For more information, see Switch annotation modes to save time.
	Select/clear whether to connect to CaseMap Server each time you open TextMap.
	Clear the case list of those recently opened in TextMap. This list displays in the under Open a Local Case in the Getting Started pane. You can also clear one or all cases from the list by right-clicking on one of the cases and clicking Remove From List or Remove All From List. For more information, see About the Getting Started pane.
	Select the maximum number of transcripts to include in search results. The default setting is 100 transcripts.
Transcripts	Select/clear whether to display the transcript date and time in the Transcripts pane. For more information, Sorting transcripts.
	Select/clear the Show filter box for "X" or more transcripts check box to enable/disable the Filter Transcripts by Name box display in the Transcripts pane. Adjust the minimum number of transcripts in the case before the Filter Transcripts by Name box automatically displays in the Transcripts pane when this option is selected. The default settings is 30 transcripts.
	Select/clear whether to display the page number in the margin in the Transcript window.
Clipboard	Select/clear whether to include citation when copying and pasting transcript text. For more information, Copying data.
	Select format to set the formatting preference for copied transcript text.
	Select the position to place the transcript citation After Transcript Text or Before Transcript Text.
Ignore Words	Add and delete ignore words for the current, local case. Import and export the ignore word list. Once ignore words are added or deleted, rebuild the case index.

Case Options	
Tab	Settings
	For more information, see About the case index and Modifying ignore words .
Annotations	Adjust the default setting for TextMap's Annotation Mode. The default mode is Manual (Auto Off). For more information, see Switch annotation modes to save time .
	Select/clear whether to include page/line numbers when using the Send to CaseMap tool to send text to CaseMap. The default setting is disabled.
	Select/clear whether to send an annotation note as a new fact text when using the Send to CaseMap tool. The default setting is enabled.
Media Files	Reference or change the drive that TextMap searches for video file paths. TextMap can read video files from any location. It searches first for videos that are imported into the case. For more information, see Changing video file paths .
	Select/clear whether to search the entire disc on CDs or DVDs.
Media Export	Select/clear whether to use the FFmpeg encoder for exporting media clips. For more information, see Exporting video clips .
File Locations	Reference the directory location of case files, replicas, export and import files, linked files, and video clips.
	Modify the directory location of case files, replicas, export and import files, linked files, and video clips. For more information, see Managing/changing file locations .
CaseMap Servers	View a listing of all CaseMap Servers registered in CaseMap. Each server's name and URL displays. You can add, edit, and remove servers here. For more information, see Registering the CaseMap Server in TextMap .
Accessibility	Select/clear whether to use the standard Windows menu for the main menu bar.

Related Topics

[About case tools](#)

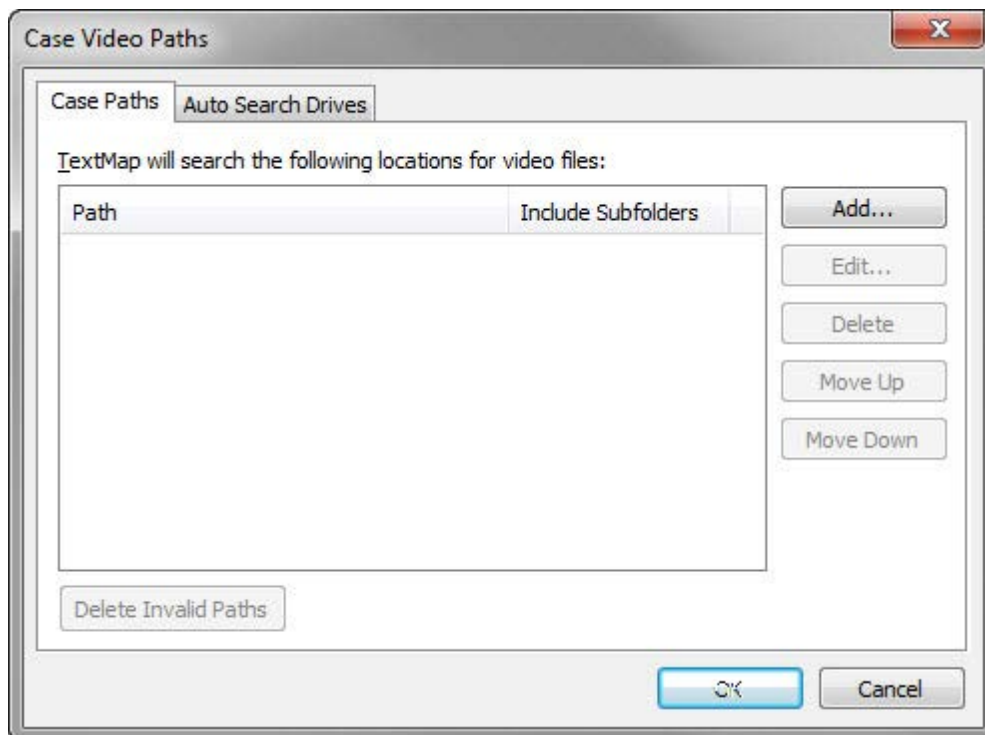
Managing Videos

Changing video file paths

The video path is where TextMap looks for video files. The Case Video Paths dialog box allows you to add additional file paths to search other locations on your system or network where videos might be stored.

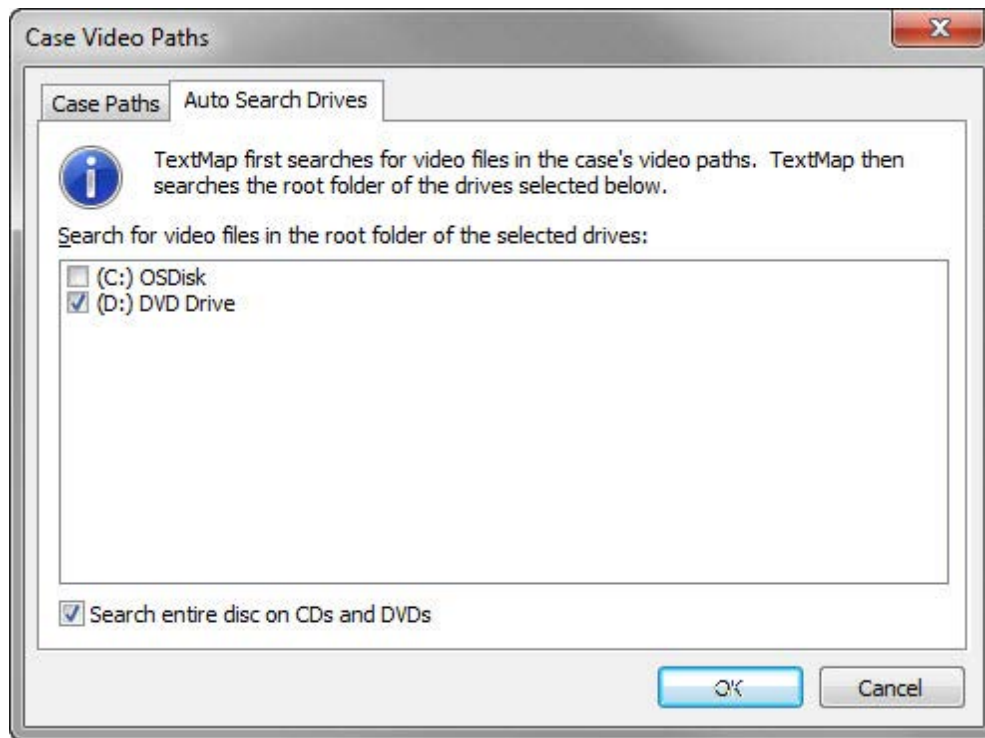
To add or change video paths

1. On the **File** menu, click **Case Setup**, and then click **Case Properties**.
2. In the **Case Properties** dialog box, click **Video Paths**.
3. On the **Case Video Paths** tab, click **Add** to add another location for TextMap to search.



You can organize this list and edit it as needed.

4. On the **Auto Search Drives** tab, select or clear check boxes for drives you want to search for video files.



The DVD Drive and Search entire disc on CDs and DVDs check boxes are selected by default.

5. Click **OK** to save any changes.

Related Topics

About videos

Changing search options for videos

Managing File Locations

Managing/changing file locations

TextMap keeps track of where you store your cases, including the case file itself, replicas, export and import files, linked files, and video clips. You can check and modify the locations of these files. And you can choose to automatically create new cases in a designated Case Files folder.

[☰ To manage/change file locations](#)

1. On the **File** menu, click **Options**.
2. In the **Options** dialog box, click the **File Locations** tab.
Review the default file locations for all case file types listed.
3. Select the file type you want to modify in the file location box.
4. Click the **Modify** button to change the folder location.
5. In the **Browse for Folder** dialog box, select the folder where you want to store these files, then click **OK**.
Check the Make New Folder if you want to create a folder in which to save the files.
The file path location is now updated to the folder you selected.
6. Click **OK** to save your changes.

Related Topics

- [Changing linked file paths](#)
- [Changing exhibit file paths](#)

Managing Accessibility Options

Changing accessibility options

TextMap accessibility options allows you to use a standard Windows menu for the main menu bar instead of ribbons.

To change accessibility options

1. On the **File** menu, click **Options**.
2. Click the **Accessibility** tab, and in the dialog box, select the check box to enable the option:
 - Use standard Windows menu for main menu bar
3. Click **OK** to save your changes.

Related Topics

- [About case tools](#)

Changing toolbar buttons and settings

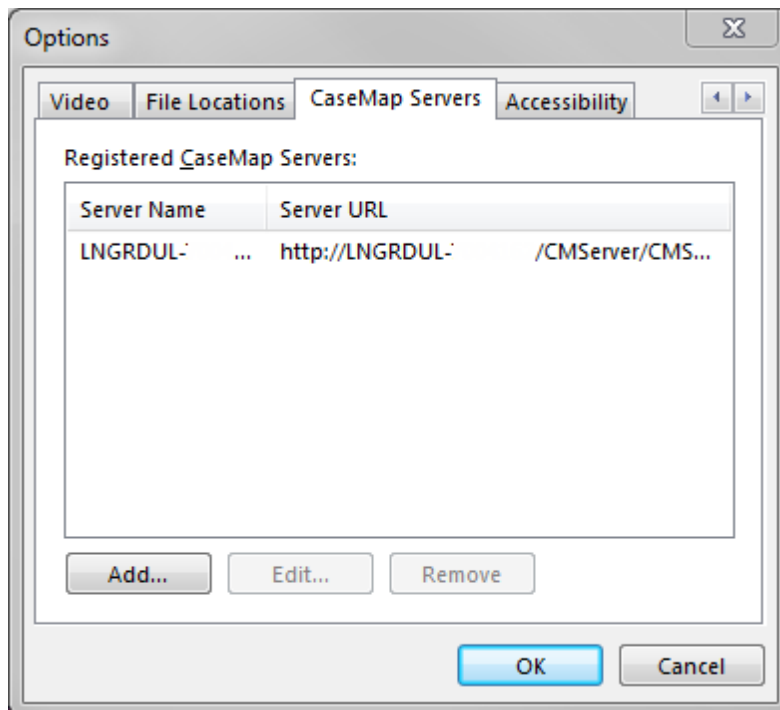
Managing CaseMap Server

Registering the CaseMap Server

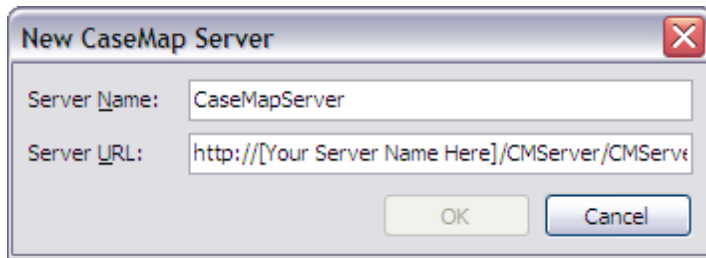
If you are using TextMap with CaseMap Server and did not register a server during TextMap installation, you will need to register a CaseMap Server in the client application in order for users to access SQL cases in TextMap.

To register a CaseMap Server

1. Launch **TextMap**.
2. On the **File** menu, click **Options**.
3. In the **Options** dialog box, click the **CaseMap Servers** tab.



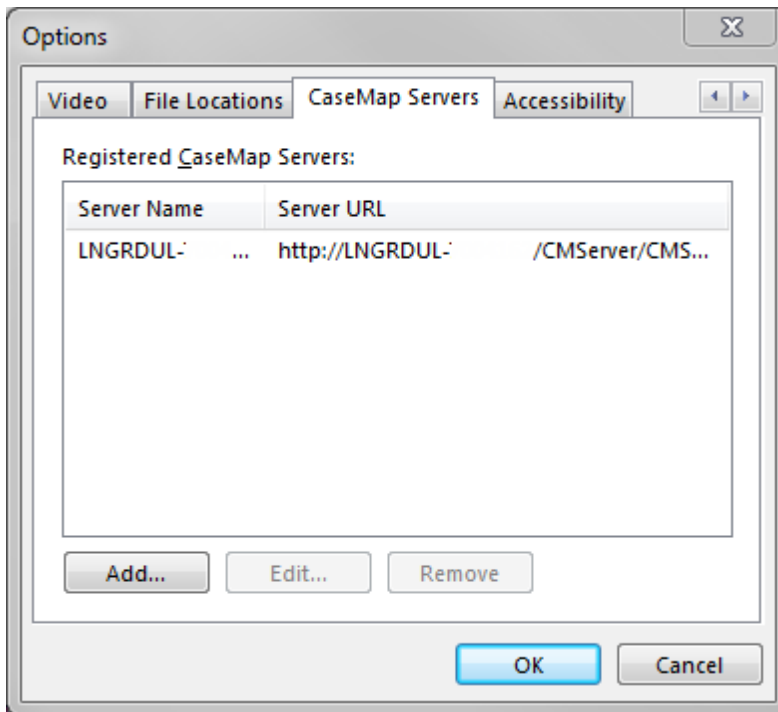
4. Click the **Add** button.
5. In the **New TextMap Server** dialog box, type in the client server address in the **Server Name** field.



6. In the **Server URL** field, type in the path to the server, then click **OK**.
For example: *http://[Your Server Name Here]/CMServer/CMServerClient.svc.*
7. Click **OK** when you are finished.
The server you registered now displays in the Registered CaseMap Servers box.

To edit a CaseMap Server in TextMap

1. Launch **TextMap**.
2. On the **File** menu, click **Options**.



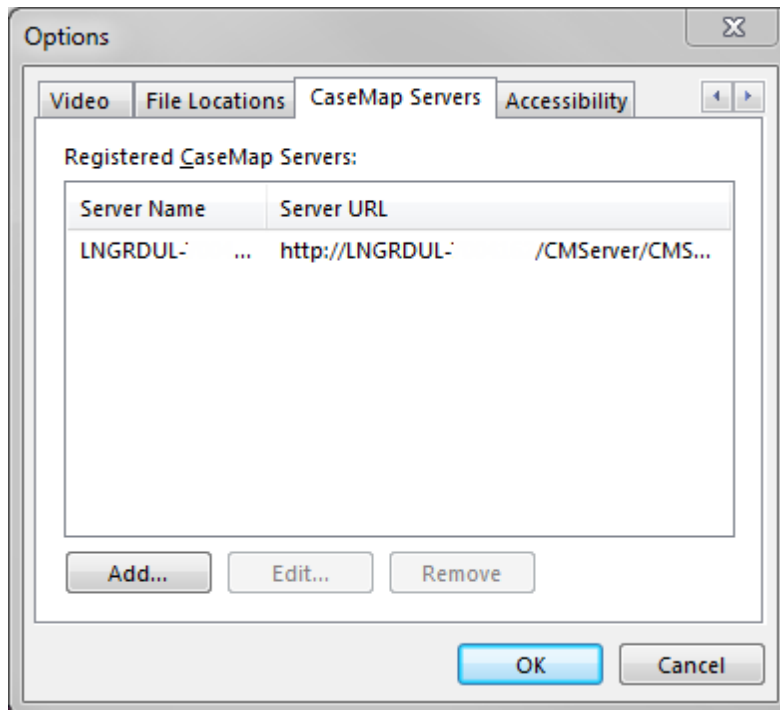
3. In the **Options** dialog box, click the **CaseMap Servers** tab.
4. In the **Registered CaseMap Servers** box, select the server you want to edit.
5. Click the **Edit** button.
6. In the **Edit CaseMap Server** dialog box, modify the server name or server URL, then click **OK**.

The changes now display in the Registered CaseMap Servers box.

7. Click **OK** to save your changes.

To remove a registered server in CaseMap

1. Launch **TextMap**.
2. On the **File** menu, click **Options**.
3. In the **Options** dialog box, click the **CaseMap Servers** tab.



4. In the **Registered CaseMap Servers** box, select the server you want to remove.
5. Click the **Remove** button.

The selected server no longer displays in the Registered CaseMap Servers box.

6. Click **OK** to save your changes.

To disable the Connect to CaseMap Server dialog box

You have the option to disable the Connect to CaseMap Server dialog box when you launch TextMap. This feature is turned on by default.

1. On the **File** menu, click **Options**.
2. On the **General** tab, clear the **Display Connect to CaseMap Server at start up** check box.
3. Click **OK**.

Related Topics

Installing TextMap

[CaseMap Server Answer Center](#)

Index

- A -

about

- case options, tools 42
- file viewers 36
- OCR processing 27
- replicating 6
- synchronizing 6

adding

- file viewers 37

- C -

CaseMap Server

- registering in TextMap 50

cases 24

- changing exhibit file paths 34, 36
- creating replicas 9
- file locations 48
- index 19
- managing case staff 5
- modifying ignore words 24
- rebuilding the index 23
- rebuilding case index 24
- replicas, offline 18
- replicating, about 6
- synchronizing 17
- synchronizing, about 6

changing

- accessibility options 49
- case exhibits path 36
- exhibit file paths 34
- file locations 48
- file viewers 37
- video file paths 47

creating

- replica cases 9

- D -

disabling

- CaseMap Server 50
- OCR processing 33

- E -

editing

- CaseMap Server 50

exhibits

- changing file paths 34, 36
- OCR processing status 28

exporting

- ignore words list 24

- F -

file paths

- changing case exhibits path 36
- changing exhibits file paths 34
- changing video paths 47

file viewers

- about 36
- adding 37
- changing 37
- removing 37
- setting default 38
- setting up custom 38

files

- locations 48
- viewing indexing status 21

- I -

ignore words

- exporting 24
- importing 24
- modifying 24

importing

- ignore words list 24

index

- case 19
- exporting ignore words 24
- importing ignore words 24
- modifying ignore words 24
- rebuilding 23

indexing

- rebuilding case index 23
- transcripts 19
- viewing linked exhibit status 21

- L -

linked exhibits
 changing exhibit file paths 34
 disabling OCR processing 33
 Linked File Index Status report 21
 OCR processing status 28
 OCR processing, about 27
 viewing indexing status 21

- M -

managing
 accessibility options 49
 case options 44
 case staff 5
 case tools 42
 CaseMap Server 50
 default file viewers 38
 exhibit file paths 34, 36
 file locations 48
 file viewers 36
 file viewers, custom 38
 OCR processing 27
 video file paths 47
 modifying
 ignore words 24

- O -

OCR processing
 about 27
 disabling 33
 Linked Document OCR Status report 28
 stop processing 28
 viewing linked file status 28
 offline
 taking videos offline 18
 options
 about 42
 accessibility options 49
 case options table 44
 case, managing 42
 changing, case 44

- R -

rebuilding
 case index 23
 registering
 CaseMap Server in TextMap 50
 removing
 file viewers 37
 registered CaseMap Servers 50
 replicas
 about creating 6
 creating 9
 rebuilding case index 23
 taking video offline 18
 replicating
 about 6
 reports
 Linked Document OCR Status 28
 Linked File Index Status 21

- S -

searching
 modifying ignore words 24
 SQL cases
 changing exhibit file paths 36
 synchronizing
 about 6
 cases 17

- T -

TextMap
 taking videos offline 18
 tools
 case tools table 42
 transcripts
 exhibit files, managing 34
 indexing 19

- U -

users
 managing case staff 5

- V -

videos

- changing file paths 47
- taking offline 18