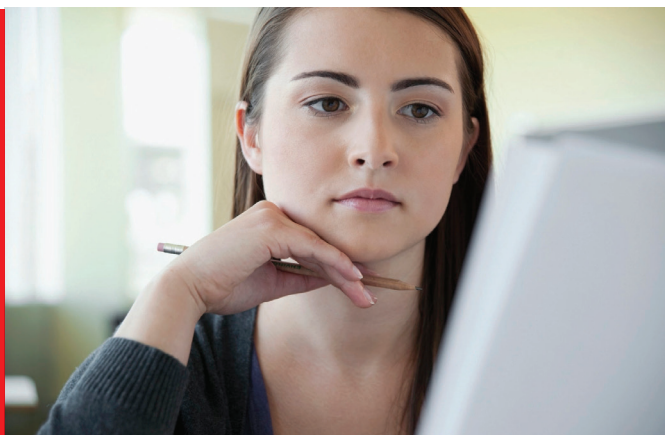


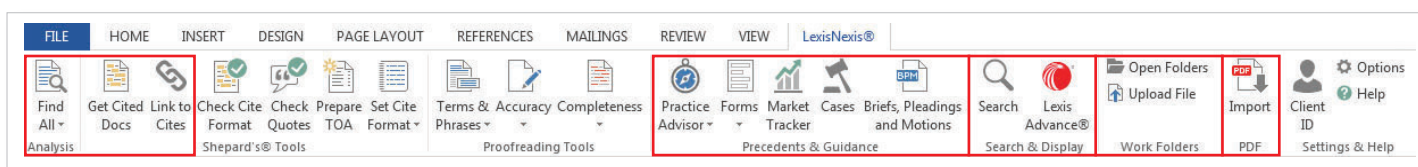


THREE TOOLS IN ONE

HELP YOU EXPEDITE THE RESEARCH,
EDITING AND CITE PROCESS



Open your Word document* in Lexis® for Microsoft Office® to access the features below.



LEXIS® FOR MICROSOFT OFFICE® RESEARCH TOOL

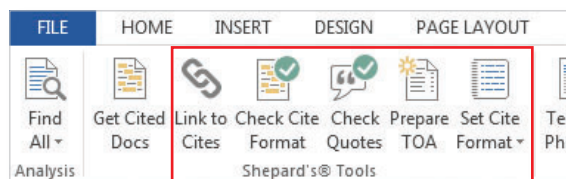
- Find All:** Locate legal entities, terms of art, citations and more to gain insight more quickly.
- Get Cited Docs:** Validate sources by accessing *Shepard's*® Citations Service from within the context of your document. **Get Cited Docs** creates hyperlinks to legal citations found in your document. See *Shepard's* Signal™ indicators in your document and cited documents to ensure citations are accurate and up to date, and easily find additional on-point authority.
- Link to Cites:** Citations in your Word document will hyperlink directly to content in Lexis Advance.
- Precedents:** Leverage relevant cases, briefs, motions and pleadings.
- Guidance:** Find practical guidance from experienced practitioners.
- Search & Display:** Conduct research without leaving your document.
- Open Folders & Upload File:** Easily save items to a Lexis Advance work folder.

IT'S ALSO A CITATION CHECKING AND FORMATTING TOOL

- Set and Check Cite Format:** Efficiently match the format you specify.
- Check Quotes:** Quickly validate against source documents.
- Prepare a Table of Authorities:** Organize with fast, flexible options.
- Save time as you ensure style compliance.

Use **Set Cite Format** to select citation style manuals, including *The Bluebook*®, California and New York.

Use **Check Cite Format** for clear status icons to see at a glance which citations are already correct, may need correcting or are not recognized. Short citations (including id. citations) are corrected at the same time as their parent citations.



Find the Lexis for Microsoft Office download in **Resources**, under **Apps & Tools** at:

LEXISNEXIS.COM/LAWSCHOOL
NEED HELP? CALL 800-45-LEXIS