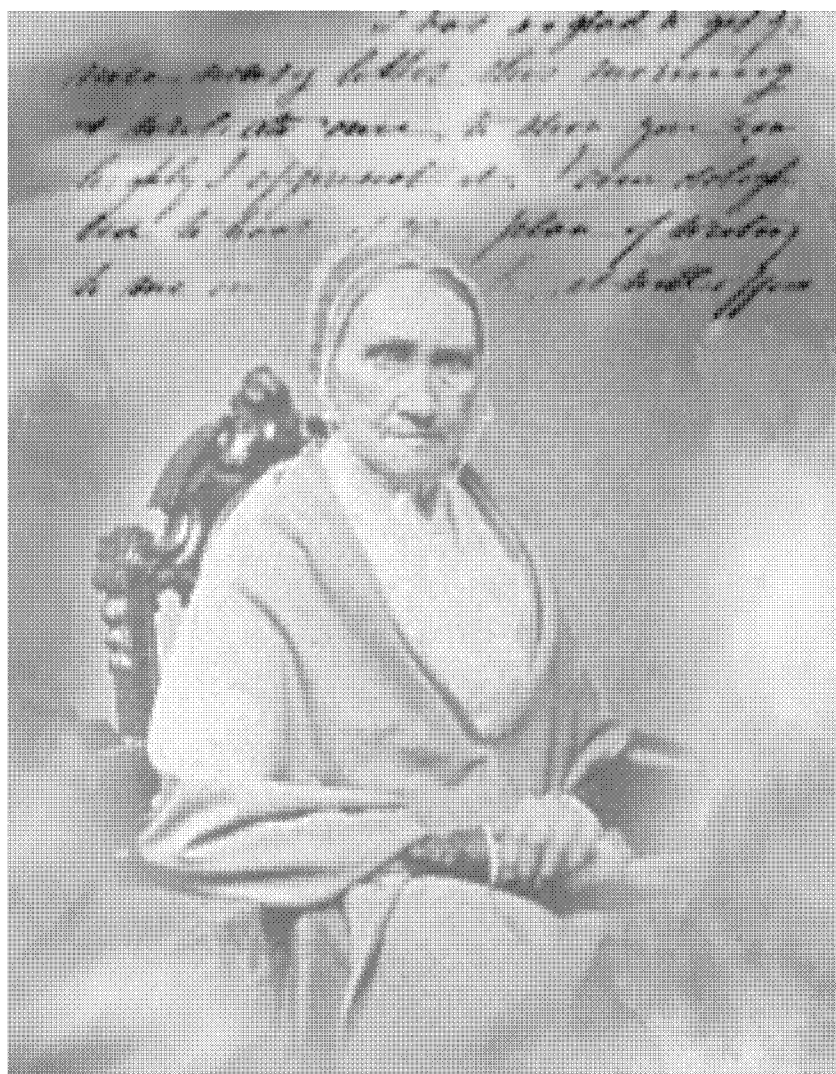


A Guide to the Microfilm Edition of

New England Women and Their Families in the 18th and 19th Centuries:

**Series B: Manuscript Collections from the
Newport Historical Society**

Part 1: Williams and Robinson Collections



A UPA Collection

from

 LexisNexis™

Cover: Photo of Ruth Hadwin Williams. Courtesy of the Newport Historical Society.

Research Collections in Women's Studies
General Editors: Anne Firor Scott and William H. Chafe

**New England Women and
Their Families in the 18th and
19th Centuries: Personal
Papers, Letters, and Diaries**

**Series B: Manuscript Collections from the
Newport Historical Society**

Part 1: Williams and Robinson Collections

**Consulting Editor
Ellen K. Rothman**

**Project Coordinator
Randolph Boehm**

**Guide Compiled by
Ann W. Parks and Tami Y. Chin**

A UPA Collection from



4520 East-West Highway • Bethesda, MD 20814-3389

Library of Congress Cataloging-in-Publication Data

New England women and their families in the 18th and 19th centuries—personal papers, letters, and diaries. Series B, Manuscript collections from the Newport Historical Society [microform] / consulting editor, Ellen K. Rothman ; project coordinator, Randolph Boehm. microfilm reels

Contents: pt. 1. Williams and Robinson collections

Accompanied by a printed guide entitled: A guide to the microfilm edition of New England women and their families in the 18th and 19th centuries—personal papers, letters, and diaries. Series B, Manuscript collections from the Newport Historical Society.

ISBN 1-55655-816-3

1. Women—Rhode Island—History—18th century—Sources. 2. Women—Rhode Island—History—19th century—Sources. 3. Women—New York—History—19th century—Sources. 4. Robinson family—Archives. 5. Williams family—Archives. I. Title: New England women and their families in the 18th and 19th centuries. II. Title: Manuscript collections from the Newport Historical Society. III. Rothman, Ellen K., 1950– . IV. Boehm, Randolph. V. Newport Historical Society. VI. Title: Guide to the microfilm edition of New England women and their families in the 18th and 19th centuries—personal papers, letters, and diaries. Series B, Manuscript collections from the Newport Historical Society.

HQ1438

305.4'0973—dc21

00-043539

CIP

TABLE OF CONTENTS

Scope and Content Note	v
Note on Sources	vii
Editorial Note	vii
Reel Index	
Reels 1–18	
Robinson Papers	1
Reel 19	
Robinson Papers cont.	39
Williams Collection	39
Reels 20–22	
Williams Collection cont.	41
Principal Correspondents Index	47
Subject Index	55

SCOPE AND CONTENT NOTE

This edition of *New England Women and Their Families in the 18th and 19th Centuries* consists of the Robinson Papers and the Williams Collection, microfilmed from the holdings of the Newport Historical Society in Newport, Rhode Island. These two collections document several generations of Rhode Island Quaker families. The collections consist of correspondence, diaries, genealogical materials, and business and financial records.

The Robinson Papers span from the 1720s to the 1940s and document the religious, family, political, and business interests of the Robinson family. A significant portion of this collection consists of correspondence between family members. The letters from parents to children, from children to parents, and among siblings provide insight into the relationships among family members. These letters discuss important family matters, as well as everyday concerns, and cover such topics as health concerns, education of children, and social events, including courtship and marriage. Some letters also refer to national political events and issues such as the American Revolution, slavery, and the Civil War. The collection also includes a significant amount of correspondence with relatives in Philadelphia, Pennsylvania, and New Bedford, Massachusetts. Relatives living in Philadelphia were the Wharton, Fisher, Morton, and Smith families. Relatives in New Bedford were the Rotch and Rodman families. Prominent women correspondents in this collection include Amy Robinson Bowne, Esther Fisher Wharton Smith, Esther Morton Smith, Esther Robinson Morton, Mary Robinson Morton, Abigail Robinson, Sarah Robinson, Amy Thurston, and Anna Wharton Wood Smith. The Robinson Papers begin on Reel 1 and continue through to Frame 0263 of Reel 19.

The Williams Collection spans from 1743 to 1909, with most items dating from the nineteenth century. Obadiah Williams, the patriarch of the Williams family, moved to Newport from New Bedford. Fearful of a British attack on Newport during the War of 1812, the family moved to upstate New York. The correspondence in this collection reveals the importance of women's work in the farm economy and within the Quaker community. Several letters also discuss the schism between the Orthodox and Hicksite Quakers that developed in the late 1820s. Prominent correspondents are Catharine Williams Carman, Ruth Hadwin Williams, Dorcas B. Purdie, Henry Williams, John Williams, Obadiah Williams, and Samuel Williams.

Additional collections pertaining to Newport women and their families can be found in *New England Women and Their Families in the 18th and 19th Centuries: Personal Papers, Letters, and Diaries; Series B: Selections from the Newport Historical Society, Part 2: Selected Collections*. UPA's *New England Women and their Families in the 18th and 19th Centuries* also consists of collections microfilmed from the holdings of the American Antiquarian Society (Series A) and the Rhode Island Historical Society (Series C). Other collections from the Newport Historical Society microfilmed by UPA are available in *Papers of the American Slave Trade, Series B: Selections from the Newport Historical Society*.

NOTE ON SOURCES

The manuscript collections reproduced for this edition were microfilmed from the holdings of the Newport Historical Society, Newport, Rhode Island. The descriptions of the collections in the Scope and Content Note of this user guide are adapted from the finding aids and collection inventories compiled by the Newport Historical Society.

EDITORIAL NOTE

The collections microfilmed in this edition were selected under criteria established by series Consulting Editor Ellen K. Rothman.

REEL INDEX

The following is a listing of the folders comprising *New England Women and Their Families in the 18th and 19th Centuries: Series B: Manuscript Collections from the Newport Historical Society, Part 1: Williams and Robinson Collections*. The four-digit number on the far left is the frame at which a particular file folder begins. Substantive issues are highlighted under the heading *Major Topics*. Prominent correspondents are highlighted under the heading *Principal Correspondents*.

Reel 1

Frame No.

Robinson Papers

- 0001 **Index for the Robinson Papers.** 54 frames.
- 0055 **Wanton Genealogy by Anna Wharton Smith Wood, [1938–1939 and Undated].** 61 frames.
- 0116 **Wood, Anna Wharton Smith—File of Genealogical Notes, [1889, 1945, and Undated].** 63 frames.
- 0179 **Wood, Anna Wharton Smith, [1941 and Undated].** 5 frames.
Major Topic: Ebenezer and Thomas Richardson.
Principal Correspondent: Herbert Olin Brigham.
- 0184 **Wanton Genealogy, [Undated].** 9 frames.
- 0193 **Wood, Anna Wharton Smith, [1783].** 6 frames.
Major Topics: American Revolution; artillery officer; women.
Principal Correspondent: William T. Robinson.
- 0199 **Wood, Anna Wharton Smith, [1755–1779, 1943, and Undated].** 30 frames.
Major Topics: Newport, Rhode Island, business and industry; Thomas Richardson; Caleb Heathcote; wedding; Robinson family.
Principal Correspondents: Thomas Robinson; Samuel Bowne; Henry Haydock; Joseph Delaplaine; Walter Franklin; Herbert Olin Brigham; Caleb Heathcote; Benjamin Newberry; Thomas Richardson; Amy Richardson; Abigail Robinson; Rowland Robinson.
- 0229 **Wood, Anna Wharton Smith, [Undated].** 11 frames.
Major Topics: Furniture; Robinson family; Borden family.
- 0240 **Wood Family Letters, 1945–1946.** 10 frames.
- 0250 **Wanton Genealogy, [1938–1940 and Undated].** 24 frames.
Major Topic: Edward Wanton.
Principal Correspondent: Anna Wharton Wood.
- 0274 **Aplin, Joseph and Polly Robinson, 1783.** 2 frames.
- 0276 **Chapin, Howard Millar—Calendrier Francais, [1781].** 7 frames.
Major Topic: French fleet in North American waters during American Revolution.
- 0283 **Law Academy of Philadelphia—In Memory of William Wharton Smith, 1892.** 25 frames.
Major Topic: Lawyers and legal services.
- 0308 **Thomas Richardson—Letters to Polly Robinson, 1783.** 8 frames.
Principal Correspondents: Thomas Richardson; Polly Robinson.

Frame No.

- 0316 **Rodman, Julia A., [1926].** 10 frames.
Major Topic: Samuel and Elizabeth Rodman.
- 0326 **Smith Genealogy, [1939 and Undated].** 10 frames.
Major Topic: Fisk program to train African Americans.
Principal Correspondent: Anna Wharton Wood.
- 0336 **Quaker Exile—Added to Collection 9/10/93, [1777 and Undated].** 26 frames.
Major Topic: Quakers.
Principal Correspondent: Samuel R. Fisher.
- 0362 **Bowne, Amy R[obinson]—Letters to Mary Robinson Morton, 1795.** 10 frames.
Major Topic: Diseases and disorders.
Principal Correspondents: Amy Robinson Bowne; Mary Robinson Morton.
- 0372 **Bowne, Amy Robinson—Letters to Mary Robinson Morton, 1796.** 20 frames.
Major Topics: Robinson family; diseases and disorders.
Principal Correspondents: Amy Robinson Bowne; Mary Robinson Morton.
- 0392 **Bowne, Amy Robinson—Letters to Mary Robinson Morton (sister), 1797–1798.** 8 frames.
Major Topics: Diseases and disorders; death of child.
Principal Correspondents: Amy Robinson Bowne; Mary Robinson Morton.
- 0400 **Bowne, Amy Robinson—Letters to Mary R. Morton, 1799.** 4 frames.
Major Topics: Diseases and disorders; health conditions.
Principal Correspondents: Amy Robinson Bowne; Mary Robinson Morton.
- 0404 **Bowne, George—Letter to Thomas and Sarah Robinson, 23 November 1795.** 2 frames.
Principal Correspondents: George Bowne; Thomas Robinson; Sarah Robinson.
- 0406 **Bringhurst, Joseph—Letter to John Morton, 12 August 1793.** 3 frames.
Major Topic: Thoughts on death.
Principal Correspondents: Joseph Bringhurst; John Morton.
- 0409 **Bringhurst, Joseph—Letter to John Morton, 18 November 1793.** 4 frames.
Major Topics: Diseases and disorders; move to Philadelphia, Pennsylvania.
Principal Correspondents: Joseph Bringhurst; John Morton.
- 0413 **Bringhurst, James—Letter to John Morton, 4 February 1793.** 2 frames.
Major Topic: Marriage.
Principal Correspondents: James Bringhurst; John Morton.
- 0415 **Borden, Mary—Quitclaim for Land on Eastons Point, 1793.** 3 frames.
Major Topic: Women and property.
- 0418 **Bringhurst, James—Letter to John Morton, 21 August 1793.** 4 frames.
Principal Correspondents: James Bringhurst; John Morton.
- 0422 **Burling, Mary—Letter to Ann Richardson, 18 November 1727 or 1728.** 2 frames.
Major Topic: Health conditions.
Principal Correspondents: Mary Burling; Ann Richardson.
- 0424 **Carpenter, Richard and Caleb—Letter to Thomas Robinson, 14 April 1770.** 2 frames.
Major Topic: Business and industry.
Principal Correspondents: Richard Carpenter; Caleb Carpenter; Thomas Robinson.
- 0426 **Chaloner, Job—Letter to John Morton, 19 April 1794.** 3 frames.
Major Topics: Marriage; health conditions; diseases and disorders.
Principal Correspondents: Job Chaloner; John Morton.
- 0429 **Chaloner, P.—Letter to Mary Docray, 15 December 1785.** 2 frames.
Major Topic: Diseases and disorders.
Principal Correspondents: P. Chaloner; Mary Docwray.
- 0431 **Colley, Thomas—Sermon, 1787.** 9 frames.
- 0440 **[Connell], Ezekiel (1733–1800)—Letter to Col. Bowen, 22 July 1779.** 3 frames.
Principal Correspondent: Ezekiel Connell.

- 0443 **[Connell], Ezekiel (1733–1800)—Letter to Gen. Greene, 3 April 1781.** 2 frames.
Major Topic: Naval forces in Chesapeake Bay during American Revolution.
Principal Correspondent: Ezekiel Connell.
- 0445 **Delgrave, Walter—Certificate, 1764.** 3 frames.
Major Topics: Delgrave family; baptism.
Principal Correspondent: William Bryan.
- 0448 **Dodson, Mary—Letter to Amy Thurston, 1791.** 5 frames.
Major Topic: Death.
Principal Correspondents: Mary Dodson; Amy Thurston.
- 0453 **Antigua, [1770].** 2 frames.
Major Topics: Ships and shipping; Antigua; Philadelphia, Pennsylvania.
- 0455 **Letter to Mary Dockray, 22 March 1783.** 3 frames.
Major Topic: Poverty.
Principal Correspondent: Mary Docwray.
- 0458 **Easton, Jonathan—Declaration regarding Property, 18 February 1773.** 3 frames.
Major Topics: Property; Rhode Island.
- 0461 **Fisher, Esther—Illness of Father Joshua Fisher, 1782–1783.** 7 frames.
Major Topics: Diseases and disorders; Joshua Fisher.
- 0468 **Fisher, Hannah Rodman—Letters, 1764–1819.** 28 frames.
Major Topics: Seasons; Rodman family; clothing; travel; marriage; smallpox; photograph.
Principal Correspondent: Hannah Rodman Fisher.
- 0496 **Fisher, Hannah Rodman—Letter to Samuel Rowland Fisher, 1807.** 5 frames.
Major Topics: Influenza; infant mortality; health conditions.
Principal Correspondents: Hannah Rodman Fisher; Samuel Rowland Fisher.
- 0501 **Joshua Fisher & Sons, Insurance Policies for Ships, 1766.** 6 frames.
Major Topics: Insurance and insurance industry; ships and shipping.
- 0507 **Fisher, Joshua, 1775–1806.** 2 frames.
Major Topic: Joshua Fisher (portrait).
- 0509 **Fisher, Miers—Letter to Thomas Fisher, 31 May 1793.** 5 frames.
Major Topics: Financial institutions; prices.
Principal Correspondents: Miers Fisher; Thomas Fisher.
- 0514 **Fisher, [Miers]—Letter to Samuel R. Fisher, 20 August 1792.** 5 frames.
Major Topics: Health conditions; death.
Principal Correspondents: Miers Fisher; Thomas Fisher.
- 0519 **Fisher, Sally—Letter to Samuel Rowland Fisher (brother), 1783 or 1784.** 5 frames.
Major Topic: Fisher family.
Principal Correspondents: Sally Fisher; Samuel Rowland Fisher.
- 0524 **Fisher, Sally to Maria Robinson Morton, 28 July 1783.** 7 frames.
Major Topics: Marriage; poetry.
Principal Correspondent: Sally Fisher.
- 0531 **Fisher, Samuel R. & Miers—Circular Letter, 1793.** 3 frames.
Major Topic: Plague.
- 0534 **Fisher, Samuel Rowland—Note, [Undated].** 2 frames.
Major Topics: Yellow fever in Philadelphia, Pennsylvania; Rodman family; Fisher family.
- 0536 **Fisher, Samuel Rowland—Letter to Mary Jones, 1 April 1793.** 2 frames.
Major Topics: Clothing; marriage.
Principal Correspondents: Samuel Rowland Fisher; Mary Jones.
- 0538 **Fisher, Samuel Rowland—Letter to Samuel Robinson, 1 December 1793.** 7 frames.
Major Topics: Philadelphia, Pennsylvania; diseases and disorders.
Principal Correspondent: Samuel Rowland Fisher.

- 0545 **Foulke, E.—Letters to Mary Robinson Morton, 1797–1798.** 7 frames.
Major Topics: Health conditions; Quaker meetings; diseases and disorders; travel to Newport, Rhode Island.
Principal Correspondents: Elizabeth Foulke; Mary Robinson Morton.
- 0552 **Friends, England—Subscription for Relief of New York & Newport Friends, 1779.** 3 frames.
Major Topics: England; Quakers; New York State; Rhode Island.
Principal Correspondents: Thomas Robinson; Samuel Bowne; Henry Haydock; Joseph Delaplaine; Walter Franklin.
- 0555 **Friends, [Rhode Island]—Women’s Yearly Meeting, 1794.** 4 frames.
Major Topics: Quakers; women; Newport, Rhode Island.
- 0559 **Gardiner, John—Letter to Molly Robinson [Morton], 1 March 1790.** 4 frames.
Major Topic: Proposal of marriage by widower.
Principal Correspondents: John Gardiner; Mary Robinson Morton.
- 0563 **Godfrey, Lawford—Letter to Thomas Richardson, 20 June 1723 or 1724.** 2 frames.
Major Topic: Guidelines for buying a horse or mare.
Principal Correspondents: Lawford Godfrey; Thomas Richardson.
- 0565 **Haines, Margaret—Letter to Amy Thurston, 17 August 1786.** 3 frames.
Major Topic: Quaker meeting.
Principal Correspondents: Margaret Haines; Amy Thurston.
- 0568 **Hart, John—Document regarding Joshua Fisher, 1768.** 2 frames.
Major Topic: Contract.
- 0570 **Hathaway, Elizabeth—Newport Probate Court, 1784.** 2 frames.
Major Topic: Wills and estates.
- 0572 **Hathaway, Elizabeth—Deed, Newport, 16 March 1793.** 5 frames.
Major Topics: Women and property; Elizabeth Hathaway; Newport, Rhode Island.
Principal Correspondent: Clarke Rodman.
- 0577 **Hathaway, Elizabeth—Petition, October 1793.** 2 frames.
Major Topic: Wills and estates.
- 0579 **Hathaway, Nathaniel (Capt.), d. 1783.** 11 frames.
Major Topics: Debts; sale of house; wills and estates.
Principal Correspondent: Nathaniel Hathaway.
- 0590 **Heathcote, Caleb—Letter to Mr. Newberry, 1695.** 3 frames.
Major Topic: Apprenticeship of Thomas Richardson.
Principal Correspondent: Caleb Heathcote.
- 0593 **Holmes, Samuel—Will, Newport, 7 November 1767.** 5 frames.
Major Topic: Wills and estates.
- 0598 **Ladd, Thomas—Letter to John Morton, 10 June 1806.** 3 frames.
Major Topic: Husband separated from wife.
Principal Correspondents: Thomas Ladd; John Morton.
- 0601 **Lewis, Mary—Letter to Mary Robinson Morton, 17 July 1793.** 3 frames.
Major Topic: Travel.
Principal Correspondents: Mary Lewis; Mary Robinson Morton.
- 0604 **Logan, William—Letter to Amy Richardson, 14 June 1756.** 3 frames.
Major Topics: Travel; gift of oysters.
Principal Correspondents: William Logan; Amy Richardson.
- 0607 **[MacKenzie]—Man of Feeling, 1771.** 139 frames.
Major Topics: England; Bedlam insane asylum; prostitution; British colonialism.
- 0746 **Morning Star, 1774.** 2 frames.
Major Topic: Ships and shipping.
- 0748 **Morton, John—Letters to Mary Robinson Morton, November 1797.** 8 frames.
Major Topics: Travel; Providence, Rhode Island; Connecticut; Philadelphia, Pennsylvania.

- Principal Correspondents:* John Morton; Mary Robinson Morton.
- 0756 **Morton, John—Letter to Thomas Robinson, 26 October 1796.** 4 frames.
Major Topics: Farm; absconding debtor; childbirth; infant mortality.
Principal Correspondents: John Morton; Thomas Robinson.
- 0760 **Morton, John and Mary Robinson Morton—Letter to William R. Thurston, 17 March 1796.** 2 frames.
Major Topic: Perfection of deed.
Principal Correspondents: John Morton; Mary Robinson Morton; William R. Thurston.
- 0762 **Morton, Mary Robinson—Letters to Amy Robinson Bowne, [1796 and Undated].** 8 frames.
Major Topic: Robinson family.
Principal Correspondents: Mary Robinson Morton; Amy Robinson Bowne.
- 0770 **Morton, Mary Robinson—Letters to Abigail Robinson, 1799.** 5 frames.
Major Topics: Health conditions; leprosy; Robinson family.
Principal Correspondents: Mary Robinson Morton; Abigail Robinson.
- 0775 **Morton, Mary Robinson—Letter to John Morton, Jr. (son), 23 December 1797.** 3 frames.
Major Topics: Ships and shipping; Newport, Rhode Island; eye infection; newspapers.
Principal Correspondents: Mary Robinson Morton; John Morton Jr.
- 0778 **Morton, Mary (Robinson)—Letter to Mary Robinson (niece), 30 April 1795 and February 1796.** 11 frames.
Major Topics: Robinson family; Morton family; measles; child discipline.
Principal Correspondents: Mary Robinson Morton; Mary Robinson.
- 0789 **Robinson, Abigail—Letter to Rowland Robinson (brother), 2 December 1781.** 7 frames.
Major Topics: Portraits; Robinson family; marriage; death.
Principal Correspondents: Abigail Robinson; Rowland Robinson.
- 0796 **Robinson, Abigail—Letters to Rowland Robinson (brother), 15 March 1785; 11 December 1786.** 6 frames.
Major Topic: Health conditions.
Principal Correspondents: Abigail Robinson; Rowland Robinson.
- 0802 **Morton, Mary Robinson—Letter to Sarah Robinson (mother), [1799 and Undated].** 5 frames.
Major Topics: Robinson family; servants; health conditions.
Principal Correspondents: Mary Robinson Morton; Sarah Robinson.
- 0807 **Morton, Mary Robinson—Letter to Sarah Robinson (mother), [1796–1799].** 14 frames.
Major Topics: Robinson family; pregnancy; reports of fever in Newport, Rhode Island; exorbitant rents and yellow fever in Philadelphia, Pennsylvania.
Principal Correspondents: Mary Robinson Morton; Sarah Robinson.
- 0821 **Morton, Mary Robinson—Letter to Sally (sister), 10 April 1781.** 4 frames.
Major Topic: Health conditions.
Principal Correspondent: Mary Robinson Morton.
- 0825 **Morton, Mary Robinson—Letter to Thomas and Sarah Robinson, 12 October 1795.** 5 frames.
Major Topics: Tallow and candles; soap and cake recipes; fever; health conditions; childbirth.
Principal Correspondents: Mary Robinson Morton; Thomas Robinson; Sarah Robinson.
- 0830 **[Morton, Mary Robinson]—Letter to Amy Thurston, 23 August 1775.** 3 frames.
Major Topic: Health conditions.
Principal Correspondents: Mary Robinson Morton; Amy Thurston.
- 0833 **Morton, Mary Robinson—Letter to Amy Thurston, 7 July 1783.** 3 frames.
Major Topics: Child illness; wedding; health conditions; Rodman family.
Principal Correspondents: Mary Robinson Morton; Amy Thurston.
- 0836 **[Morton], Mary Robinson—Letters to Amy Thurston, 6 January 1785 and 8 June 1785.** 7 frames.
Major Topics: Household matters; death; diseases and disorders; Rodman family; Robinson family; preacher; courtship and matrimony.
Principal Correspondents: Mary Robinson Morton; Amy Thurston.

- 0843 **[Morton], Mary Robinson—Letters to Amy Thurston, 20 April 1789 and 11 May 1789.** 9 frames.
Major Topics: Travel by ship; rheumatism; health conditions; smallpox; Quaker marriage; adultery and illegal abortion of a woman in Providence, Rhode Island.
Principal Correspondents: Mary Robinson Morton; Amy Thurston.
- 0852 **Morton, Mary Robinson—Letters to William R. Thurston, 8 March 1791 and 9 November 1792.** 6 frames.
Major Topics: Travel; health conditions.
Principal Correspondents: Mary Robinson Morton; William R. Thurston.
- 0858 **Mott, E[liza]—Letter to Amy Thurston, Undated.** 2 frames.
Major Topic: Sheltering of persons affected by local troubles.
Principal Correspondents: Eliza Mott; Amy Thurston.
- 0860 **Needham, Alice—Letter to John Morton, 7 April 1793.** 5 frames.
Major Topics: Religion; marriage.
Principal Correspondents: Alice Needham; John Morton.
- 0865 **Needham, Alice—Letter to John Morton, 4 April 1794.** 3 frames.
Major Topic: Religion.
Principal Correspondents: Alice Needham; John Morton.
- 0868 **New Jersey (Colony) Governor, [Undated].** 2 frames.
Major Topic: Wills and estates.
- 0870 **Newport Mercury, 1791 and 1793 (2 issues).** 9 frames.
Major Topics: News from Newport (Rhode Island), Vienna (Austria), Paris (France), London (England), Philadelphia (Pennsylvania), Hartford (Connecticut), New London (Connecticut), and Boston (Massachusetts); War Department; piracy; Spanish forces in Bermuda; George Washington's address to Congress.
- 0879 **Noailles, Louis Marie, Vicomte de (1756–1804)—Copies of Various Letters to Mary Robinson (Morton), 1781.** 3 frames.
Principal Correspondents: Louis Marie Noailles; Mary Robinson Morton.
- 0882 **Noailles, Countess—Copy of Letter of October 1787 [accompanying a set of] Sevres China.** 3 frames.
Principal Correspondent: Countess Noailles.
- 0885 **Noailles, Countess—Letter to Sarah Robinson, Newport, 2 June 1793.** 3 frames.
Major Topic: Education of nobility in France.
Principal Correspondents: Countess Noailles; Sarah Robinson.
- 0888 **Offley, Daniel—Letter to John Morton, 10 June 1793.** 4 frames.
Major Topic: Suicide.
Principal Correspondents: Daniel Offley; John Morton.
- 0892 **Olney, George—Account Books, 1772 and 1776–1777.** 58 frames.

Reel 2

Robinson Papers cont.

- 0001 **Pennsylvania Journal and Weekly Advertiser, [1765].** 5 frames.
Major Topics: News from Providence (Rhode Island), Boston (Massachusetts), Paris (France), London (England), Annapolis (Maryland), Newport (Rhode Island), and Philadelphia (Pennsylvania); runaway servants.
- 0006 **Pennsylvania Packet, [1769].** 3 frames.
Major Topic: Shipment of merchandise from England to Philadelphia, Pennsylvania.
- 0009 **Pyle, William—Letter to John Morton, 10 July 1790.** 2 frames.
Major Topic: Business and industry.
Principal Correspondents: William Pyle; John Morton.
- 0011 **Redwood, Patience—Will, 1733–1734 and 1746.** 3 frames.
- 0014 **Redwood, Samuel H.—Will, 3 May 1790.** 5 frames.

- 0019 **Rhode Island (Colony)—Petition, 1764.** 5 frames.
Major Topic: Regulation of currency in Rhode Island colony.
- 0024 **[Richardson?]**—**[Memoirs concerning Ann Richardson (sister), 1728].** 2 frames.
Major Topic: Death.
- 0026 **Richardson, Thomas—Letter to Amy Richardson (daughter), 4 October 1755.** 2 frames.
Major Topics: Travel; health conditions.
Principal Correspondents: Thomas Richardson; Amy Richardson.
- 0028 **Richardson, Thomas—Letter to Mary Richardson, 1729.** 2 frames.
Principal Correspondents: Thomas Richardson; Mary Richardson.
- 0030 **Richardson, Thomas—Letter to Amy Richardson (daughter), 23 June 1762.** 3 frames.
Major Topics: Smallpox; marriage.
Principal Correspondents: Thomas Richardson; Amy Richardson.
- 0033 **Richardson, Thomas—Letter to Polly Robinson, 18 April 1782.** 5 frames.
Major Topics: Thoughts on America and peace; shipments of tobacco.
Principal Correspondents: Thomas Richardson; Polly Robinson.
- 0038 **Richardson, Thomas—Letter to Mary Robinson Morton, 20 October 1795.** 2 frames.
Major Topics: Asthma; travel; death.
Principal Correspondents: Thomas Richardson; Mary Robinson Morton.
- 0040 **Robinson, Abby—Letter to Mary Robinson Morton, 18 December 1798.** 2 frames.
Major Topic: Fire.
Principal Correspondents: Abby Robinson; Mary Robinson Morton.
- 0042 **Robinson, Abigail—Will, 21 May 1834.** 6 frames.
- 0048 **Robinson, Abigail—Letters to Mary Robinson Morton (sister), 1794.** 24 frames.
Major Topics: Health conditions; execution of the Countess Noailles; travels of family members; death due to smallpox; wedding.
Principal Correspondents: Abigail Robinson; Mary Robinson Morton.
- 0072 **Robinson, Abigail—Letters to Mary Robinson Morton, 1795.** 5 frames.
Major Topics: Marriages; mother's willingness to bind child as indentured servant.
Principal Correspondents: Abigail Robinson; Mary Robinson Morton.
- 0077 **Robinson, Abigail—Letters to Mary Robinson Morton, 1796.** 12 frames.
Major Topics: Health conditions; remedies.
Principal Correspondents: Abigail Robinson; Mary Robinson Morton.
- 0089 **Robinson, Abigail—Letters to Mary Robinson Morton, 1797.** 4 frames.
Major Topic: Monthly-meeting school.
Principal Correspondents: Abigail Robinson; Mary Robinson Morton.
- 0093 **Robinson, Abigail—Letters to Mary Robinson Morton, 1798.** 15 frames.
Major Topics: Health conditions; education of a child; yellow fever in Boston, Massachusetts, and Newport, Rhode Island; smallpox; remedies.
Principal Correspondents: Abigail Robinson; Mary Robinson Morton.
- 0108 **Robinson, Abigail—Letters to Mary Robinson Morton, 1799.** 16 frames.
Major Topics: Study of French language; infant mortality; yellow fever.
Principal Correspondents: Abigail Robinson; Mary Robinson Morton.
- 0124 **Robinson, Abigail—Letter to Amy Thurston, 7 October 1786.** 5 frames.
Major Topics: Smallpox; births.
Principal Correspondents: Abigail Robinson; Amy Thurston.
- 0129 **Robinson, Abigail—Letter to William R. Thurston (cousin), 18 September 1792.** 4 frames.
Major Topics: Religion; recommendation of exercise (riding).
Principal Correspondents: Abigail Robinson; William R. Thurston.
- 0133 **Robinson, Abigail—Letter to William R. Thurston (cousin), 17 June 1796.** 2 frames.
Major Topic: Engagement.
Principal Correspondents: Abigail Robinson; William R. Thurston.

- 0135 **Robinson, Mary—3 Letters to Abigail Robinson (sister), 1783.** 10 frames.
Major Topic: Prediction of marriage.
Principal Correspondents: Mary Robinson Morton; Abigail Robinson.
- 0145 **Robinson, Amy—Letter to Mary Thomas, 3 August 1791.** 2 frames.
Principal Correspondents: Amy Robinson; Mary Thomas.
- 0147 **Robinson, Amy—Letter to William R. Thurston, 7 April 1791.** 3 frames.
Principal Correspondents: Abigail Robinson; William R. Thurston.
- 0150 **Robinson, Esther—Letter to Mary R. Morton, 25 February 1799.** 3 frames.
Major Topic: Clothing.
Principal Correspondents: Esther Robinson; Mary Robinson Morton.
- 0153 **Robinson, Sarah—Letters to Mary Robinson Morton, 1796–1797.** 12 frames.
Major Topics: Diseases and disorders; purchase of mill; anxiety respecting a son at sea; procuring of black servant; smallpox; boarding school; mental illness.
Principal Correspondents: Sarah Robinson; Mary Robinson Morton.
- 0165 **Robinson, Sarah—Letters to Mary Robinson Morton, 1794.** 5 frames.
Principal Correspondents: Sarah Robinson; Mary Robinson Morton.
- 0170 **Robinson, Sarah—Letter to Mary Robinson Morton, 28 October 1784.** 4 frames.
Major Topics: Wool and wool industry; clothing.
Principal Correspondents: Sarah Robinson; Mary Robinson Morton.
- 0174 **Robinson, Thomas—Account Book, 1790–1791.** 26 frames.
- 0200 **Robinson, Thomas—Letters to John Morton, 26 October 1795 and 9 December 1795.** 5 frames.
Major Topic: Financial institutions.
Principal Correspondents: Thomas Robinson; John Morton.
- 0205 **Robinson, Thomas—Letters to John Morton, 1796.** 11 frames.
Major Topic: Property.
Principal Correspondents: Thomas Robinson; John Morton.
- 0216 **Robinson, Thomas—Letters to John Morton, December 1796.** 4 frames.
Major Topics: Application to Congress; schoolmistress.
Principal Correspondents: Thomas Robinson; John Morton.
- 0220 **Robinson, Thomas—Letter to John Morton, 29 March 1797.** 3 frames.
Major Topics: Prosecution for slave trade; schoolmistress.
Principal Correspondents: Thomas Robinson; John Morton.
- 0223 **Robinson, Thomas—Letters to John Morton, 1798.** 15 frames.
Major Topics: Drowning of intoxicated man; eye problems; mortgage case; yellow fever in Philadelphia, Pennsylvania.
Principal Correspondents: Thomas Robinson; John Morton.
- 0238 **Robinson, Thomas—Letters to John Morton, 1799.** 21 frames.
Major Topics: Mortgage case; inoculation of child; yellow fever on board ship and in Philadelphia, Pennsylvania; shipment of cheese and candles.
Principal Correspondents: Thomas Robinson; John Morton.
- 0259 **Robinson, Thomas—Letters to John and Mary Morton, 28 June 1798 and 12 September 1798.** 6 frames.
Major Topic: Yellow fever.
Principal Correspondents: Thomas Robinson; John Morton; Mary Robinson Morton.
- 0265 **Robinson, Thomas—Letter to Mary Robinson Morton, 4 October 1798.** 3 frames.
Major Topic: Yellow fever.
Principal Correspondents: Thomas Robinson; Mary Robinson Morton.
- 0268 **Robinson, William Thomas—Letter to Sister, February 1783.** 5 frames.
Major Topic: American Revolution.
Principal Correspondent: William Thomas Robinson.

- 0273 **Robinson, Thomas—Letter to Mary Robinson Morton (sister), 5 October 1795.** 4 frames.
Major Topic: Yellow fever and mortality in Philadelphia, Pennsylvania.
Principal Correspondents: Thomas Robinson; Mary Robinson Morton.
- 0277 **Robinson, Thomas—Letters to Mary Robinson Morton (sister), 1796–1798.** 7 frames.
Major Topic: Birth; yellow fever and mortality in New York City.
Principal Correspondents: Thomas Robinson; Mary Robinson Morton.
- 0284 **Robinson, Thomas—Letters to John Morton and Mary Robinson Morton, 1798.** 4 frames.
Major Topic: Yellow fever.
Principal Correspondents: Thomas Robinson; John Morton; Mary Robinson Morton.
- 0288 **Robinson, Mary—Letter to Amy Robinson, 29 September 1785.** 5 frames.
Principal Correspondents: Mary Robinson; Amy Robinson.
- 0293 **Robinson, Mary—Letters to Amy Thurston, 18 January 1778; 2 March 1781.** 9 frames.
Principal Correspondents: Mary Robinson; Amy Thurston.
- 0302 **Rodman, Sarah—Letter to Samuel R. Fisher, 23 June 1801.** 8 frames.
Major Topics: Scarlet fever; attachment of property; bankruptcy law.
Principal Correspondents: Sarah Rodman; Samuel R. Fisher.
- 0310 **Rodman, Sarah—Letter to Rebecca Jones, 16 July 1790.** 5 frames.
Major Topics: Marriage; separation of family; supply of Bibles for the poor; theatrical and other amusements as dangerous to youth.
Principal Correspondents: Sarah Rodman; Rebecca Jones.
- 0315 **Rotch, Charity—Letters to Mary Robinson Morton, 21 September 1797; 30 December 1799.** 5 frames.
Principal Correspondents: Charity Rotch; Mary Robinson Morton.
- 0320 **Rotch, Thomas—Letter to Samuel R. Fisher, 15 October 1792.** 2 frames.
Major Topics: Smallpox; inoculations.
Principal Correspondents: Thomas Rotch; Samuel R. Fisher.
- 0322 **Rotch, Thomas—Letter to Samuel R. Fisher, 24 October 1792.** 2 frames.
Major Topic: Smallpox.
Principal Correspondents: Thomas Rotch; Samuel R. Fisher.
- 0324 **Rotch, Thomas—Letter to Thomas Morton, 15 April 1820.** 5 frames.
Major Topic: Emancipation.
Principal Correspondents: Thomas Rotch; Thomas Morton.
- 0329 **Sharpless, Catharine—Letter to Esther Morton, [c. 1798].** 4 frames.
Principal Correspondent: Catharine Sharpless.
- 0333 **Copy of Letter to Eliza R. G. Hazard about Robinson Family, [1846].** 3 frames.
Principal Correspondent: Eliza R. G. Hazard.
- 0336 **Stabler, Edward—Letter to Joshua Fisher and Sons, 25 March 1773.** 3 frames.
Major Topic: Tobacco.
Principal Correspondent: Edward Stabler.
- 0339 **Stewart, Francis—Letter to Mary Robinson Morton, 19 July 1794.** 3 frames.
Principal Correspondents: Francis Stewart; Mary Robinson Morton.
- 0342 **Swanson, Christopher—Will, 22 November 1735.** 3 frames.
- 0345 **Tatnall, Joseph—Letter to John Morton, 8 November 1793.** 3 frames.
Major Topic: Shipment of flour.
Principal Correspondents: Joseph Tatnall; John Morton.
- 0348 **Taylor, Isaac—Letter to John Morton, 16 November 1812.** 1 frame.
Major Topic: Death of relative.
Principal Correspondents: Isaac Taylor; John Morton.
- 0349 **Thomson, James—The Works of James Thomson, 1774.** 108 frames.
Major Topic: Dramatic plays.
- 0457 **Letter to Thomas Richardson, 21 November [1762].** 3 frames.

- Principal Correspondent:* Thomas Richardson.
- 0460 **Thurston, Amy—Letter to William R. Thurston, 19 February 1786.** 5 frames.
Principal Correspondents: Amy Thurston; William R. Thurston.
- 0465 **[Waln, Richard]—Letter to John Morton, 10 June 1794.** 3 frames.
Major Topic: Courtship of widower.
Principal Correspondents: Richard Waln; John Morton.
- 0468 **[Wanton, Philip]—Land Contract, March 1774.** 4 frames.
- 0472 **Williams, Amy—Letter to Mary Robinson Morton (cousin), 1 March 1820.** 4 frames.
Principal Correspondents: Amy Williams; Mary Robinson Morton.
- 0476 **Woolman, John—Letter to Abraham Farrington, 1 October 1757.** 3 frames.
Major Topic: Raising of militia.
Principal Correspondents: John Woolman; Abraham Farrington.
- 0479 **Wood, Henry A., Jr.—Book of John Morton’s, [Undated].** 30 frames.
Major Topics: Financial institutions; government officials; Pennsylvania; courts; Philadelphia, Pennsylvania; Quakers; state currencies.
- 0509 **Letter to Amy Thurston, 2 November 1778.** 6 frames.
Principal Correspondent: Amy Thurston.
- 0515 **Letter to Joshua Fisher and Other Documents, [Undated].** 15 frames.
Major Topics: Smallpox; tracing of Fisher family origins in England, voyage with William Penn, early settlement on the Delaware River, and fur trade with Indians; Quaker clockmaker Thomas Wagstaff; poetry; estate of Samuel R. Fisher.
Principal Correspondent: Joshua Fisher.
- 0530 **To the Memory of Gideon T. Wanton, Newport, 1787.** 7 frames.
- 0537 **[Miscellaneous Documents, 1763 and Undated].** 12 frames.
Major Topics: Property; 1620 land grants of King James and Plymouth Company.
- 0549 **[Miscellaneous Documents, 1821 and Undated].** 6 frames.
- 0555 **[Miscellaneous Documents, 1700s, 1800s, and Undated].** 104 frames.
Major Topics: Samuel W. Clark; poetry; Yearly Meeting of Women Friends, London.
- 0659 **[Miscellaneous Documents, 1700s and Undated].** 17 frames.
Major Topics: Infant mortality; travel; diseases and disorders.
- 0676 **[Miscellaneous Documents, 1792, 1900s, and Undated].** 25 frames.
Major Topics: Robinson family; execution of the Countess Noailles; fortifications; Louis Marie Noailles; wills and estates.
Principal Correspondent: Anna Wharton Wood.
- 0701 **[Contracts, 1700s].** 8 frames.
- 0709 **[Miscellaneous Documents, 1772 and 1774].** 3 frames.
Major Topic: Property action in Rhode Island court.
- 0712 **[Miscellaneous Documents, 1700s and 1800s].** 59 frames.
Major Topics: Clergy; poetry; Newport, Rhode Island, ships and shipping; Thomas Robinson (merchant).
- 0771 **[Miscellaneous Notes and Bills, 1700s].** 26 frames.
Major Topics: Ships and shipping; Joshua Fisher; agricultural prices.
- 0797 **[Miscellaneous Documents, 1700s].** 8 frames.
Major Topics: Newport, Rhode Island ships and shipping; Thomas Robinson (merchant).
- 0805 **[Miscellaneous Documents, 1779].** 4 frames.
- 0809 **[Miscellaneous Documents, 1700s].** 10 frames.
Major Topics: Newport, Rhode Island, ships and shipping; Thomas Robinson (merchant).
- 0819 **[Miscellaneous Documents, 1793–1802].** 9 frames.
Major Topics: Care of motherless children; thoughts on poetry and Indians.
- 0828 **Collins, Deborah, [16 June 1841].** 3 frames.
Major Topic: New York City society.

- Principal Correspondent:* Deborah Collins.
- 0831 **Dickinson, M., [9 April 1788].** 4 frames.
Major Topic: Education of poor children.
Principal Correspondent: M. Dickinson.
- 0835 **[Farnums], E. H., [Undated].** 3 frames.
Principal Correspondents: E. H. Farnums; E. M. Smith.
- 0838 **M. M.—Letter to Sister, 19 April 1771.** 3 frames.
Major Topic: Accidents and accident prevention.
- 0841 **Maule, Jacob, [25 August 1846].** 4 frames.
Major Topic: Quaker meeting.
Principal Correspondent: Jacob Maule.
- 0845 **Maule, Joshua, [Undated].** 3 frames.
Major Topic: Wills and estates.
Principal Correspondent: Joshua Maule.
- 0848 **Morton, Mary Robinson, [11 February 1794].** 5 frames.
Major Topic: Anxiety of Louis Marie Noailles regarding family in France.
Principal Correspondent: Mary Robinson Morton.
- 0853 **Morton, Robert—Letters, 1832–1840.** 14 frames.
Major Topic: Accounting of estate.
Principal Correspondent: Robert Morton.
- 0867 **Morton, Robert—Catalogue of Library, [ca. 1849].** 5 frames.
Major Topic: Medical books.
Principal Correspondent: Robert Morton.
- 0872 **[Letters about Haverford Boys]—to Daniel B. Smith, 1835–1844.** 17 frames.
Major Topics: Farming apprenticeship; education; Haverford College.
Principal Correspondent: Daniel B. Smith.
- 0889 **Robinson, Abigail, [19 September 1832].** 3 frames.
Major Topic: Newport, Rhode Island, property values and society.
Principal Correspondent: Abigail Robinson.
- 0892 **Smith, Anna Wharton, [7 August 1877].** 6 frames.
Major Topics: Newport, Rhode Island; fishing and lobstering; torpedo station.
Principal Correspondent: Anna Wharton Smith.
- 0898 **Smith, Daniel B., [9 December 1831].** 15 frames.
Major Topics: New Jersey property sales; education.
Principal Correspondents: Daniel B. Smith.

Reel 3

Robinson Papers cont.

- 0001 **Dillwyn—Legal Papers, ca. 1820.** 40 frames.
Major Topic: Wills and estates.
- 0041 **Legal Documents, [1742–1848].** 19 frames.
Major Topics: Wills and estates; indentured servants; medical certificate.
- 0060 **Morton, E.—20 Letters to Anna Kimber, French Creek Boarding School, 1819–1820.** 70 frames.
Major Topic: Execution of poor woman for stealing clothing.
Principal Correspondents: E. Morton; Anna Kimber.
- 0130 **Newspaper Clippings on Farming Techniques, 1876.** 29 frames.
Major Topic: Irrigation.
- 0159 **Smith, Benjamin R.—24 Letters to Daniel B. Smith (father), 1877–1878.** 75 frames.
Principal Correspondents: Benjamin R. Smith; Daniel B. Smith.

- 0234 **Smith, Benjamin R.—94 Letters to Daniel B. Smith (father), 1880.** 276 frames.
Major Topics: Visits to and from Newport, Rhode Island; social life.
Principal Correspondents: Benjamin R. Smith; Daniel B. Smith.
- 0510 **Smith, Mr. and Mrs. Benjamin R., Letters, ca. 1900–1904.** 79 frames.
Major Topics: Imminent death of President Garfield; thoughts on possible Conkling appointment; conquest of Africa by England; children.
Principal Correspondents: Benjamin R. Smith; Daniel B. Smith.
- 0589 **Smith, Benjamin R.—Letters to Margaret M. Smith, 1832–1845.** 24 frames.
Major Topics: Chemistry experiments; social life; visit to New Bedford; religious painting.
Principal Correspondents: Benjamin R. Smith; Margaret M. Smith.
- 0613 **Smith, Mr. and Mrs. Benjamin R.—Letters, 1905–1912 [and 1874–1885].** 119 frames.
Major Topics: Home life in Waltham, Massachusetts; typhoid fever; children's poetry; Massachusetts Anti-Tuberculosis Society exhibition; visit to Boston dentist; Sevres china; sports and athletics at Andover, Massachusetts; canoe trip to Sea Isle, New Jersey.
Principal Correspondents: Benjamin R. Smith; Anna Wharton Wood; Daniel B. Smith.
- 0732 **Letters to Benjamin R. Smith, ca. 1876.** 55 frames.
Principal Correspondents: Benjamin R. Smith; Anna Wharton Smith; Daniel B. Smith; Esther F. Smith.
- 0787 **Smith, Daniel B.—Letters, 1833–1850.** 27 frames.
Major Topics: Medicine; inheritance tax.
Principal Correspondent: Daniel B. Smith.
- 0814 **Smith, Daniel B.—Recipient, [1817–1863].** 25 frames.
Major Topic: District Court, Harrisburg, Pennsylvania.
Principal Correspondent: Daniel B. Smith.
- 0839 **Smith, Daniel B.—Letters, 1840–1860.** 42 frames.
Major Topics: American Philosophical Society; frivolous assault and battery charge; Philadelphia politics; entomology; wills and estates; Philadelphia College of Pharmacy.
Principal Correspondent: Daniel B. Smith.

Reel 4

Robinson Papers cont.

- 0001 **Smith, Daniel B.—Recipient, [1836–1857].** 23 frames.
Major Topics: Mortgages; property; Fairfax Institute, Washington, D.C.; prospective teacher at Haverford College; wills and estates.
Principal Correspondent: Daniel B. Smith.
- 0024 **Smith, Daniel B.—Recipient, [1831–1872].** 22 frames.
Major Topics: Wills and estates; prospective teacher at Haverford College.
Principal Correspondent: Daniel B. Smith.
- 0046 **Smith, Esther Morton—Letters to Mary [Morton] Smith, [Undated].** 23 frames.
Major Topics: Newport, Rhode Island, society compared with society in Scotland; visits to Concord, Massachusetts, and Philadelphia, Pennsylvania; Haverford College; study of law and chemistry by a woman.
Principal Correspondents: Esther Morton Smith; Mary Morton Smith.
- 0069 **Smith, Esther Morton, [1867 and Undated].** 13 frames.
Principal Correspondents: Esther Morton Smith; Benjamin R. Smith.
- 0082 **Smith, Esther Morton—Letters to Daniel B. Smith, [1853–1879].** 41 frames.
Major Topics: Differences between Greek Orthodox and Roman Catholic churches; literature on the French Revolution.
Principal Correspondents: Esther Morton Smith; Daniel B. Smith.

- 0123 **Smith, Esther Morton, [1829–1859].** 82 frames.
Major Topics: Chemistry; trip to New York City; sale of property.
Principal Correspondents: Esther Morton Smith; Mary Morton Smith.
- 0205 **Smith, Esther Morton—Letters to Benjamin R. Smith from Newport, 1867.** 60 frames.
Major Topics: Newport, Rhode Island, social life; trip to New Bedford, Massachusetts.
Principal Correspondents: Esther Morton Smith; Benjamin R. Smith.
- 0265 **Smith, Mary M., [Undated].** 6 frames.
Principal Correspondent: Mary Morton Smith.
- 0271 **Smith, William Wharton, [1877].** 4 frames.
Major Topics: Newport, Rhode Island; fishing.
Principal Correspondent: William Wharton Smith.
- 0275 **Southwark—Overseers of the Poor, 1742–1766.** 7 frames.
Major Topics: Poverty; Pennsylvania.
- 0282 **Study of Indians (Senecas), [Undated].** 5 frames.
Major Topic: Native Americans.
- 0287 **Verse, [1829 and Undated].** 8 frames.
Major Topic: Poetry.
- 0295 **Wharton, Esther F., [1839].** 3 frames.
Principal Correspondent: Esther F. Wharton.
- 0298 **Wood, Anna Wharton—Genealogical Inquiries, [Undated].** 15 frames.
Major Topics: Thomas Mifflin; Wharton family.
- 0313 **Robinson, William R.—Account of [Tannery], 1790–1792.** 25 frames.
- 0338 **Robinson, Thomas—Account Book, 1781–1786.** 33 frames.
- 0371 **Wool Samples Folder, [Undated].** 2 frames.
- 0373 **Robinson, William R.—Account of [Tannery], 1786–1791.** 56 frames.
- 0429 **Hayward, Lydia—Account Book of Boat Repairs, [Undated].** 39 frames.
- 0468 **Robinson, Rowland—Account Book, 1781.** 11 frames.
- 0479 *Narragansett Times*, 30 July 1880; *Providence Journal*, 22 May 1879. 41 frames.
- 0520 **Robinson, Abigail—Account Book, 1817.** 37 frames.
- 0557 **Bills and Checks, 1757–1812.** 17 frames.
- 0574 **Fisher, Joshua and Son—Invoice Book, 1760–1764 [empty folder].** 1 frame.
- 0575 **Thomas Robinson Quartering Order—MS 1994-9-1 [28 September 1780].** 7 frames.
- 0582 **Eighteenth and 19th Century [Thomas Robinson] Account Books [also contains correspondence of the Louis Marie Noailles].** 192 frames.
Major Topic: French Revolution.
Principal Correspondent: Louis Marie Noailles.
- 0774 **Fisher, Esther—Letters to Samuel R. Fisher, Winchester, 1777–1778.** 14 frames.
Principal Correspondents: Esther Fisher; Samuel R. Fisher.
- 0788 **Fisher, Joshua (1707–1783)—Letters to His Son in Winchester “Exile,” [1777].** 5 frames.
Principal Correspondent: Joshua Fisher.
- 0793 **Typescripts of Exile Manuscripts, [1777].** 9 frames.
Major Topic: Quakers.
- 0802 **Emlen, Samuel, 1791.** 3 frames.
Principal Correspondents: Samuel Emlen Jr.; Amy Robinson.
- 0805 **Richardson, Thomas—Letter from Amy Richardson, 1715.** 2 frames.
Principal Correspondents: Thomas Richardson; Amy Richardson.
- 0807 **Philadelphia Chaloner to Mary Docwray, 15 December 1785.** 2 frames.
Principal Correspondent: Mary Docwray.
- 0809 **Amy Robinson to Mary Thomas, 3 August 1791.** 3 frames.
Principal Correspondents: Amy Robinson; Mary Thomas.
- 0812 **Supercargo’s Pocket Notebook, 1756–1758.** 37 frames.

- 0849 **Samuel Rodman Fisher's Wishes as to the Disposition of the Virginia Exile Papers, 9 October 1818.** 3 frames.
- 0852 **Letters to Thomas Robinson, 1770–1794.** 13 frames.
Principal Correspondent: Thomas Robinson.
- 0865 **Fisher, Sally—Letters to Samuel R. Fisher, 1777–1778.** 15 frames.
Major Topic: Quaker exile to Winchester, Virginia.
Principal Correspondents: Sally Fisher; Samuel R. Fisher.
- 0880 **Turner, Jonas, 28 March 1778.** 2 frames.
Major Topic: Quaker exile.
Principal Correspondents: Jonas Turner; Samuel R. Fisher.
- 0882 **Fisher, Samuel R.—Letter to Thomas Fisher, 14 August 1777.** 2 frames.
Principal Correspondents: Samuel R. Fisher; Thomas Fisher.
- 0884 **Quakers Banished from Philadelphia to Winchester, Virginia, 1777–1778.** 72 frames.
Major Topic: Quaker exile to Winchester, Virginia.

Reel 5

Robinson Papers cont.

- 0001 **Miscellaneous Unidentified Manuscripts, [1800s].** 70 frames.
- 0071 **Coggeshall, E.—Letter to Mary R. Morton, 1806.** 5 frames.
Major Topic: Hypochondria.
Principal Correspondents: Elizabeth Coggeshall; Mary Robinson Morton.
- 0076 **Miscellaneous Document, [Undated].** 8 frames.
Major Topic: Thoughts on women.
- 0084 **Fisher, Hannah Rodman—Journal Selections, [1848 and 1877].** 20 frames.
Major Topics: Wedding; poetry; travel.
- 0104 **Friends, Society of—Various Printed Papers, [Undated].** 58 frames.
Major Topics: Quakers; women; American Friends Service Committee.
- 0162 **Gould, John Stanton, [28 April 1868].** 5 frames.
Major Topic: Wanton family.
Principal Correspondent: John Stanton Gould.
- 0167 **Morton, Esther—Letters to Robert Morton (brother), [1813–1822].** 12 frames.
Principal Correspondents: Esther Morton; Robert Morton.
- 0179 **Morton, John—Letter to Amy Robinson, 1812.** 2 frames.
Principal Correspondents: John Morton; Amy Robinson.
- 0181 **Morton, Mary R.—Letters to Esther Morton (daughter), 1807–1809.** 11 frames.
Principal Correspondents: Mary Robinson Morton; Esther Morton.
- 0192 **Morton, Mary Robinson—Letters to Esther [Morton] (daughter), 1810.** 46 frames.
Principal Correspondents: Mary Robinson Morton; Esther Morton.
- 0238 **Morton, Mary Robinson—Letters to Esther Morton (daughter), 1811.** 67 frames.
Major Topics: Philosophy; botany; history.
Principal Correspondents: Mary Robinson Morton; Esther Morton.
- 0305 **Morton, Mary Robinson—Letters to Esther [Morton] (daughter), 1812.** 111 frames.
Major Topics: Advice regarding libel and slander; arithmetic; botany.
Principal Correspondents: Mary Robinson Morton; Esther Morton.
- 0416 **Morton, Mary Robinson—Letters to Esther [Morton] (daughter), 1816.** 16 frames.
Principal Correspondents: Mary Robinson Morton; Esther Morton.
- 0432 **Morton, Mary Robinson—Letters to Esther [Morton] (daughter), 1817.** 18 frames.
Major Topic: Cholera.
Principal Correspondents: Mary Robinson Morton; Esther Morton.

- 0450 **Morton, Mary Robinson—Letters to Esther [Morton] (daughter), 1818.** 21 frames.
Principal Correspondents: Mary Robinson Morton; Esther Morton.
- 0471 **Morton, Mary Robinson—Letters to Esther [Morton] (daughter), 1820.** 4 frames.
Principal Correspondents: Mary Robinson Morton; Esther Morton.
- 0475 **Morton, Mary Robinson—Letters to Esther [Morton] (daughter), 1821.** 20 frames.
Principal Correspondents: Mary Robinson Morton; Esther Morton.
- 0495 **Morton, Mary Robinson—Letters to Esther [Morton] (daughter), 1822.** 22 frames.
Principal Correspondents: Mary Robinson Morton; Esther Morton.
- 0517 **Morton, Mary Robinson—Letters to Esther [Morton] (daughter), 1823.** 4 frames.
Principal Correspondents: Mary Robinson Morton; Esther Morton.
- 0521 **Morton, Mary Robinson—Letters to Esther [Morton] (daughter), 1828–1829.** 4 frames.
Principal Correspondents: Mary Robinson Morton; Esther Morton.
- 0525 **Morton, Mary Robinson—Letters to Robert Morton (son), 1811.** 15 frames.
Major Topic: Education.
Principal Correspondents: Mary Robinson Morton; Robert Morton.
- 0540 **Morton, Mary Robinson—Letters to Robert Morton (son), 1812.** 34 frames.
Major Topic: Education.
Principal Correspondents: Mary Robinson Morton; Robert Morton.
- 0574 **Morton, Mary Robinson—Letters to Robert Morton (son), 1813.** 35 frames.
Major Topic: Education.
Principal Correspondents: Mary Robinson Morton; Robert Morton.
- 0609 **Morton, Mary Robinson—Letters to Robert Morton (son), 1814.** 21 frames.
Major Topic: Education.
Principal Correspondents: Mary Robinson Morton; Robert Morton.
- 0630 **Morton, Mary Robinson—Letters to Robert Morton (son), 1815.** 28 frames.
Major Topic: Education.
Principal Correspondents: Mary Robinson Morton; Robert Morton.
- 0658 **Morton, Mary Robinson—Letters to Robert Morton (son), 1816.** 31 frames.
Major Topic: Education.
Principal Correspondents: Mary Robinson Morton; Robert Morton.
- 0689 **Morton, Mary Robinson—Letters to Robert Morton (son), 1817.** 11 frames.
Major Topic: Education.
Principal Correspondents: Mary Robinson Morton; Robert Morton.
- 0700 **Morton, Mary Robinson—Letters to Robert Morton (son), 1821.** 3 frames.
Principal Correspondents: Mary Robinson Morton; Robert Morton.
- 0703 **Morton, Mary Robinson—Letters to Robert Morton (son), 1822.** 6 frames.
Major Topic: Travel by ship from Newport, Rhode Island.
Principal Correspondents: Mary Robinson Morton; Robert Morton.
- 0709 **Morton, Mary Robinson—Letters to Robert Morton (son), 1823.** 13 frames.
Major Topic: New England social matters.
Principal Correspondents: Mary Robinson Morton; Robert Morton.
- 0722 **Morton, Mary Robinson—Letters to Robert Morton (son), 1824.** 25 frames.
Major Topic: Thoughts on New England.
Principal Correspondents: Mary Robinson Morton; Robert Morton.
- 0747 **Morton, Mary Robinson—Letters to Robert Morton (son), 1825.** 20 frames.
Principal Correspondents: Mary Robinson Morton; Robert Morton.
- 0767 **Morton, Mary Robinson—Letters to Robert Morton (son), 1826.** 4 frames.
Principal Correspondents: Mary Robinson Morton; Robert Morton.
- 0771 **Morton, Robert—Letters to Mary Robinson Morton (mother), 1811–1814.** 29 frames.
Major Topic: Education.
Principal Correspondents: Robert Morton; Mary Robinson Morton.

- 0800 **Morton, Robert—Letters to Mary Robinson Morton (mother), 1815–1816.** 26 frames.
Major Topics: Greek history; education; clothing; school for deaf and dumb.
Principal Correspondents: Robert Morton; Mary Robinson Morton.
- 0826 **Morton, Robert—Letters to Mary Robinson Morton (mother), 1821–1822.** 13 frames.
Major Topic: Education.
Principal Correspondents: Robert Morton; Mary Robinson Morton.
- 0839 **Morton, Robert—Letters to Mary Robinson Morton (mother), 1824–1825.** 34 frames.
Major Topics: Fort Ticonderoga; Saratoga Springs, New York; visit to dentist.
Principal Correspondents: Robert Morton; Mary Robinson Morton.
- 0873 **Morton, Robert—Letters to Mary Robinson Morton (mother), 1826–1828.** 6 frames.
Major Topic: Travel to Buffalo, New York.
Principal Correspondents: Robert Morton; Mary Robinson Morton.
- 0879 **Pearsall, Hannah—Letter to Amy Robinson (cousin), [19 February 1813].** 4 frames.
Principal Correspondents: Hanna Pearsall; Amy Robinson.
- 0883 **Robinson, Abigail—Miscellaneous Manuscripts, [1808–1831].** 26 frames.
- 0909 **Robinson, James—Letter to Abigail Robinson, 1830.** 3 frames.
Principal Correspondents: James Robinson; Abigail Robinson.
- 0912 **Robinson, Thomas—Letters to John Morton, 1801–1804.** 28 frames.
Major Topics: Ships and shipping; quitclaim deed to property; claim of Loyalists and other British creditors.
Principal Correspondents: Thomas Robinson; John Morton.

Reel 6

Robinson Papers cont.

- 0001 **Robinson, Thomas—Letters to John Morton, 1805–1810.** 21 frames.
Major Topics: Business and industry; ships and shipping.
Principal Correspondents: Thomas Robinson; John Morton.
- 0022 **Robinson, Thomas—Letters to John Morton, 1794–1801.** 20 frames.
Major Topic: Passage and prosecution of law abolishing the slave trade.
Principal Correspondents: Thomas Robinson; John Morton.
- 0042 **Robinson, Thomas—Letters to Mary Robinson Morton, 1794–1815.** 23 frames.
Major Topic: Violation of law abolishing the slave trade.
Principal Correspondents: Thomas Robinson; Mary Robinson Morton.
- 0065 **Robinson, William T.—Letter to Mary Robinson Morton (sister), 1820.** 4 frames.
Principal Correspondents: William T. Robinson; Mary Robinson Morton.
- 0069 **Rotch, William, Jr.—Letter to Deborah Fisher Wharton, 20 April 1845.** 3 frames.
Principal Correspondents: William Rotch Jr.; Deborah Fisher Wharton.
- 0072 **Wanton Family Genealogy, [1762 and Undated].** 23 frames.
Major Topic: Edward Wanton.
- 0095 **Wanton Family, Genealogy and Miscellaneous, [1878–1902, 1939–1944, and Undated].** 108 frames.
Major Topic: Edward Wanton.
- 0203 **Welby Family Genealogy, [Undated].** 2 frames.
- 0205 **Wharton, William—Pamphlet, “The Great Audit,” 1802.** 12 frames.
- 0217 **Waterhouse, Daniel—Letter to Daniel B. Smith, [1817].** 2 frames.
Principal Correspondents: Daniel Waterhouse; Daniel B. Smith.
- 0219 **Aplin, Joseph—Letter to Polly Robinson, 21 January 1781.** 2 frames.
Principal Correspondents: Joseph Aplin; Polly Robinson.
- 0221 **Bower, Benjamin & John—Invoice, 1771.** 4 frames.
- 0225 **Case, Nathan—Descendants, [Undated].** 6 frames.
- 0231 **Collins, Deborah—Will, 23 December 1819.** 3 frames.

Frame No.

- 0234 **Cooper, Hannah—Will, 27 December 1753.** 4 frames.
- 0238 **Crebbin, William—Certificates of Births and Marriages, [1710–1736].** 2 frames.
- 0240 **Cubbon, Thomas—[Certificate, 1792].** 2 frames.
- 0242 **Fisher Family Deaths during 1793.** 4 frames.
- 0246 **Fisher, Deborah—Writing Exercise Book, Philadelphia, 1807.** 24 frames.
- 0270 **Fisher, Esther, [ca. 1780].** 13 frames.
Major Topic: Joshua Fisher.
- 0283 **Fisher, Esther, 1734–1798.** 6 frames.
Principal Correspondent: Esther Fisher.
- 0289 **Fisher, Esther, 1734–1795.** 19 frames.
- 0308 **Fisher, Esther, 1734–1795.** 9 frames.
Major Topic: Wills and estates.
- 0317 **Fisher, Hannah Rodman—Diary, 1794–1795.** 26 frames.
- 0343 **Fisher, Joseph—Letter to Joshua Fisher, 25 March 1758.** 3 frames.
Major Topic: Wills and estates.
Principal Correspondents: Joseph Fisher; Joshua Fisher.
- 0346 **Fisher, Joshua—Power of Attorney, 1743; Certification, 1746.** 3 frames.
- 0349 **Fisher, Joshua—Memorial Concerning his Wife, [1772].** 3 frames.
- 0352 **Fisher, Joshua—Expressions to His Son, 8 November 1782.** 2 frames.
Principal Correspondent: Joshua Fisher.
- 0354 **Fisher, Joshua—Division of Estate, [Undated].** 3 frames.
- 0357 **Fisher, Joshua, [1800].** 5 frames.
- 0362 **Fisher, Miers, Jr., 1786–1813.** 4 frames.
Principal Correspondent: Miers Fisher.
- 0366 **Fisher, Miers, Jr., 1786–1813.** 9 frames.
Major Topic: Death of Miers Fisher.
- 0375 **Fisher, Sally, 1759–1789.** 4 frames.
Principal Correspondent: Sally Fisher.
- 0379 **Fisher, Samuel R., 1782.** 3 frames.
Principal Correspondent: Samuel R. Fisher.
- 0382 **Fisher, Samuel Rowland—Letter to Samuel Rodman, 25 March 1794.** 4 frames.
Principal Correspondents: Samuel Rowland Fisher; Samuel Rodman.
- 0386 **Fisher, Samuel—Letters to His Father, 1767–1796.** 64 frames.
Major Topics: Financing of North American regiments during American Revolution; relations with Indians; ships and shipping.
Principal Correspondent: Samuel Fisher.
- 0450 **Fisher, Thomas (& Miers)—Letters to Samuel R. Fisher, 1793.** 13 frames.
Major Topic: Indenture of black servant.
Principal Correspondents: Thomas Fisher; Samuel R. Fisher.
- 0463 **Hazard Family Genealogy—by Anna Wharton Wood, 1945 and Undated.** 14 frames.
Major Topic: Wellesley College president Caroline Hazard.
- 0477 **Heathcote, Caleb—Letter to Benjamin Newberry, Newport, 1695.** 4 frames.
Major Topic: Apprenticeship of Thomas Richardson.
Principal Correspondents: Caleb Heathcote; Benjamin Newberry.
- 0481 **Hill, Richard, Jr.—Will, 1755.** 6 frames.
- 0487 **Hill, Thomas, [Undated].** 13 frames.
Major Topic: Burial lots in Waltham, Massachusetts.
- 0500 **Hoar, Sherman—The Ripley School, [Undated].** 12 frames.
- 0512 **Hoover, Herbert—Letter to Esther Morton Smith, [10 July 1931].** 2 frames.
Principal Correspondents: Herbert Hoover; Esther Morton Smith.

- 0514 **Howell, Anna Hazen, [1937].** 5 frames.
Major Topic: Biography.
- 0519 **Latham, Mrs. A. W.—[Letter by William Wharton Smith, Undated].** 7 frames.
Major Topic: Civil War.
Principal Correspondent: William Wharton Smith.
- 0526 **Merchants Trading to Pennsylvania, 1770.** 2 frames.
Major Topic: Importation of goods from Great Britain.
- 0528 **Moore, Hannah—Codicil to Will, 10 January 1787.** 4 frames.
- 0532 **Letter (poem) to Abigail Robinson, August 1778.** 3 frames.
Major Topic: Poetry.
Principal Correspondent: Abigail Robinson.
- 0535 **Morton, John, Jr.—Letters to His Father, 1793.** 8 frames.
Major Topic: Disease in Philadelphia, Pennsylvania.
Principal Correspondents: John Morton Jr.; John Morton.
- 0543 **Morton, John—Letter to Molly Morton, 20 September 1819.** 2 frames.
Major Topic: Disease in Newport, Rhode Island, and other cities.
Principal Correspondents: John Morton; Mary Robinson Morton.
- 0545 **Morton, Mary [R.]—Letter, 22 March 1814.** 4 frames.
Principal Correspondent: Mary Robinson Morton.
- 0549 **Morton, Mary R.—Letters to Esther Morton, 1819.** 14 frames.
Principal Correspondents: Mary Robinson Morton; Esther Morton.
- 0563 **Morton, Mary R.—Letters to John Morton, 1818–1819.** 21 frames.
Principal Correspondents: Mary Robinson Morton; John Morton.
- 0584 **Morton, Mary R.—Letters to Abigail Robinson (sister), 1818–1819.** 62 frames.
Major Topics: Disease in Newport, Rhode Island, and Philadelphia, Pennsylvania; Yearly meeting School.
Principal Correspondents: Mary Robinson Morton; Abigail Robinson.
- 0646 **Morton, Mary Robinson—Letter to William Robinson, 7 January 1796.** 4 frames.
Principal Correspondent: Mary Robinson Morton.
- 0650 **Morton, Mary Robinson—Letters, 1818–1819.** 57 frames.
Major Topic: Property in Maryland.
Principal Correspondent: Mary Robinson Morton.
- 0707 **Raper, Abigail—Will, 28 October 1763.** 3 frames.
- 0710 **Raper, Caleb—Will, 25 July 1746.** 3 frames.
- 0713 **Raper, Joshua—Will, August 1746.** 2 frames.
- 0715 **Raper, Joshua—Probate, 13 August 1760.** 4 frames.
- 0719 **Robinson, Abigail—Letters to Mary Robinson Morton (sister), 1819.** 27 frames.
Principal Correspondents: Abigail Robinson; Mary Robinson Morton.
- 0746 **Robinson, Abigail—Letters to Her Brother, 1819.** 13 frames.
Principal Correspondent: Abigail Robinson.
- 0759 **Robinson, Thomas Richardson—Genealogy, [Undated].** 9 frames.
- 0768 **Robinson, William T.—Letters to His Daughter, 1826–1827.** 10 frames.
Principal Correspondent: William T. Robinson.
- 0778 **Descendants of Samuel Rodman and Elizabeth Rotch, [Undated].** 18 frames.
- 0796 **Rodman, Samuel—Letter, 1791.** 3 frames.
Principal Correspondent: Samuel Rodman.
- 0799 **Rotch Family—Letters, [1795–1847].** 57 frames.
Major Topic: Remedies.
- 0856 **Rodman, Sarah—Diary and Account of Yellow Fever in Philadelphia, [1782 and 1793].** 34 frames.

Reel 7

Robinson Papers cont.

- 0001 **Rotch Family File Gathered by Anna [Wharton Smith] Wood, [1929 and Undated].** 19 frames.
Principal Correspondent: Anna Wharton Wood.
- 0020 **Rotch, Charity Rodman—Will, 11 July 1824.** 6 frames.
- 0026 **Williams, Mary—Letter, [1838].** 5 frames.
Major Topic: Scholars at Haverford College.
Principal Correspondent: Mary Williams.
- 0031 **Waltham Historical Society—“Charles F. Stone: A Memoir,” 20 May 1941.** 13 frames.
Major Topic: Waltham, Massachusetts.
- 0044 **Scott Family and Thayer Family—Genealogies, [Undated].** 22 frames.
- 0066 **Wanton Family Genealogy by Anna Wharton [Smith] Wood, [1944 and Undated].** 13 frames.
Principal Correspondent: Anna Wharton Wood.
- 0079 **Wharton, William—Letter, 24 November 1819.** 4 frames.
Major Topic: Wharton family.
Principal Correspondent: William Wharton.
- 0083 **Wharton, Deborah F.—Notebook, [Undated].** 37 frames.
Major Topic: Redwood, Wharton, Fisher, and Rodman families.
- 0120 **Wood, Anna Wharton—An Account of Visit of Deborah Fisher Wharton (1795–1888) to Nebraska in 1873.** 7 frames.
Major Topic: Native Americans.
- 0127 **Wharton, Esther—Account of Newport, Rhode Island, [Undated].** 14 frames.
Major Topic: Newport, Rhode Island.
- 0141 **[Wharton Family Papers, 1884–1927].** 99 frames.
Major Topics: Swarthmore College; Joseph Wharton; Mary Vining; Fisher family; poetry.
Principal Correspondent: Anna Wharton Wood.
- 0240 **Wharton Family, [Undated].** 6 frames.
- 0246 **[Sarah Logan, 1891].** 26 frames.
Major Topic: Sarah Logan Wister.
- 0272 **[Account of Samuel Rowland Fisher, 1931–1933 and Undated].** 27 frames.
Major Topic: Samuel Rowland Fisher.
- 0299 **Miscellaneous Letters and Notes, [1898–1943].** 139 frames.
Principal Correspondent: Esther Morton.
- 0438 **[Anna Wharton Wood, Miscellaneous, 1925–1943].** 28 frames.
Principal Correspondent: Anna Wharton Wood.
- 0466 **Robinson Family Papers, [1943–1959 and Undated].** 31 frames.
- 0497 **Miscellaneous Family Papers, [1803–1933 and Undated].** 44 frames.
Major Topics: Tomb of the Unknown Soldier War Memorial; Arthur Howell; poetry; Germantown Friends School; Thomas Robinson.
- 0541 **[Wood Family Papers, 1925–1930 and Undated].** 58 frames.
Principal Correspondent: Anna Wharton Wood.
- 0599 **Wood, Anna Wharton—[Miscellaneous, 1934–1940 and Undated].** 36 frames.
Major Topics: Hammer mills; glass and glass industry.
- 0635 **Letter, 20 January 1764.** 2 frames.
- 0637 **Wood, Anna Wharton—[Miscellaneous, 1943 and Undated].** 16 frames.
- 0653 **Robinson, Abigail—Will [and] Inventory of Thomas Robinson's Estate, [1751–1835].** 17 frames.
- 0670 **Copies of Wills of Edward Wanton and Joseph Wanton (son), [1716 and 1754].** 28 frames.
- 0698 **Richard Hill, Jr.—Will [Undated].** 11 frames.

Frame No.

- 0709 **[Cargo Lists, 1741]**. 16 frames.
Major Topic: Ships and shipping.
- 0725 **Richardson, [Thomas]—Will, [1761]**. 5 frames.
- 0730 **Robinson, Abigail—Will and Account Book, [1834]**. 182 frames.

Reel 8

Robinson Papers cont.

- 0001 **[Abigail Robinson]—Receipt Book, 1760–1770 and Undated**. 91 frames.
- 0092 **Hill Bissets & Co. of Madeira—Correspondence with Henry Hill of Philadelphia, 14 May 1791–9 July 1798**. 144 frames.
Major Topic: Ships and shipping.
Principal Correspondent: Henry Hill.
- 0236 **Robinson Family Letters, 1787–1793**. 88 frames.
Major Topics: Quaker convention; diseases and disorders.
Principal Correspondents: John Gardiner; Mary Robinson; Rebecca Jones.
- 0324 **Accounts and Ledgers—Thomas Robinson, Matthew Borden, William Borden, and William Richardson, 1753–1761**. 20 frames.
- 0344 **Samuel Rowland Fisher in England and Ireland—Letters to Thomas and Miers Fisher in Philadelphia, January 1767–May 1768**. 54 frames.
Major Topic: Ships and shipping.
Principal Correspondents: Samuel Rowland Fisher; Thomas Fisher; Miers Fisher.
- 0398 **Membership of Charles Moore in American Philosophical Society, 20 January 1786**. 2 frames.
- 0400 **Miscellaneous Family Documents, [1712–1790]**. 10 frames.
Major Topics: Property; ships and shipping.
Principal Correspondents: Joshua Fisher; Mary Robinson; Rebecca Jones; Samuel Rowland Fisher.
- 0410 **Samuel Rowland Fisher—Letters to his Brothers, Thomas and Miers, in Philadelphia, 1783**. 27 frames.
Major Topic: Settlement of accounts.
Principal Correspondents: Samuel Rowland Fisher; Thomas Fisher; Miers Fisher.
- 0437 **Letters—Samuel Fisher to Joshua Fisher & Sons, October 1773; Hetty Fisher to Samuel R. Fisher at Winchester, November 1777**. 8 frames.
Principal Correspondents: Samuel Rowland Fisher; Hetty Fisher.
- 0445 **Allinson, Mary, [29 June 1829]**. 5 frames.
Principal Correspondents: Mary Allinson; Abigail Robinson.
- 0450 **Anna Almy to Abigail Robinson—Letters, 1807–1812**. 16 frames.
Principal Correspondents: Anna Almy; Abigail Robinson.
- 0466 **Bancroft, Deborah, [Undated]**. 3 frames.
Major Topic: Poetry.
- 0469 **Barker, A., [29 June 1829]**. 4 frames.
Principal Correspondent: A. Barker.
- 0473 **Bowne, Amy Robinson, [1794–1795]**. 22 frames.
Major Topics: Breast cancer; smallpox.
Principal Correspondent: Amy Robinson Bowne.
- 0495 **Arnold, S. R., [1850–1852]**. 10 frames.
Principal Correspondent: S. R. Arnold.
- 0505 **B., A. M., [1806]**. 10 frames.
Major Topic: Poetry.

Frame No.

- 0515 **Brown, Dorcas, [1808–1822].** 11 frames.
Major Topic: Deaths.
Principal Correspondent: Dorcas Brown.
- 0526 **Brown, Nancy S., [Undated].** 2 frames.
Principal Correspondent: Nancy S. Brown.
- 0528 **Chase, Ann A., [1841–1858].** 31 frames.
Principal Correspondents: Ann A. Chase; Esther Morton Smith.
- 0559 **Clarke, Lewis L., [5 August 1811].** 4 frames.
Principal Correspondent: Lewis L. Clarke.
- 0563 **Cocartt, Jane, [6 August 1773].** 3 frames.
Major Topic: Woman-owned business.
- 0566 **Coggeshall, Elizabeth, [31 December 1826].** 5 frames.
Major Topic: Apprenticeship of son.
Principal Correspondents: Elizabeth Coggeshall; Mary Robinson Morton.
- 0571 **Cumberland, [M.], [Undated].** 2 frames.
Major Topic: Poetry.
- 0573 **Papers of the Historical Society of Delaware, [20 March 1899].** 31 frames.
Major Topics: Gunning Bedford Jr.; John Fisher; George P. Fisher.
- 0604 **Durand, E., [28 August 1868].** 5 frames.
Major Topics: Botany; Paris, France.
Principal Correspondents: E. Durand; D. B. Smith.
- 0609 **Ellery, Mehitable, [18 January 1784].** 3 frames.
Principal Correspondent: Mehitable Ellery.
- 0612 **Evans, William, [1 July 1824].** 3 frames.
Principal Correspondent: William Evans.
- 0615 **Falconer, Nathaniel, [16 November 1779].** 2 frames.
Major Topic: Travel by ship.
Principal Correspondent: Nathaniel Falconer.
- 0617 **Ferris, A. M., [24 October 1875].** 2 frames.
Major Topic: Poetry.
- 0619 **Fisher, Deborah, [August 1816].** 29 frames.
Major Topic: Travel.
Principal Correspondent: Deborah Fisher.
- 0648 **Fisher, Deborah, [23 June 1804].** 34 frames.
Major Topic: Poetry.
- 0682 **Fisher, Esther, [1793].** 2 frames.
Principal Correspondent: Esther Fisher.
- 0684 **Fisher, Hannah Rodman, [1793–1817].** 67 frames.
Major Topics: Travel through Connecticut; presidential visit to Boston, Massachusetts; obituary and biography.
Principal Correspondent: Hannah Rodman Fisher.
- 0751 **Fisher, Hannah Rodman—Diaries, [1783–1813].** 94 frames.
Major Topic: Quaker meetings.
- 0845 **Fisher, Hannah Rodman—Account of Sarah Rodman’s Death, 1793.** 9 frames.
Major Topic: Sarah Rodman.
- 0854 **Fisher, Jabez Maud—Typscripts of Letters from England, [1775].** 21 frames.
Major Topics: Yearly Meeting of Quakers; American Revolution; ships and shipping.
Principal Correspondent: Jabez Maud Fisher.
- 0875 **Fisher, James, [1745].** 3 frames.
Major Topic: Debt.

Frame No.

- 0878 **Fisher, Jabez Maud, [1773–1779].** 47 frames.
Major Topics: Canada; ships and shipping; Quebec Act; Yearly Meeting of Quakers;
Declaration of Independence.
Principal Correspondent: Jabez Maud Fisher.

Reel 9

Robinson Papers cont.

- 0001 **Fisher, Joshua—Documents on Slave Manumission, [1776].** 10 frames.
Major Topics: Slavery; manumission.
Principal Correspondent: Joshua Fisher.
- 0011 **Fisher, Joshua, [1773–1777].** 14 frames.
Major Topic: Slavery.
Principal Correspondent: Joshua Fisher.
- 0025 **[Fisher, Joshua, 1935–1936].** 14 frames.
Major Topics: Maps; crime and criminals; Fisher family.
Principal Correspondent: Anna Wharton Wood.
- 0039 **Fisher, Miers, [1793].** 5 frames.
Major Topic: Ships and shipping.
Principal Correspondent: Miers Fisher.
- 0044 **Fisher, Samuel Rowland, [1792–1817].** 43 frames.
Principal Correspondent: Samuel Rowland Fisher.
- 0087 **Ford Curtoys & Company, [19 March 1772].** 3 frames.
Major Topic: Shipment of wheat.
- 0090 **Fortifications of Narragansett Bay, [1744–1796 and Undated].** 17 frames.
Major Topics: Fortifications; burning of Jamestown, Rhode Island; Connecticut.
Principal Correspondent: Anna Wharton Wood.
- 0107 **Foulke, Elizabeth, [1813].** 5 frames.
Principal Correspondent: Elizabeth Foulke.
- 0112 **Fragments, [1800–1877].** 93 frames.
Major Topics: Trip to Nebraska; Otoe Indians; mineral springs; Alexander, emperor of Russia.
- 0205 **Cover Letter and Fragments, [1781–1800 and Undated].** 96 frames.
Major Topics: Austria, Prussia, and Russia treaty; poetry; Indian cure for cancer.
Principal Correspondents: Count de Verigennes; George Washington.
- 0301 **Genealogical Notes, [1890, 1926–1940, and Undated].** 125 frames.
Major Topic: Williams, Wharton, Fisher, Redwood, Robinson, Rodman, and other families.
Principal Correspondents: Anna Wharton Wood; Esther Morton Smith.
- 0426 **Gilpin, Josiah, [1792].** 4 frames.
Principal Correspondent: Josiah Gilpin.
- 0430 **Eliza H. [1841–1842].** 6 frames.
Principal Correspondent: Esther Morton Smith.
- 0436 **Hallowell, Benjamin, [Undated].** 5 frames.
Major Topic: Poetry.
- 0441 **Handy, Francis, [1813].** 2 frames.
Principal Correspondent: Francis Handy.
- 0443 **Harris, Joseph—Letters to Abigail Robinson, 1821–1822.** 12 frames.
Principal Correspondents: Joseph Harris; Abigail Robinson.
- 0455 **Haverford School, [1846].** 3 frames.
- 0458 **Hazard, Anna, [1799].** 2 frames.
Principal Correspondent: Anna Hazard.

Frame No.

- 0460 **Jaffray, Rob[ert], [18 October 1771].** 2 frames.
Principal Correspondent: Rob Jaffray.
- 0462 **Jenkins, Anna A., [1827].** 5 frames.
Principal Correspondents: Anna A. Jenkins; Mary Robinson Morton.
- 0467 **King, Jane, [1806].** 3 frames.
Principal Correspondent: Jane King.
- 0470 **Legal Documents, [1750–1813].** 19 frames.
Major Topics: Colony of Rhode Island; Sugar Act; trade; sugar and sugar industry; rice and rice industry; liquor and liquor industry; indentured servants.
- 0489 **[Poetry], [1821].** 2 frames.
Major Topic: Poetry.
- 0491 **Marriages, [1690–1859].** 4 frames.
- 0495 **Mason, Susan, [4 May 1816].** 2 frames.
Principal Correspondent: Susan Mason.
- 0497 **Mifflin, Lloyd, [4 November 1878].** 3 frames.
Major Topic: Poetry.
- 0500 **Minturn, A. R., [20 March 1881].** 4 frames.
Major Topic: Photography.
Principal Correspondent: A. R. Minturn.
- 0504 **Minturn, Mary, [1 December 1827].** 2 frames.
Principal Correspondent: Mary Minturn.
- 0506 **Minturn, Sally, [1928].** 3 frames.
Principal Correspondent: Sally Minturn.
- 0509 **Miscellaneous Printed Clippings and Extracts, [1852, 1906, 1938, and Undated].** 17 frames.
Major Topics: Astronomy and meteorology; Dr. Elijah Barratt; Joseph Wharton.
- 0526 **Miscellaneous, [1939–1943 and Undated].** 36 frames.
Major Topics: New Bedford, Massachusetts, whaling fleet; New Bedford Meeting House (photograph); Collins Castle; poetry; Redwood, Rodman, and Fisher family crests.
Principal Correspondent: Anna Wharton Wood.
- 0562 **Moore, Asa, [1807].** 11 frames.
Principal Correspondent: Asa Moore.
- 0573 **Morris, Anna W., [20 February 1934].** 3 frames.
Major Topic: Fisher and Wharton families.
Principal Correspondent: Anna W. Morris.
- 0576 **[Morris, Anthony, 2 June 1791].** 4 frames.
Principal Correspondent: Anthony Morris.
- 0580 **Morton, Esther (see also Smith, Esther Morton), [1816 and Undated].** 7 frames.
Major Topics: Emperor Alexander of Russia; James Henry Leigh Hunt memoir.
Principal Correspondent: Esther Morton Smith.
- 0587 **[Morton, John], 1810–1825.** 35 frames.
Major Topic: Diseases and disorders.
Principal Correspondent: John Morton Jr.
- 0622 **Morton, Margaret, [1821].** 4 frames.
Principal Correspondent: Margaret Morton.
- 0626 **Morton, Mary Robinson, [1813–1820].** 40 frames.
Principal Correspondent: Mary Robinson Morton.
- 0666 **Morton, Robert, [1846].** 5 frames.
Principal Correspondent: Robert Morton.
- 0671 **NAACP [National Association for the Advancement of Colored People], [1944].** 9 frames.
Major Topics: Walter F. White; Costigan-Wagner antilynching bill; NAACP.
Principal Correspondents: Anna Wharton Wood; Mary White Ovington.

Frame No.

- 0680 **Parke, James Pemberton, [1813].** 4 frames.
Principal Correspondent: James Pemberton Parke.
- 0684 **Parr & Bulheley, [1779].** 2 frames.
Major Topics: Tea Act; trade between England and American colonies.
- 0686 **Raper, Joshua, [1761].** 2 frames.
Major Topic: Testimony regarding Joshua Raper.
- 0688 **Poetry, [1783–1815 and Undated].** 116 frames.
- 0804 **Poetry, [1777–1830 and Undated].** 60 frames.

Reel 10

Robinson Papers cont.

- 0001 **Receipts, Invoices, and Lists, 1723–1833.** 22 frames.
- 0023 **[Redwood, Abraham, 1782–1785].** 4 frames.
Principal Correspondents: Abraham Redwood; William Redwood.
- 0027 **[Redwood, Hannah, 1782–1783].** 8 frames.
Major Topic: Apprenticeship with merchant.
Principal Correspondent: Hannah Redwood.
- 0035 **[Redwood, William, 1811–1813].** 5 frames.
Principal Correspondent: William Redwood.
- 0040 **Redwood Library, Newport, 1934.** 2 frames.
Major Topic: Gift of Redwood coat of arms.
- 0042 **M. G. Richardson, [1854].** 3 frames.
Major Topic: Poetry.
- 0045 **[Robinson, Abigail], 1805–1828.** 14 frames.
Major Topic: Poetry.
Principal Correspondent: Abigail Robinson.
- 0059 **Robinson, Amy (see also Bowne, Amy Robinson), [1789–1792].** 38 frames.
Principal Correspondent: Amy Robinson Bowne.
- 0097 **Robinson, Ann, [Undated].** 3 frames.
Principal Correspondent: Ann Robinson.
- 0100 **Robinson, Attmore, [1881–1882].** 6 frames.
Principal Correspondent: Attmore Robinson.
- 0106 **Robinson, M. A., [1813].** 3 frames.
Principal Correspondents: M. A. Robinson; Mary Robinson Morton.
- 0109 **[Robinson, Mary] (see also Thomas, Mary Morton), [1791].** 2 frames.
Principal Correspondent: Mary Robinson.
- 0111 **Robinson, Sarah, [1785].** 4 frames.
Principal Correspondent: Sarah Robinson.
- 0115 **Robinson, R. T., [1828].** 2 frames.
- 0117 **Robinson, Thomas, [1778].** 3 frames.
Major Topics: British army in Philadelphia; American Revolution.
Principal Correspondent: Thomas Robinson.
- 0120 **Robinson, William T., [1821–1828].** 9 frames.
Principal Correspondent: William T. Robinson.
- 0129 **Robinson, Elizabeth, [Undated].** 2 frames.
- 0131 **Rodman, E., [1800–1803].** 12 frames.
Principal Correspondent: E. Rodman.
- 0143 **Rodman, Hannah (see also Fisher, Hannah Rodman), [Undated].** 3 frames.
Major Topic: Poetry.

Frame No.

- 0146 **Rodman, Sarah, [1792].** 4 frames.
Principal Correspondent: Sarah Rodman.
- 0150 **Rodman, Sarah—Extracts from Her Writings, in Samuel Rowland Fisher's Hand, [1780–1793].** 17 frames.
- 0167 **Rodman, Samuel, [1797].** 38 frames.
Major Topic: Nantucket, Massachusetts.
Principal Correspondent: Samuel Rodman.
- 0205 **Rodman Family Genealogy, [1930–1933 and Undated].** 35 frames.
Principal Correspondents: Anna Wharton Wood; Catherine Rodman Waller.
- 0240 **Rodman, Mary, [1792].** 8 frames.
Major Topic: Smallpox in Boston, Massachusetts.
Principal Correspondent: Mary Rodman.
- 0248 **John Rodney—Documents on Manumission of Slaves, [1776].** 4 frames.
Major Topic: Manumission.
Principal Correspondent: John Rodney.
- 0252 **Rotch, Charity, [1798].** 4 frames.
Principal Correspondent: Charity Rotch.
- 0256 **Rotch, Eliza (Wife of William Rotch, Jr.), [1798 and 1817].** 8 frames.
Principal Correspondent: Eliza Rotch.
- 0264 **Rotch, Lydia, [1797–1804].** 7 frames.
Principal Correspondent: Lydia Rotch.
- 0271 **Rotch, Thomas, [1792].** 4 frames.
Major Topic: Fire on board ship.
Principal Correspondent: Thomas Rotch.
- 0275 **Rotch, William, Jr., [1798–1844].** 10 frames.
Major Topic: Railroad to be built at New Bedford, Massachusetts.
Principal Correspondent: William Rotch Jr.
- 0285 **Rotch, William, [1797–1812].** 7 frames.
Major Topic: Yellow fever.
Principal Correspondent: William Rotch.
- 0292 **[Rowland, Isaiah, 1776–1777].** 11 frames.
Major Topic: Slavery.
Principal Correspondent: Isaiah Rowland.
- 0303 **Russell, Susan S., [1814].** 4 frames.
Principal Correspondent: Susan S. Russell.
- 0307 **Savery, William, [Undated].** 7 frames.
Major Topic: Quakers.
- 0314 **Sharpless, Blakey, [Undated].** 2 frames.
Major Topic: Botany.
Principal Correspondent: Blakey Sharpless.
- 0316 **Smith, Benjamin Raper—Letters of Consolation, [1904].** 35 frames.
Principal Correspondent: Esther Morton Smith.
- 0351 **[Smith, Benjamin Raper, 1844, 1860, and Undated].** 8 frames.
Major Topic: Railroad through Rhode Island.
Principal Correspondent: Benjamin Raper Smith.
- 0359 **Smith, Benjamin Raper—Page Proofs of Anna Wharton Wood's Book, Published April 1943.** 54 frames.
- 0413 **[Pemberton, James, 1792].** 2 frames.
- 0415 **John Penn Furniture, [1900s].** 12 frames.
Major Topic: Furniture.
- 0427 **Perry, Sarah, [1824].** 2 frames.

Frame No.

- Principal Correspondent:* Sarah Perry.
- 0429 **Letters about [Benjamin Raper Smith] Book, 1945.** 55 frames.
Principal Correspondent: Anna Wharton Wood.
- 0484 **Smith, Daniel B., [1809].** 3 frames.
Major Topic: American Literary Association.
- 0487 **Smith, Esther Morton, [1817–1860].** 46 frames.
Major Topic: Funeral sermon.
Principal Correspondent: Esther Morton Smith.
- 0533 **Thomas, Evan, [1816].** 2 frames.
Principal Correspondent: Evan Thomas.
- 0535 **Thomas, Mary Robinson, [1794–1813].** 7 frames.
Principal Correspondent: Mary Robinson Thomas.
- 0542 **[Thornton, E., 1793].** 3 frames.
Major Topic: Death of Sarah Rodman (poetry).
- 0545 **Till-Adams, William, [1772].** 2 frames.
Major Topic: Shipment of shoes.
Principal Correspondent: William Till-Adams.
- 0547 **Wagstaffe, Thomas, [1786].** 2 frames.
Principal Correspondent: Thomas Wagstaffe.
- 0549 **Wharton, Anna—Estate Settlement, March–August 1944.** 38 frames.
Principal Correspondent: Anna Wharton Wood.
- 0587 **[Wharton, Charles]—Correspondence, [1809–1817].** 3 frames.
Principal Correspondent: Charles Wharton.
- 0590 **Wharton, Deborah Fisher, [1817–1877 and 1930].** 56 frames.
Major Topics: Hannah Fisher; Lucy Hayes' exclusion of wine or spirits from presidential inaugural ceremonies and receptions; remarks to President Hayes on behalf of Indians; diseases and disorders; Boston, Massachusetts; Trenton bridge; notable women of Pennsylvania.
Principal Correspondent: Deborah Fisher Wharton.
- 0646 **Wharton, Joseph, [1875].** 4 frames.
Major Topic: Poetry.
- 0650 **Wharton, Joseph, Jr., [1762–1778].** 21 frames.
Major Topics: Shipments of flour and bread; property in New York colony; wills and estates; falling market for wheat in Great Britain.
Principal Correspondent: Joseph Wharton Jr.
- 0671 **Wharton Smith, H. L., [1860].** 4 frames.
Principal Correspondent: H. L. Wharton Smith.
- 0675 **[Wharton, W. Rodman, 1938].** 3 frames.
Major Topic: Fisher family genealogy.
Principal Correspondent: W. Rodman Wharton.
- 0678 **Whitall, H., [1813].** 3 frames.
Principal Correspondent: H. Whitall.
- 0681 **[Wickham, Sarah, 1813–1841].** 9 frames.
Principal Correspondent: Sarah Wickham.
- 0690 **[Williams, Mary, 1823–1858].** 10 frames.
Principal Correspondent: Mary Williams.
- 0700 **Ship Insurance Policies, 1772.** 2 frames.

- 0702 [Wood, Anna Wharton Smith—Miscellaneous, 1757–1944]. 134 frames.
Major Topics: Apprenticeships; Robinson family; opposition to slavery; Quakers; U.S. armed forces in World War II; memorial presented to king of England regarding liberty of conscience; photograph of Lydia Fisher Warner; survey of U.S. Indian conditions; L'Enfant Plaza, Washington, D.C.; travel to England.
Principal Correspondents: Esther Robinson; Mary Robinson Morton; Thomas R. Robinson; Esther Smith; Helen Minturn Seymour; Anna Wharton Wood Smith; Thomas Richardson.

Reel 11

Robinson Papers cont.

- 0001 **Brown, Moses, 1738–1836.** 3 frames.
Principal Correspondent: Moses Brown.
- 0004 **Brown, Moses—Letter to Abigail Robinson, 20 May 1834.** 3 frames.
Major Topic: Smallpox in Providence, Rhode Island.
Principal Correspondents: Moses Brown; Abigail Robinson.
- 0007 **Davidson, George—Letters, [1868–1878].** 106 frames.
Major Topics: Science and technology; India; Japan.
Principal Correspondent: George Davidson.
- 0113 **Friends Philadelphia Yearly Meeting—Conference of the Cherokee Indians, [1792].** 8 frames.
- 0121 **Moore, Charles—Diploma, Edinburgh, 1752.** 3 frames.
- 0124 **Morton, Robert—Letters, [1830–1838].** 32 frames.
Major Topics: Remedies; diseases and disorders.
Principal Correspondent: Robert Morton.
- 0156 **Pinnington, Edward, [1789].** 2 frames.
Major Topic: Property in New Jersey.
Principal Correspondent: Edward Pinnington.
- 0158 **Robinson, Abigail—Letters to Esther Morton Smith, 1830–1833.** 23 frames.
Principal Correspondents: Abigail Robinson; Esther Morton Smith.
- 0181 **Robinson, William T.—Letters to Abigail Robinson (Newport), [1834].** 9 frames.
Principal Correspondents: William T. Robinson; Abigail Robinson.
- 0190 **Robinson, William T.—Letters to Esther Morton Smith, 1831.** 3 frames.
Principal Correspondents: William T. Robinson; Esther Morton Smith.
- 0193 **Smith, Benjamin—Letters to Uncle George, 1792.** 2 frames.
Major Topic: Conferences with Cherokee Indians.
Principal Correspondent: Benjamin Smith.
- 0195 **Smith, Benjamin—Letters, 1776 and 1792–1793.** 9 frames.
Major Topic: Indentured servants.
Principal Correspondent: Benjamin Smith.
- 0204 **Smith, Benjamin R.—Letters to Esther Morton Smith (mother), 1838–1864.** 23 frames.
Major Topic: Family and social life.
Principal Correspondents: Benjamin R. Smith; Esther Morton Smith.
- 0227 **Smith, Benjamin R.—Letters to Daniel B. Smith (father), 1865–1876.** 122 frames.
Major Topics: Newport, Rhode Island; Florida.
Principal Correspondents: Benjamin R. Smith; Daniel B. Smith.
- 0349 **Smith, Daniel [B., 1771 and 1784].** 6 frames.
Major Topics: Burlington, New Jersey, property; contractual obligation.
Principal Correspondent: Daniel B. Smith.
- 0355 **Smith, Daniel B.—Letters, [1824–1883].** 44 frames.
Major Topics: Diseases and disorders; life insurance stock.
Principal Correspondent: Daniel B. Smith.

- 0399 **Smith, Daniel B.—Papers and Letter to Margaret H. Smith, [1811–1834].** 17 frames.
Major Topic: Poetry.
Principal Correspondents: Daniel B. Smith; Margaret H. Smith.
- 0416 **Smith, Esther Morton—Letters to Abigail Kimber, [1822, 1824, and Undated].** 33 frames.
Principal Correspondents: Esther Morton Smith; Abigail Kimber.
- 0449 **Smith, Esther Morton—Letters to Abigail Robinson, [1830–1838].** 40 frames.
Major Topic: Haverford College.
Principal Correspondents: Esther Morton Smith; Abigail Robinson.
- 0489 **Smith, Esther Morton—Letters, [1834–1838 and Undated].** 12 frames.
Principal Correspondent: Esther Morton Smith.
- 0501 **Smith, Mary Morton, [1817–1852].** 22 frames.
Major Topics: Education; Haverford College.
Principal Correspondent: Mary Morton Smith.
- 0523 **Williams, Mary—Letters to Esther Morton Smith (cousin), 1833–1837.** 26 frames.
Major Topics: Childbearing; infant mortality.
Principal Correspondents: Mary Williams; Esther Morton Smith.
- 0549 **[Letters, 1830–1836].** 35 frames.
Major Topics: Poetry; estate of Thomas Richardson.
- 0584 **Miscellaneous Documents, 1828–1845.** 17 frames.
Principal Correspondents: Esther M. Smith; Daniel B. Smith; Abigail Robinson.
- 0601 **Miscellaneous Documents, [1830–1836].** 13 frames.
Principal Correspondents: James Robinson; Daniel B. Smith; Abigail Kimber; Esther Morton; John Morton Smith.
- 0614 **Miscellaneous Robinson Family Documents, [1923–1926].** 12 frames.
Major Topic: Portsmouth, Rhode Island.
Principal Correspondent: Anna Wharton Wood.
- 0626 **Facts for the Laboring Man, [1840].** 51 frames.
- 0677 **Bank of England Investigator’s Office, [1817].** 2 frames.
Major Topic: Forged bank note.
- 0679 **Davidson, George—Note on Indian Culture, 1874.** 3 frames.
Major Topic: Indians of British Columbia.
- 0682 **Fisher, Joshua, 1707–1783—Insurance Form, 1767.** 3 frames.
Major Topic: Ships and shipping.
- 0685 **F., Ann—Letter to Mary Hunter, 1843.** 5 frames.
Principal Correspondent: Mary Hunter.
- 0690 **Hetty (ship).** 6 frames.
Major Topic: Port charges.
- 0696 **Hunter, Anne Fisher—A Newport Romance of 1804 and Various Journals and Letters, [1804, 1828–1836, and 1927].** 116 frames.
Major Topics: William Hunter and Mary Robinson; Newport, Rhode Island, social life; Rio de Janeiro.
Principal Correspondents: Mary Hunter; Eliza Hunter.
- 0812 **Letter with Transcript and Translation, 25 October 1872.** 5 frames.
Major Topics: Rio de Janeiro; *Columbia* (ship).
- 0817 **Kimber, Abby, 1839.** 5 frames.
Major Topic: France.
Principal Correspondent: Abby Kimber.
- 0822 **Morton, Esther—Letters to Anna Kimber, 1809.** 5 frames.
Principal Correspondents: Esther Morton; Anna Kimber.
- 0827 **Morton, Esther—Letters to Anna Kimber, 1818.** 25 frames.
Principal Correspondents: Esther Morton; Anna Kimber.

Reel 12

Robinson Papers cont.

- 0001 **Morton, Esther—Letters to Anna Kimber, 1819.** 18 frames.
Principal Correspondents: Esther Morton; Anna Kimber.
- 0019 **Morton, Esther—Letters to Anna Kimber, 1820.** 28 frames.
Principal Correspondents: Esther Morton; Anna Kimber.
- 0047 **Morton, Esther—Letters to Anna Kimber, 1821.** 36 frames.
Major Topics: Thoughts on Napoleon; Newport, Rhode Island.
Principal Correspondents: Esther Morton; Anna Kimber.
- 0083 **Morton, Esther—Letters to Anna Kimber, 1822.** 50 frames.
Major Topics: Thoughts on Napoleon; chemistry lecture; wedding.
Principal Correspondents: Esther Morton; Anna Kimber.
- 0133 **Morton, Esther—Letters to Anna Kimber, 1823.** 31 frames.
Major Topic: Remedy for sores.
Principal Correspondents: Esther Morton; Anna Kimber.
- 0164 **Morton, Esther—Letters to Anna Kimber, 1824.** 20 frames.
Major Topic: Schools.
Principal Correspondents: Esther Morton; Anna Kimber.
- 0184 **Smith, Esther Morton—Letter to Abby Kimber, 27 December 1835.** 4 frames.
Principal Correspondents: Esther Morton; Abby Kimber.
- 0188 **Morton, Mary Robinson—Note to Thomas Lyman, [Undated].** 3 frames.
Major Topic: Donation of New England Society.
Principal Correspondents: Mary Robinson Morton; Thomas Lyman.
- 0191 **Smith, [M.]—Letter to Daniel B. Smith (brother), 1812.** 3 frames.
Principal Correspondent: Daniel B. Smith.
- 0194 **Smith, D.—Letters to Daniel B. Smith (son), [1808 and Undated].** 23 frames.
Principal Correspondent: Daniel B. Smith.
- 0217 **Smith, Daniel—Letters to Margaret Smith (sister), 1836.** 4 frames.
Major Topic: Death of child.
Principal Correspondent: Daniel Smith.
- 0221 **Smith, Daniel B.—Letters to Mary Morton Smith (daughter), 1845.** 16 frames.
Major Topics: Temperance Reformation in Ireland; Bible Society in London.
Principal Correspondents: Daniel B. Smith; Mary Morton Smith.
- 0237 **Smith, Daniel B.—Miscellaneous Papers, [1814–1854 and Undated].** 64 frames.
Major Topics: Schoolchildren; botany; libraries; poor tax; Haverford College; Gazetteers of the United States; writings of physicians, scientists, and other scholars.
Principal Correspondent: Daniel B. Smith.
- 0301 **Smith, Daniel B.—Miscellaneous Papers, [1810–1846].** 55 frames.
Major Topics: New England Yearly Meeting; education; property; appeal of Quaker disowned by Providence Monthly Meeting.
Principal Correspondent: Daniel B. Smith.
- 0356 **Smith, Esther Morton—Letters to Daniel B. Smith (husband), 1826.** 12 frames.
Major Topics: Children; Haverford College; World Convention of Anti-Slavery; economic conditions in England; Oberlin College; Quakers disowned for noncompliance on the subject of emancipation.
Principal Correspondents: Esther Morton Smith; Daniel B. Smith.
- 0368 **Smith, Daniel B.—Miscellaneous Papers, [1838–1850].** 37 frames.
Principal Correspondent: Daniel B. Smith.
- 0405 **Smith, Esther Morton—Letters to Mary Morton Smith (daughter), [1843 and Undated].** 13 frames.
Principal Correspondents: Esther Morton Smith; Mary Morton Smith.

Frame No.

- 0418 **Smith, Esther Morton—Agreement regarding Porcelain Vessel, 25 December 1845.** 6 frames.
- 0424 **Smith, Esther Morton—Letters to Mary Morton Smith (sister), [Undated].** 7 frames.
Principal Correspondents: Esther Morton Smith; Mary Morton Smith.
- 0431 **Smith, Margaret M.—Letter to Daniel B. Smith, 15 October 1809.** 9 frames.
Principal Correspondents: Margaret M. Smith; Daniel B. Smith.
- 0440 **Smith, Mary Morton—Letters to Daniel B. Smith (father), 1848–1849.** 10 frames.
Principal Correspondents: Mary Morton Smith; Daniel B. Smith.
- 0450 **Smith, Ned—Letters from England, 1944.** 4 frames.
Major Topics: England; World War II.
Principal Correspondent: Ned Smith.
- 0454 **Smith, Anna Wharton—Letters and Miscellaneous Documents, [1936–1962 and Undated].**
314 frames.
Major Topic: Quakers in the armed forces during World War II.
Principal Correspondents: Anna Wharton Smith; Edward Wharton.
- 0768 **Accounts of Deaths, 1777–1792.** 12 frames.
- 0780 **Family Genealogical Record, [1913].** 8 frames.
- 0788 **Fisher, Hannah Rodman—Extracts, 1800.** 3 frames.
- 0791 **Inventory of Furniture for Esther M. Smith, [1939 and 1958].** 26 frames.
- 0817 **Fisher, Hannah—Diary, [1775–1793].** 4 frames.
- 0821 **List of Items in the Robinson House by Mary Williams, [1969].** 2 frames.
- 0823 **Genealogical Notes, [1888–1944 and Undated].** 75 frames.
Principal Correspondent: Anna Wharton Wood.
- 0898 **Haverford School Farm—Apple Trees, [1936].** 4 frames.
Principal Correspondent: Anna Wharton Wood.
- 0902 **Hill, Richard, Jr., [1742].** 2 frames.
- 0904 **La Farge, C. Grant by Oliver La Farge, [1942].** 10 frames.
- 0914 **Legal Documents, [1687–1835].** 16 frames.
Major Topic: Wills and estates.
- 0930 **Lundholm, Eric Mauritz; Lundholm, Theorina, [1906–1940].** 5 frames.
Major Topic: Midwives and midwifery.
- 0935 **Miscellaneous Letters, [1700s, 1880s, and Undated].** 33 frames.
Principal Correspondent: Anna Wharton Wood.

Reel 13

Robinson Papers cont.

- 0001 **Miscellaneous Printed Material, [1929–1944].** 66 frames.
Major Topic: Harvard University.
- 0067 **Moore, Milcah Martha—Will, 1828.** 5 frames.
- 0072 **Morris, Margaret, [Undated].** 3 frames.
Principal Correspondent: Margaret Morris.
- 0075 **Morton, Esther, [1823–1824].** 6 frames.
Major Topic: Smallpox.
Principal Correspondent: Esther Morton.
- 0081 **Morton, Esther, [1825].** 5 frames.
Principal Correspondent: Mary Robinson Morton.
- 0086 **Morton, John, [1826].** 3 frames.
Principal Correspondent: John Morton.
- 0089 **Morton, Mary Robinson, [1823].** 5 frames.
Principal Correspondent: Mary Robinson Morton.

Frame No.

- 0094 **Morton, Mary Robinson—Transcript of Letter to her Brother's Wife, 10 April 1781.** 11 frames.
Principal Correspondent: Mary Robinson Morton.
- 0105 **Murray, Ellen—Aunt Jane's Prayer, [Undated].** 6 frames.
Major Topic: African Americans.
- 0111 **Murray, Elsie—French in Northern Pennsylvania, [1937–1944 and Undated].** 48 frames.
Major Topic: Pioneers.
Principal Correspondents: Elsie Murray; Anna Wharton Wood.
- 0159 **Newspaper Clippings, [1902–1934 and Undated].** 36 frames.
Major Topics: Lexington, Massachusetts; Massachusetts flag etiquette and laws; Quakers.
- 0195 **Newspaper Clippings about the French in Newport, [1929–1937 and Undated].** 22 frames.
Major Topic: Newport, Rhode Island.
- 0217 **Nichols, William S., [1835].** 3 frames.
Major Topic: Wills and estates.
Principal Correspondent: William S. Nichols.
- 0220 **Philosophical Notebook, 1811.** 10 frames.
- 0230 **Raper, Caleb, [1741].** 3 frames.
Principal Correspondent: Caleb Raper.
- 0233 **Receipts, [Undated].** 2 frames.
- 0235 **Robinson, Abigail, [1821–1829].** 25 frames.
Major Topic: Property.
Principal Correspondent: Abigail Robinson.
- 0260 **Robinson, Thomas—Copies of Selected Letters, 1753–1770.** 21 frames.
Major Topics: Slave trade; Newport, Rhode Island; manufacture of spermaceti; apprenticeship of William Robinson; riots and disorders between soldiers and workmen in Boston, Massachusetts; ships and shipping.
Principal Correspondent: Thomas Robinson.
- 0281 **Robinson, Thomas—Notes on Deed for Land Sale and Will giving Land to Sarah Robinson, [Undated].** 3 frames.
- 0284 **Robinson Family History—[Gathered ca. 1870], pages 1–100.** 123 frames.
Major Topics: Newport, Rhode Island; shipbuilding and repair; government officials; British forces in Rhode Island during Revolutionary War; Louis Marie Noailles.
- 0407 **Robinson Family History—[Gathered ca. 1870], pages 101–200.** 96 frames.
Major Topics: American Revolution; General Cornwallis; Sevres china; Louis Marie Noailles; Philadelphia, Pennsylvania, social life; lawyers and legal services; Norwegian funeral.
- 0503 **Robinson Family History—[Gathered ca. 1870], pages 201–300.** 95 frames.
- 0598 **Robinson Family History—[Gathered ca. 1870], pages 301–400.** 103 frames.
Major Topic: Yellow fever in Philadelphia, Pennsylvania.
- 0701 **Robinson Family History—[Gathered ca. 1870], pages 401–474.** 74 frames.
Major Topics: Louis Marie Noailles; Philadelphia, Pennsylvania; diseases and disorders.
- 0775 **Robinson Family Inventories, [Undated].** 12 frames.
- 0787 **Smith, Annie Wharton, [1864 and 1874].** 3 frames.
Major Topics: Births; school record.
- 0790 **Smith, Benjamin Raper, [1888].** 3 frames.
Principal Correspondent: Benjamin Raper Smith.
- 0793 **Smith, Benjamin Raper and Esther Fisher Wharton, [Letters to the Children from Africa, 1925].** 153 frames.
Major Topics: Travel by ship; Italy; Africa; Germany; France.
Principal Correspondents: Benjamin Raper Smith; Esther Fisher Wharton.
- 0946 **Smith, Daniel B., [1844].** 2 frames.
- 0948 **Smith, Daniel B., [1829].** 5 frames.
Principal Correspondent: Daniel B. Smith.

Frame No.

- 0953 **Smith, Edward Wanton, 18 January 1875–27 August 1940.** 20 frames.
Major Topics: Obituaries; electric vehicle batteries.
- 0973 **Smith, Esther Fisher Wharton, [1862–1866].** 7 frames.
Principal Correspondent: Esther Fisher Wharton Smith.
- 0980 **Smith, Esther Morton, [1935 and Undated].** 8 frames.
Major Topic: Poetry.
- 0988 **Smith, Esther Morton, [1824–1829].** 15 frames.
Principal Correspondent: Esther Morton Smith.

Reel 14

Robinson Papers cont.

- 0001 **Welsh, Herbert—Early Moravian Indian Work, 1897.** 9 frames.
Major Topic: Native Americans.
- 0010 **Wharton, Esther Fisher—Letters on Engagement, 1858.** 30 frames.
Principal Correspondent: Esther Fisher Wharton.
- 0040 **Wharton, William—Daybook, [Undated].** 16 frames.
- 0056 **Wood, Anna Wharton, [1905].** 22 frames.
Major Topic: Amputation of child's foot.
Principal Correspondent: Anna Wharton Wood.
- 0078 **Wood, Anna Wharton—Birthday Greetings, 1914 and 1944.** 65 frames.
Principal Correspondent: Anna Wharton Wood.
- 0143 **Wood, Anna Wharton—Certified Copy of Death, [1945].** 2 frames.
- 0145 **Wood, Anna Wharton—Copy of Will, [1945].** 7 frames.
- 0152 **Wood, Anna Wharton—Appraisal for Estate Tax, 29 June 1945.** 8 frames.
- 0160 **Wood, Anna Wharton—Estate, Trustees' Accounting, 31 December 1975.** 16 frames.
- 0176 **Wood, Anna Wharton—"The Robinson Family and their Correspondence with the Vicomte and Vicomtesse de Noailles," 21 August 1922.** 21 frames.
- 0197 **Worcester, Alfred, [1938–1944].** 8 frames.
Major Topic: Poetry.
- 0205 **Wood, Henry Austin, 9 October 1855—February 1942.** 16 frames.
- 0221 **Morton, John—Letters to Mary Robinson Morton (wife) (typescripts), [1793–1817].** 46 frames.
Major Topics: Indian treaty; ships and shipping; dysentery; remedies; yellow fever; deaths.
Principal Correspondents: John Morton; Mary Robinson Morton.
- 0267 **Bolton, Aquila M.—Letters to MRM [Mary Robinson Morton], [1806].** 5 frames.
Principal Correspondents: Aquila M. Bolton; Mary Robinson Morton.
- 0272 **Bowne, R., [1818].** 2 frames.
- 0274 **Bringinghurst, James, [1804].** 3 frames.
Principal Correspondent: James Bringinghurst.
- 0277 **Clarke, Lewis L., [1809].** 10 frames.
Major Topic: Quaker meetings.
Principal Correspondents: Lewis L. Clarke; Mary Robinson Morton.
- 0287 **Coggeshall, E., [1806 and 1818].** 7 frames.
Principal Correspondent: Elizabeth Coggeshall.
- 0294 **Emlen, Samuel, Jr., [1796].** 3 frames.
Major Topic: Remarks on essay on the human species.
Principal Correspondent: Samuel Emlen Jr.
- 0297 **Fisher, Samuel Rowland—Shipping Permits and Land Deeds, [1767–1830].** 89 frames.
Major Topics: Property; debt; ships and shipping.
Principal Correspondents: Samuel R. Fisher; Peter Robinson; Joseph Pentecost.

Frame No.

- 0386 **Foulke, E., [1789–1806].** 10 frames.
Major Topics: Diseases and disorders; apprenticeship.
Principal Correspondent: Elizabeth Foulke.
- 0396 **Grattan, Lucia Cary, [1801–1807 and Undated].** 20 frames.
Major Topic: Travel by ship.
Principal Correspondent: Lucia Cary Grattan.
- 0416 **Jenkins, Anna A., [1824–1826].** 5 frames.
Major Topic: Medical lecture.
Principal Correspondents: Anna A. Jenkins; Mary Robinson Morton.
- 0421 **Jones, R., [Undated].** 2 frames.
Major Topic: Clothing.
Principal Correspondent: Rebecca Jones.
- 0423 **[Letter from New York], [1818].** 3 frames.
- 0426 **Morton, John—Letters to Mary Robinson Morton (wife) (typescripts), [1819].** 44 frames.
Major Topics: Disease in Newport, Rhode Island; balloon ascension; yellow fever in Philadelphia, Pennsylvania.
Principal Correspondents: John Morton; Mary Robinson Morton.
- 0470 **Morton, John, Junior, [1806–1808].** 10 frames.
Principal Correspondent: John Morton Jr.
- 0480 **Morton, Margaret, [1809–1823].** 11 frames.
Principal Correspondent: Margaret Morton.
- 0491 **Morton, Mary Robinson, [1827].** 3 frames.
Principal Correspondent: Mary Robinson Morton.
- 0494 **Morton, Mary Robinson (Molly)—Letters to Abigail, [1807–1829].** 338 frames.
Major Topics: Social and family life; application for cashiership; health conditions.
Principal Correspondents: Mary Robinson Morton; Abigail Robinson.
- 0832 **Morton, Mary Robinson—Letters to Sarah Robinson, [1794–1811].** 92 frames.
Principal Correspondents: Mary Robinson Morton; Sarah Robinson.

Reel 15

Robinson Papers cont.

- 0001 **Morton, Mary Robinson—Letters to Thomas Robinson, [1804–1815].** 38 frames.
Principal Correspondents: Mary Robinson Morton; Thomas Robinson.
- 0039 **Perry, Sarah, [1815].** 2 frames.
Principal Correspondent: Sarah Perry.
- 0041 **Robinson, Abigail—Letters to Mary Robinson Morton, 1792–1812.** 135 frames.
Major Topics: Diseases and disorders; jail-bond.
Principal Correspondents: Abigail Robinson; Mary Robinson Morton.
- 0176 **Robinson, Abigail—Letters to Mary Robinson Morton, [1811–1817].** 159 frames.
Major Topic: Diseases and disorders.
Principal Correspondents: Abigail Robinson; Mary Robinson Morton.
- 0335 **Robinson, Ann, [1815 and Undated].** 7 frames.
Major Topic: Diseases and disorders.
Principal Correspondent: Ann Robinson.
- 0342 **Robinson, Emma, [1822].** 8 frames.
Major Topic: Clothing.
Principal Correspondent: Emma Robinson.
- 0350 **Robinson, Franklin, [1817].** 2 frames.
Principal Correspondent: Franklin Robinson.

Frame No.

- 0352 **Robinson, Mary, [1800].** 3 frames.
Principal Correspondent: Mary Robinson.
- 0355 **Robinson, Rowland, [1817].** 3 frames.
Principal Correspondent: Rowland Robinson.
- 0358 **Robinson, Samuel F., [1817].** 4 frames.
Principal Correspondent: Samuel F. Robinson.
- 0362 **Robinson, Sarah, [1808].** 4 frames.
Principal Correspondent: Sarah Robinson.
- 0366 **Robinson, Thomas R., [1803].** 3 frames.
Principal Correspondent: Thomas R. Robinson.
- 0369 **Robinson, William R., [1820–1826].** 7 frames.
Principal Correspondent: William R. Robinson.
- 0376 **Shiple, Ann, [1823].** 3 frames.
Principal Correspondent: Ann Shipley.
- 0379 **Thurston, Amy, [1789].** 2 frames.
Principal Correspondent: Amy Thurston.
- 0381 **Whitall, H., [1812].** 3 frames.
Major Topic: Scholar.
Principal Correspondent: H. Whitall.
- 0384 **Williams, Mary, [1812].** 9 frames.
Principal Correspondents: Mary Williams; Mary Robinson Morton.
- 0393 **Various Letters to Mary Robinson Morton, 1800–1813.** 24 frames.
Major Topics: Institutional regulations regarding women's clothing and infectious diseases; estate of Thomas Richardson.
Principal Correspondent: Mary Robinson Morton.
- 0417 **Robinson Family Receipts, [1759 and 1822].** 4 frames.
- 0421 **Instructions, 1791.** 7 frames.
Major Topic: Refining of spermaceti.
- 0428 **Abigail Robinson Inventory, [1835].** 8 frames.
Major Topics: Abigail Robinson; household furnishings.
- 0436 **Miscellaneous Documents, [1792–1840].** 14 frames.
Major Topics: Youth; education among Quakers in America; silk trade.
Principal Correspondent: Daniel B. Smith.
- 0450 **Letters—Rowland Robinson, Abigail Robinson, and Molly Robinson (including typescripts), [1783–1850 and Undated].** 67 frames.
Major Topics: Social life; Haverford School Association; marriage; youth; description of funeral; ships and shipping.
Principal Correspondents: Rowland Robinson; Abigail Robinson; Mary Robinson Morton.
- 0517 **[Account Book, 1813–1833].** 45 frames.
- 0562 **[Treatise on Private Corporations, 1889].** 32 frames.
Principal Correspondent: William Wharton Smith.
- 0594 **[Account Book, 1794–1805].** 21 frames.
- 0516 **Wood, Anna Wharton—Haverford College, 1944.** 23 frames. [Note: Reel and Frame Nos. are identified correctly. Frame counter malfunctioned during microfilming process.]
Principal Correspondent: Anna Wharton Wood.
- 0539 **[Recipes, Undated].** 30 frames.
Major Topic: Food and food industry.
- 0569 **[Genealogical Notes, 1902 and Undated].** 17 frames.
- 0586 **Miscellaneous Documents, [Anna Wharton Wood, 1902–1926 and Undated].** 26 frames.
Major Topics: Louis Marie Noailles and Countess Noailles; genealogical notes.

Frame No.

- 0612 **Wood, Anna Wharton—Regarding Article on French in Newport, [1931–1935].** 12 frames.
Major Topic: Louis Marie Noailles.
Principal Correspondent: Anna Wharton Wood.
- 0624 **[Esther Morton Smith]—[Poetry], 1915.** 124 frames.
Major Topic: Poetry.
- 0748 **Morris, Richard, 1790.** 2 frames.
Principal Correspondent: Richard Morris.
- 0750 **Smith, Mary Morton, [1848].** 3 frames.
Major Topic: Description of stove.
Principal Correspondent: Mary Morton Smith.
- 0753 **Smith, William—[Letters from Esther F. W. Smith (mother), 1881–1883].** 29 frames.
Principal Correspondents: William Smith; Esther F. W. Smith.
- 0782 **Wanton Genealogy, [1939].** 20 frames.
Major Topic: Shipbuilding and repair.
Principal Correspondent: Anna Wharton Wood.
- 0802 **Wood Family Newspaper Clippings, [1939 and Undated].** 3 frames.

Reel 16

Robinson Papers cont.

- 0001 **[National Political Peace Campaign, 1925–1937].** 79 frames.
Major Topics: Arms control and disarmament; Quaker religion; militarism and military training; Reserve Officers' Training Corps.
Principal Correspondents: John Haynes Holmes; Roswell P. Barnes.
- 0080 **Wood, Henry A., [Undated].** 28 frames.
Major Topic: Antiseptic treatment and surgery.
- 0108 **Wood, Henry A.—Haverford College, 1969–1970.** 5 frames.
Principal Correspondent: Henry A. Wood.
- 0113 **[Miscellaneous Letters, 1899–1909, 1975–1976, and Undated].** 171 frames.
Major Topics: Boston, Massachusetts, social register (1976); Waltham, Massachusetts, social and family life.
Principal Correspondents: Esther Morton Smith; Anna Wharton Wood.
- 0284 **Miscellaneous Documents, [1932–1933 and Undated].** 5 frames.
Major Topics: Admiral Hugh Rodman; Herbert Hoover autographed portrait.
- 0289 **Expenses for Maintenance of Robinson House, [1938–1941].** 5 frames.
Principal Correspondent: Esther Morton Smith.
- 0294 **Smith, Esther Morton, [1911–1941].** 38 frames.
Principal Correspondent: Esther Morton Smith.
- 0332 **Smith, Esther Morton—Letters, [1901–1920 and Undated].** 176 frames.
Major Topic: Poetry book.
Principal Correspondent: Esther Morton Smith.
- 0508 **Smith, Esther Morton—Permission to Visit Rose Island, [1904–1927].** 13 frames.
- 0521 **Wood—Cambridge Trust Company, [1929–1951 and Undated].** 70 frames.
- 0591 **Wood, Henry A., Jr., [1948–1975].** 3 frames.
Major Topics: Belmont Hill School; Preservation Society of Newport County.
Principal Correspondent: Henry A. Wood Jr.
- 0594 **Almy, William, [1815].** 2 frames.
Principal Correspondent: William Almy.
- 0596 **Letter to William Almy, [Undated].** 3 frames.
Principal Correspondent: William Almy.

- 0599 **Barker, Mary, [1810].** 3 frames.
Principal Correspondent: Mary Barker.
- 0602 **Borden Mortgage, 24 November 1768.** 4 frames.
- 0606 **Bowne, Amy Robinson—Letters to Mary Robinson Morton, [1794–1800].** 30 frames.
Major Topics: Smallpox; Louis Marie Noailles.
Principal Correspondents: Amy Robinson Bowne; Mary Robinson Morton.
- 0636 **Bowne, R. L.—Letters, 1802.** 10 frames.
Principal Correspondent: R. L. Bowne.
- 0646 **Bowne, R. R., [1818].** 3 frames.
Principal Correspondent: R. R. Bowne.
- 0649 **Canby, James, [1813].** 3 frames.
Major Topic: Appeal to Orphans' Court.
Principal Correspondent: James Canby.
- 0652 **Churchman, George—Letter to Abigail Robinson, 1805.** 4 frames.
Principal Correspondents: George Churchman; Abigail Robinson.
- 0656 **Clarke, Lewis L., [1809].** 2 frames.
Major Topic: Free blacks.
Principal Correspondent: Lewis L. Clarke.
- 0658 **Crotch, William—Letter to Thomas Robinson, 1805.** 3 frames.
Principal Correspondents: William Crotch; Thomas Robinson.
- 0661 **Eddy, H., [1827].** 5 frames.
Principal Correspondent: H. Eddy.
- 0666 **Fisher Family, [Undated].** 14 frames.
Major Topics: Clothing; cholera epidemic in Philadelphia; Philadelphia, Pennsylvania.
- 0680 **Foulke, Elizabeth—Letters, 1785, 1800–1802, and 1816–1820.** 56 frames.
Major Topics: Mercury as tumor remedy; king of England; Quaker meetings.
Principal Correspondent: Elizabeth Foulke.
- 0736 **Gardiner, Catharine—Letters to Elizabeth Foulke, 1786–1787.** 13 frames.
Major Topic: Magnets and navigation.
Principal Correspondents: Catharine Gardiner; Elizabeth Foulke.
- 0749 **General Research by Benjamin R. Smith, 1888.** 49 frames.
Major Topics: Robinson family; Glassell family.
- 0798 **Miscellaneous Documents, [ca. 1860].** 121 frames.
Major Topics: Wharton family; Fisher family.

Reel 17

Robinson Papers cont.

- 0001 **Gorsuck, Rebecca, [1808].** 3 frames.
Principal Correspondent: Rebecca Gorsuck.
- 0004 **Grattan, Carolina Cary—Letters to Abigail Robinson, 1802–1803.** 11 frames.
Principal Correspondents: Carolina Cary Grattan; Abigail Robinson.
- 0015 **Grattan, Lucia Cary—Letters to Abigail Robinson, 1801–1804.** 18 frames.
Principal Correspondents: Lucia Cary Grattan; Abigail Robinson.
- 0033 **Hunter, William, 1815.** 3 frames.
Major Topic: Employment of William Robinson.
Principal Correspondent: William Hunter.
- 0036 **Jenkins, Anna [A.], [1827].** 5 frames.
Principal Correspondent: Anna [A.] Jenkins.
- 0041 **Mitchell, Mary, 1791.** 2 frames.
Principal Correspondent: Mary Mitchell.

- 0043 **Morton, Esther Robinson, [1813].** 7 frames.
Major Topic: Social life.
Principal Correspondent: Esther Robinson Morton.
- 0050 **Morton, John—Letters to Mary Robinson Morton (wife), 1793 and 1800–1821.** 111 frames.
Major Topics: Deaths; weather conditions; social life; children; health conditions; marriage; courtship.
Principal Correspondents: John Morton; Mary Robinson Morton.
- 0161 **Morton, John—Letters, [1806–1826].** 22 frames.
Major Topics: Deaths; health conditions; New Lights religious movement; grains and grain products.
Principal Correspondent: John Morton.
- 0183 **Morton, John, Jr.—Letters to Mary Robinson Morton (mother), 1802 and 1806.** 10 frames.
Major Topics: Health conditions; children.
Principal Correspondents: John Morton Jr.; Mary Robinson Morton.
- 0193 **Morton, Mary Robinson, 1811.** 3 frames.
Major Topics: Weather conditions; travel.
Principal Correspondent: Mary Robinson Morton.
- 0196 **Morton, Mary Robinson—Letters to John Morton, 1780, 1806–1821, and 1827.** 100 frames.
Major Topics: Children; social life; travels of Mary Morton Robinson; travel by ship.
Principal Correspondents: Mary Robinson Morton; John Morton.
- 0296 **Morton, Mary Robinson—Letters, 1808 and 1817–1820.** 17 frames.
Principal Correspondent: Mary Robinson Morton.
- 0313 **Morton, Mary Robinson—Letters, [1807–1824].** 21 frames.
Major Topic: Social life.
Principal Correspondent: Mary Robinson Morton.
- 0334 **Morton, Robert—Letters to Esther Morton, 1818–1824.** 70 frames.
Major Topics: Travels of Robert Morton; social life; boarding houses; military school.
Principal Correspondents: Robert Morton; Esther Morton.
- 0404 **Morton, Robert—Letters to His Father, 1811–1815.** 8 frames.
Major Topic: Education.
Principal Correspondent: Robert Morton.
- 0412 **Mott, Eliza, [1791].** 2 frames.
Major Topic: Death.
Principal Correspondent: Eliza Mott.
- 0414 **Pearsall, F., [1815].** 3 frames.
- 0417 **[Pollock], R.—Letter to Abigail Robinson, 1806.** 3 frames.
Principal Correspondents: R. Pollock; Abigail Robinson.
- 0420 **Powell, Catharine—Letters to Mary Robinson Morton, 1792–1802.** 37 frames.
Major Topics: Social life; health conditions.
Principal Correspondents: Catharine Powell; Mary Robinson Morton.
- 0457 **Robinson, Abigail—Letter to Elizabeth Foulke, 1785.** 3 frames.
Major Topic: Social life.
Principal Correspondents: Abigail Robinson; Elizabeth Foulke.
- 0460 **Robinson, Abigail—Letters to John Morton, 1794–1826.** 66 frames.
Major Topic: Health conditions.
Principal Correspondents: Abigail Robinson; John Morton.
- 0526 **Robinson, Amy—Letters to Abigail Robinson, 1789–1792.** 35 frames.
Major Topic: Social life.
Principal Correspondents: Amy Robinson; Abigail Robinson.
- 0561 **Robinson, Abigail—Letters to Mary Robinson Morton (sister), 1801 and 1818–1829.** 175 frames.
Major Topics: Social life; health conditions.

- Principal Correspondents:* Abigail Robinson; Mary Robinson Morton.
- 0736 **Robinson, Amy—Letters to Sarah Robinson (mother), 1802 and 1831.** 7 frames.
Principal Correspondents: Amy Robinson; Sarah Robinson.
- 0743 **Robinson, Amy, [1791–1818].** 15 frames.
Major Topics: Social life; family property.
Principal Correspondent: Amy Robinson.
- 0758 **Robinson, Ann—Letter to Mary Robinson Morton, [Undated].** 3 frames.
Major Topic: Tabbinet fabric.
Principal Correspondents: Ann Robinson; Mary Robinson Morton.
- 0761 **Robinson, Anne A.—Letters to Esther Morton Smith (Hetty), 1823–1828.** 37 frames.
Major Topic: Social life.
Principal Correspondents: Anne A. Robinson; Esther Morton Smith.
- 0798 **Robinson, Mary—Letters to Elizabeth Foulke, 1783–1789.** 79 frames.
Major Topics: Social life; marriage.
Principal Correspondents: Mary Robinson; Elizabeth Foulke.
- 0877 **Robinson, Rowland, [1784].** 3 frames.
Major Topic: Travels of Rowland Robinson.
Principal Correspondent: Rowland Robinson.
- 0880 **Robinson, Sarah—Letters to John Morton, 1795–1811.** 14 frames.
Major Topics: Health conditions; coal in Newport, Rhode Island; travel by ship; Abigail Robinson.
Principal Correspondents: Sarah Robinson; John Morton.
- 0894 **Robinson, Sarah, [1810].** 2 frames.
Principal Correspondent: Sarah Robinson.
- 0896 **Robinson, Sarah—Letters to Mary Robinson Morton (Molly), 1801–1812.** 41 frames.
Major Topics: Health conditions; wills and estates; courtship and engagement; children.
Principal Correspondents: Sarah Robinson; Mary Robinson Morton.
- 0937 **Robinson, Thomas—Letter to Mary Robinson Morton, 1811.** 3 frames.
Major Topic: Health conditions.
Principal Correspondents: Thomas Robinson; Mary Robinson Morton.
- 0940 **Robinson, Thomas, [1756–1759].** 9 frames.
Major Topics: Contracts; ships and shipping.
- 0949 **Robinson, William T.—Letter to William R. Robinson (son), 1828.** 3 frames.
Major Topics: Alabama; parental advice.
Principal Correspondents: William T. Robinson; William R. Robinson.
- 0952 **Rotch, M.—Letter, 1813.** 3 frames.
Major Topic: Death of Eliza Mott.
Principal Correspondent: M. Rotch.

Reel 18

Robinson Papers cont.

- 0001 **Smith, Benjamin R.—Daybook, 1875–1881.** 80 frames.
Major Topic: Financial records.
- 0081 **Smith, D. B., [1824].** 3 frames.
Major Topic: Travel by ship.
Principal Correspondent: D. B. Smith.
- 0084 **Smith, Esther Morton—Letter to John Morton (father), 1826.** 3 frames.
Major Topic: Visit to Newport, Rhode Island.
Principal Correspondents: Esther Morton Smith; John Morton.

- 0087 **Smith, Esther Morton—Letters to Abigail Robinson (aunt), 1824 and 1826.** 11 frames.
Major Topics: Health condition of Mary Robinson Morton; New Lights religious movement.
Principal Correspondents: Esther Morton Smith; Abigail Robinson.
- 0098 **Thurston, Amy—Letters, 1789.** 9 frames.
Major Topic: Social life.
Principal Correspondent: Amy Thurston.
- 0107 **Thurston, William R, [1820–1826].** 5 frames.
Principal Correspondent: William R. Thurston.
- 0112 **Unidentified Letters, [1790–1824].** 40 frames.
Major Topic: Social life.
- 0152 **Wharton, Deborah Fisher—Receipt Book, [1864].** 5 frames.
Major Topics: Estate of Anna Wharton; furniture and household items.
- 0157 **Wickham, S. (cousin Suhey), [Undated].** 3 frames.
Principal Correspondents: S. Wickham; Abigail Robinson.
- 0160 **Williams, Mary—Letter to Mary Robinson Morton, 1820.** 7 frames.
Major Topic: Health condition of Mary Williams' mother.
Principal Correspondents: Mary Williams; Mary Robinson Morton.
- 0167 **Williams, Mary—Letters to Abigail Robinson, 1803–1804.** 8 frames.
Principal Correspondents: Mary Williams; Abigail Robinson.
- 0175 **Miscellaneous Materials and Receipts, [1755–1784 and Undated].** 256 frames.
Major Topics: James Thomson; poetry; collection of signatures; receipts and invoices of Joshua Fisher & Sons; ships and shipping; receipts and invoices of Thomas Robinson.
- 0431 **Esther Morton—Letters to Her Mother, [1800–1859 and Undated].** 86 frames.
Major Topics: Travels of Esther Morton; social life.
Principal Correspondents: Esther Morton; Mary Robinson Morton.
- 0517 **[Miscellaneous Materials], [1753–1852, 1885–1904, and Undated].** 448 frames.
Major Topics: Joshua Fisher; manumission of slaves; receipts and invoices of Thomas Robinson; slave trade; will of Thomas Hazard; Deborah Fisher; poetry; will of Charity Rotch; ships and shipping; receipts of William Redwood; Congress; lawyers and legal services; diary of Anna Wharton Smith; social life; receipts of Abigail Robinson; leather industry and products; record of family births and deaths; religious books.
Principal Correspondents: Charles Francis Adams; H. O. Hildreth; Esther Morton; William Jackson; Joshua Fisher; Amy Fisher.

Reel 19

Robinson Papers cont.

- 0001 **Letterbook, 1753–1771.** 263 frames.
Major Topics: Ships and shipping; debts; insurance and insurance industry.
Principal Correspondents: Thomas Robinson; Benjamin Tilley; Josiah Boydell; William Stead; Thomas Lightfoot; William Lightfoot; Walter Franklin; Samuel Franklin; Joseph Sherwood; Caleb Carpenter.

Williams Collection

- 0264 **Williams Collection—Introduction and Index.** 93 frames.
- 0357 **[1743–1799].** 30 frames.
Major Topics: Death of Catharine Jackson; land ownership; agricultural operations; Quakers; contracts; ships and shipping; smallpox inoculation; social life.
Principal Correspondents: John Williams; Mary Cocklain; Eleanor King.
- 0387 **1801–1802.** 11 frames.
Major Topics: Diseases and disorders; land ownership; Ohio; Thomas Rotch.

Frame No.

- 0398 *Principal Correspondent:* John Williams.
1800. 14 frames.
Major Topic: Social life.
Principal Correspondents: Mary Rotch; Ruth Hadwin.
- 0412 **1803.** 24 frames.
Major Topics: Religion; Nine Partners, New York.
Principal Correspondents: Mary Rotch; Ruth Hadwin.
- 0436 **1804.** 14 frames.
Major Topic: Land ownership.
Principal Correspondents: John Williams; William Burling.
- 0450 **1805.** 19 frames.
Major Topics: Poetry; death of Dorcas Williams; courtship.
Principal Correspondent: William Almy.
- 0469 **[January–March] 1806.** 13 frames.
Major Topic: Debts of Nicholas Williams.
Principal Correspondents: Nicholas Williams; Mary Rotch; Ruth Hadwin.
- 0482 **[April–June] 1806.** 16 frames.
Major Topics: Impressment of Nicholas Williams by British Royal Navy; social life.
Principal Correspondent: Ruth Hadwin.
- 0498 **[July–December] 1806.** 8 frames.
Major Topics: Debts of Nicholas Williams; courtship and engagement.
Principal Correspondents: Ruth Hadwin; Obadiah Williams.
- 0506 **[Undated Letters from Earlier than 1807].** 34 frames.
Major Topic: Social life.
Principal Correspondents: Ruth Hadwin; Mary Rotch.
- 0540 **1807.** 10 frames.
Major Topics: Engagement; impressment of American sailors by British Royal Navy.
Principal Correspondents: Ruth Hadwin; Mary Rotch; Nicholas Williams.
- 0550 **1808.** 22 frames.
Major Topics: Religious beliefs; social life; health conditions.
Principal Correspondents: Ruth Hadwin Williams; Mary Rotch; John Williams Jr.
- 0572 **1809.** 13 frames.
Major Topics: Health conditions; travels of Obadiah Williams.
Principal Correspondents: Ruth Hadwin Williams; Obadiah Williams.
- 0585 **1810.** 18 frames.
Major Topics: Farms and farmland; social life; deaths; health conditions.
Principal Correspondents: William Burling; Obadiah Williams; John Williams Jr.; Nicholas Williams.
- 0603 **1811.** 9 frames.
Major Topic: Financial situation of Nicholas Williams.
Principal Correspondents: Joseph Bragg; Obadiah Williams; Nicholas Williams; William Williams.
- 0612 **[January–June] 1812.** 13 frames.
Major Topics: Farms and farmland; Ohio; travels of Ruth Hadwin Williams.
Principal Correspondents: Ruth Hadwin Williams; Obadiah Williams.
- 0625 **[July–December] 1812.** 26 frames.
Major Topics: Ohio; farms and farmland; New York; travels of A. Purinton; settlement of accounts; War of 1812; social life.
Principal Correspondents: John Williams; Peleg Weeden; Obadiah Williams; A. Purinton; John E. Williams; Ruth Hadwin Williams.
- 0651 **[January] 1813.** 29 frames.

Frame No.

- Major Topics:* Religious beliefs; settlement of accounts; War of 1812.
Principal Correspondent: Obadiah Williams.
- 0680 **[February] 1813.** 14 frames.
Major Topic: Financial records.
Principal Correspondent: John E. Williams.
- 0694 **[March] 1813.** 14 frames.
Major Topics: Leather industry and products; financial records.
Principal Correspondents: John E. Williams; Obadiah Williams; Ruth Hadwin Williams; E. Earl; Ruth Rodman.
- 0708 **[April–June] 1813.** 14 frames.
Major Topic: Capture of Samuel Williams by British privateer.
Principal Correspondents: David Williams; Ruth Hadwin Williams; Mary Williams; Obadiah Williams.
- 0722 **[July–December] 1813.** 36 frames.
Major Topics: Debts; deaths.
Principal Correspondents: E. Earl; John Williams Jr.; James Williams; L. Earl; Ruth Hadwin Williams; R. Rodman; David Williams; Obadiah Williams.
- 0758 **[January–June] 1814.** 25 frames.
Major Topics: Quaker meetings; financial records; settlement of accounts.
Principal Correspondents: Ruth Hadwin Williams; E. Earl; Benjamin Hadwin.
- 0783 **[July–December] 1814.** 17 frames.
Major Topics: Death of John M. Mansfield; financial records; War of 1812; currency.
Principal Correspondents: David Rodman; John E. Williams; Obadiah Williams; Ruth Hadwin Williams.
- 0800 **1815–1817.** 19 frames.
Major Topics: Religious beliefs; financial records.
Principal Correspondents: David Rodman; Obadiah Williams; Ruth Hadwin Williams; Sarah Earl; E. Killey.
- 0819 **[January–June] 1818.** 23 frames.
Major Topics: Grain storage and facilities; family business; sale of Obadiah Williams' house; deaths; Quaker meetings.
Principal Correspondents: Obadiah Williams; David Rodman; Ruth Hadwin Williams.
- 0842 **[July–December] 1818.** 21 frames.
Major Topics: Health conditions; deaths; agriculture; Pennsylvania; wills and estates.
Principal Correspondent: Ruth Hadwin Williams.
- 0863 **1819.** 13 frames.
Major Topic: Joseph Barker Jr.
Principal Correspondents: Obadiah Williams; David Rodman; Ruth Hadwin Williams; Mary Williams.

Reel 20

Williams Collection cont.

- 0001 **1820–1823.** 28 frames.
Major Topics: Deaths; health conditions; tribute to Mary Hanbury.
Principal Correspondents: Dorcas Brown; Rachel Priestman; O. M. Brown; Ruth Hadwin Williams; Abigail Greene.
- 0029 **1824–1825.** 26 frames.
Major Topics: Poetry; tribute to Obadiah Brown; death of Obadiah Brown; boarding school; Catharine Williams; typhus fever; social life.
Principal Correspondents: Dorcas Brown; John Bragg; Ruth Hadwin Williams.

- 0055 **1826**. 11 frames.
Major Topics: Death of Dorcas Brown; Catharine Williams; Frederick Williams; prisons and prisoners.
Principal Correspondents: E. Killey; Obadiah Williams; Ruth Hadwin Williams.
- 0066 **1827–1828**. 10 frames.
Major Topics: Deaths; Quaker religion; Hicksite Quakers; Quaker meetings.
Principal Correspondents: Lydia Breed; Obadiah Williams; John Browne; Catharine Williams.
- 0076 **1829**. 10 frames.
Major Topics: Banks and banking; Freemasonry; travel; divisions in the Quaker church; death of Amy Hadwin.
Principal Correspondents: James Williams; Obadiah Williams; Ruth Hadwin Williams; Charles Hadwin.
- 0086 **1830**. 14 frames.
Major Topics: Schoolteachers; Phebe Burges; Hicksite Quakers.
Principal Correspondents: Catharine Williams; Samuel Williams; Obadiah Williams; Ruth Hadwin Williams; Frederic Williams.
- 0100 **1831–1836**. 16 frames.
Major Topics: Farms and farmland; boarding school; Ohio; travel by ship.
Principal Correspondents: Catharine Williams; Dorcas Fry; Obadiah Williams.
- 0116 **1837–1847**. 21 frames.
Major Topics: Deaths; political parties; abolition; temperance movement; social life; business and industry.
Principal Correspondents: Rebecca Cornell; Samuel Williams; Elizabeth Williams; Ruth Hadwin Williams; Dorcas B. Purdie.
- 0137 **1848–1859**. 46 frames.
Major Topics: Health conditions; Quaker religion; divisions in the Quaker church; wills and estates; farms and farmland; schools; Quaker meetings.
Principal Correspondents: Catharine Williams; Eliza Mott; Dorcas B. Purdie; John E. Williams; Samuel Williams.
- 0183 **Henry Williams, [c. 1850]**. 65 frames.
Major Topics: Social life; slavery; children; Quaker religion; visit to Newport, Rhode Island; Providence School students; courtship and engagement; missionary work in Bombay, India; recipes.
Principal Correspondents: Henry Williams; Catharine Williams.
- 0248 **Legal Documents (Uncatalogued), [1791–1859 and Undated]**. 21 frames.
Major Topics: John Earl Jr.; Obadiah Williams; wills and estate; Jonathan Williams; Jacob Barney; David Williams; family history; deeds and conveyances.
- 0269 **Undated**. 7 frames.
Major Topics: Deaths; poetry; literary interests.
- 0276 **Funeral Letters, Ship Papers, and School Reports (Uncatalogued), [1792–1826 and Undated]**. 53 frames.
Major Topics: Ships and shipping; Catharine Williams' school papers; deaths; poetry; estate of Jonathan Williams.
- 0329 **Bibles (Uncatalogued), [1818–1829, 1864–1873, and Undated]**. 91 frames.
Major Topics: Births; deaths; marriages; poetry; Ezra Sampson; Harriet Ludley; Joseph Hoag; Mary Watkins; Samuel Williams; Matthew Franklin; Obadiah Williams; recipes; medical treatments; Iowa.
- 0420 **Williams Collection, Part 2, June 1800–1819**. 28 frames.
Major Topics: Wilbur schism in the Quaker church; Quaker meetings; farms and farmland; New York; deeds and conveyances.

- Principal Correspondents:* L. Earl; E. Burling; Ruth Hadwin Williams; Samuel Williams; Obadiah Williams; Dorcas Brown; William Burling; John Williams.
- 0448 **Williams Collection, Part 2, May 1822–December 1825.** 27 frames.
Major Topics: Boarding school; Quaker religion; farms and farming; deaths; religion.
Principal Correspondents: Sarah Williams; D. Williams; Dorcas Brown; Obadiah Williams; Samuel Williams; James Williams; Ruth Hadwin Williams; Henry Williams.
- 0475 **Williams Collection, Part 2, May 1826–July 1829.** 16 frames.
Major Topics: Hicksite Quakers; Quaker religion; religion.
Principal Correspondents: Henry Williams; Obadiah Williams; Dorcas Brown.
- 0491 **Williams Collection, Part 2, July 1830–September 1835.** 32 frames.
Major Topics: Debts; farms and farming; political views; illness of Samuel Williams.
Principal Correspondents: John Williams; Thomas Leggett; James Williams; Obadiah Williams; Samuel Williams; Henry Williams; Eliza Mott.
- 0523 **Williams Collection, Part 2, February 1836–October 1839.** 50 frames.
Major Topics: Farms and farming; visit of Joseph John Gurney; religion; financial records; social life.
Principal Correspondents: Obadiah Williams; Samuel Williams; Elizabeth Knight; Catharine Williams; M. Williams; Eliza Mott.
- 0573 **Williams Collection, Part 2, April 1840–March 1845.** 38 frames.
Major Topics: Children; religion; health conditions; abolition; deaths; poetry; financial records of Obadiah Williams.
Principal Correspondents: Catharine Williams; Dorcas B. Purdie; Elizabeth Knight; Obadiah Williams.
- 0611 **Williams Collection, Part 2, February 1846–December 1849.** 64 frames.
Major Topics: Financial records; suicide; health conditions; death of Obadiah Williams; death of Ruth Hadwin Williams.
Principal Correspondents: Eliza Purdie; Ruth Hadwin Williams; Catharine Williams; Eliza Mott; Elizabeth Knight; Henry Williams; Dorcas B. Purdie; Samuel Williams; Mary Williams.
- 0675 **Williams Collection, Part 2, January 1850–November 1853.** 45 frames.
Major Topics: Deaths; schools; financial records; missions and missionaries; marriage.
Principal Correspondents: Catharine Williams; Eliza Mott; Dorcas B. Purdie; Elizabeth Knight.
- 0720 **Williams Collection, Part 2, April 1854–December 1855.** 41 frames.
Major Topics: Medical treatments; deaths; children; health conditions.
Principal Correspondents: Dorcas B. Purdie; Catharine Williams; J. E. Williams; H. H. Williams.
- 0761 **Williams Collection, Part 2, February 1856–November 1857.** 65 frames.
Major Topics: Social life; schools; health conditions; religion; servants.
Principal Correspondents: E. Burling; Dorcas B. Purdie; Henry Williams; John Purdie; Eliza Mott; Catharine Williams.
- 0826 **Williams Collection, Part 2, January 1858–December 1859.** 68 frames.
Major Topics: Social life; literary interests; farms and farmland.
Principal Correspondents: Dorcas B. Purdie; Catharine Williams; H. H. Williams; Francis Williams; E. Burling; Eliza Mott.
- 0894 **Williams Collection, Part 2, 1849–1850.** 6 frames.
Principal Correspondents: John E. Williams; Eliza Purdie.
- 0900 **Williams Collection, Part 2, 1860.** 16 frames.
Major Topic: Health conditions.
Principal Correspondents: Eliza Purdie; John E. Williams.

Reel 21

Williams Collection cont.

- 0001 **Williams Collection, Part 2, 1861–1862.** 20 frames.
Major Topics: Civil War; farms and farming; weddings.
Principal Correspondents: E. Burling; Samuel Williams.
- 0021 **Williams Collection, Part 2, 1863–1864.** 65 frames.
Major Topics: Health conditions; Civil War; farms and farming; boarding school.
Principal Correspondents: Priscilla Purdie; Samuel Williams.
- 0086 **Williams Collection, Part 2, 1865–1866.** 52 frames.
Major Topics: Social life; investments; wills and estates; Catharine Williams; Reconstruction; boarding school.
Principal Correspondents: Eliza Mott; Henry Williams; Samuel Williams.
- 0138 **Williams Collection, Part 2, 1867.** 36 frames.
Major Topics: Health conditions; farms and farming.
Principal Correspondents: Thomas Carman; Samuel Williams; Sarah M. Williams.
- 0174 **Williams Collection, Part 2, 1868–1869.** 37 frames.
Principal Correspondents: Sarah M. Williams; Eliza Mott; Henry Williams; John Purdie.
- 0211 **Williams Collection, Part 2, 1870.** 52 frames.
Major Topics: Quaker religion; health conditions; social life.
- 0263 **Williams Collection, Part 2, 1871.** 36 frames.
Major Topics: Weather conditions; health conditions; fire; religion; coal; railroads.
Principal Correspondents: Catharine Williams; John E. Williams; Samuel Williams.
- 0299 **Williams Collection, Part 2, 1872–1873.** 38 frames.
Major Topics: Politics; weather conditions; boarding school.
Principal Correspondents: Samuel Williams; Catharine Williams.
- 0337 **Williams Collection, Part 2, 1874–1875.** 35 frames.
Major Topics: Social life; farms and farming; investments; deaths.
Principal Correspondent: Catharine Williams.
- 0372 **Williams Collection, Part 2, 1876–1877.** 13 frames.
Major Topic: Marriage.
Principal Correspondents: Dorcas B. Purdie; Catharine Williams; Helena Heaton.
- 0385 **Williams Collection, Part 2, 1878–1879.** 35 frames.
Major Topics: Religion; health conditions; deaths; child rearing; music.
Principal Correspondents: Helena Heaton; Eliza Mott; Ann Clark; Henry Williams.
- 0420 **Williams Collection, Part 2, 1880 and Undated.** 50 frames.
Major Topics: Health conditions; sermons; religion; education.
Principal Correspondents: Henry Williams; Eliza Mott; D. E. Collins; Dorcas B. Purdie.
- 0470 **Williams Collection, Part 2, 1881–1882.** 37 frames.
Major Topic: Schools.
- 0507 **Williams Collection, Part 2, 1883–1884.** 42 frames.
Major Topics: Health conditions; employment; deaths; missionary work with Indians.
Principal Correspondents: Eliza Mott; Hannah H. Leggett; Jeremiah Hubbard.
- 0549 **Williams Collection, Part 2, 1885–1886.** 20 frames.
- 0569 **Williams Collection, Part 2, 1887.** 29 frames.
Principal Correspondent: Eliza Mott.
- 0598 **Williams Collection, Part 2, 1888.** 33 frames.
Major Topics: Remedies; diseases and disorders.

- 0631 **Williams Collection, Part 2, 1889.** 42 frames.
Major Topics: Weather conditions; missions and missionaries; religion; schools; remedies; Indians.
Principal Correspondents: Catharine Carman; Mary G. Hubbard.
- 0673 **Williams Collection, Part 2, 1890–1891.** 32 frames.
Major Topics: Health conditions; schools.
Principal Correspondent: Catharine Carman.
- 0705 **Williams Collection, Part 2, 1892–1909.** 24 frames.
Major Topics: Health conditions; Indians; schools; missions and missionaries; deeds and conveyances.
Principal Correspondent: Thomas Carman.
- 0729 **Williams Collection, Part 2, Undated.** 37 frames.
Major Topics: Quaker meetings; New York City; children; settlement of accounts; health conditions.
Principal Correspondents: Henry Williams; Samuel Williams; C. Williams; Eliza Mott; Francis H. Williams.
- 0766 **Williams Collection, Part 2, January 1860–November 1862.** 39 frames.
Major Topics: Health conditions; farms and farming; slavery; Civil War; settlement of accounts.
Principal Correspondents: Helena Heaton; H. H. Williams; Samuel Williams; Catharine Williams; Francis H. Williams.
- 0805 **Williams Collection, Part 2, May 1863–December 1865.** 53 frames.
Major Topics: C. B. Metcalf Highland School; slavery; Civil War; farms and farming.
Principal Correspondents: Catharine Williams; Samuel Williams; Eliza Mott; Francis H. Williams.
- 0858 **Williams Collection, Part 2, April 1866–December 1867.** 34 frames.
Major Topics: Marriage; politics; education; social life; death of Ann Williams.
Principal Correspondents: Samuel Williams; Catharine Williams.
- 0892 **Williams Collection, Part 2, January 1868–December 1869.** 37 frames.
Major Topics: Social life; Quaker meetings.
Principal Correspondents: Thomas Carman; John E. Williams; Catharine Williams.
- 0929 **Williams Collection, Part 2, 1872–1878.** 15 frames.
Major Topics: Williams family; health conditions.
Principal Correspondents: Catharine Williams; Eliza Mott.

Reel 22

Williams Collection cont.

- 0001 **Williams Collection, Part 2, April 1890–December 1898.** 5 frames.
Major Topic: Death of William H. Peabody.
- 0006 **Williams Collection, Part 2, December 1881–1887.** 42 frames.
Major Topics: Will of Catharine Carman; personal property; estate of Charles T. Williams; mental illness; Quaker meetings; religious education.
- 0048 **Williams Collection, Part 2, Undated.** 75 frames.
Major Topics: Politics; literature; missions and missionaries; women; China; India; health conditions; boarding school.
Principal Correspondents: Catharine Williams; Samuel Williams; Eliza Mott.
- 0123 **Williams Collection, Part 2, Undated.** 49 frames.
Major Topics: Earthquakes; health conditions; schools; weather conditions; social life; religious beliefs.

- Principal Correspondents:* Dorcas B. Purdie; Eliza Mott; Catharine Williams; Samuel Williams.
- 0172 **Williams Collection, Part 2, Undated.** 62 frames.
Major Topics: Deaths; religion; Thomas Paine; Williams family; financial records; poetry.
Principal Correspondents: Catharine Williams; John E. Williams; Henry Williams; Samuel Williams; Lewis L. Clarke.
- 0234 **Williams Collection, Part 2, June 1800–1819.** 27 frames.
Major Topics: Quaker religion; contracts.
Principal Correspondents: Ruth Hadwin Williams; E. Burling; William Burling; Obadiah Williams.
- 0261 **Williams Collection, Part 2, May 1822–December 1825.** 27 frames.
Major Topics: Farms and farming; death of Ann Williams; religion.
Principal Correspondents: H. H. Williams; James Williams.
- 0288 **Williams Collection, Part 2, May 1826–July 1829.** 16 frames.
Major Topics: Quaker religion; Hicksite Quakers; family life.
Principal Correspondents: Henry Williams; Obadiah Williams.
- 0304 **Williams Collection, Part 2, July 1830–September 1835.** 32 frames.
Major Topics: Debts; farms and farming; religion.
Principal Correspondents: John Williams; Thomas Leggett; Obadiah Williams; James Williams; Samuel Williams; Henry Williams; Eliza Mott.
- 0336 **Williams Collection, Part 2, February 1836–October 1839.** 49 frames.
Major Topics: Farms and farming; religion; financial records; health conditions.
Principal Correspondents: Samuel Williams; Obadiah Williams; Catharine Williams; Elizabeth Knight.
- 0385 **Williams Collection, Part 2, April 1840–March 1845.** 35 frames.
Major Topics: Quaker meetings; children; health conditions; deaths; travel; financial records.
Principal Correspondents: Catharine Williams; Henry Williams; Dorcas B. Purdie; Elizabeth Knight.
- 0420 **Williams Collection, Part 2, February 1846–December 1849.** 67 frames.
Major Topics: Wills and estates; financial records; education; health conditions; family life; literary interests; social life.
Principal Correspondents: Catharine Williams; Dorcas B. Purdie; Eliza Mott; Elizabeth Knight; Henry Williams; Mary Williams; Samuel Williams.
- 0487 **Williams Collection, Part 2, January 1850–November 1853.** 44 frames.
Major Topics: Family life; health conditions; financial records; children.
Principal Correspondents: Dorcas B. Purdie; Eliza Mott; Elizabeth Knight; Francis H. Williams; Catharine Williams.
- 0531 **Williams Collection, Part 2, April 1854–December 1855.** 38 frames.
Major Topics: Household matters; health conditions; deaths; education.
Principal Correspondents: Dorcas B. Purdie; John E. Williams; Catharine Williams; Margaret Carman; H. H. Williams.
- 0569 **Williams Collection, Part 2, February 1856–November 1857.** 66 frames.
Major Topics: Health conditions; social life; religion; schools.
Principal Correspondents: Catharine Williams; E. Burling; Dorcas B. Purdie; Henry Williams; John Purdie.
- 0635 **Williams Collection, Part 2, January 1858–December 1859.** 70 frames.
Major Topics: Literary interests; social life; farms and farming; art; travel; deaths.
Principal Correspondents: Catharine Williams; Dorcas B. Purdie; Francis H. Williams; H. H. Williams; John Purdie.
- 0705 **Ledger #2, [1740–1745].** 275 frames.
Major Topics: Financial records; prices.

PRINCIPAL CORRESPONDENTS INDEX

The following index is a guide to the major correspondents in this microfilm publication. The first number after each entry refers to the reel, while the four-digit number following the colon refers to the frame number at which a particular file folder containing correspondence by the person begins. Hence, 18: 0517 directs the researcher to the folder that begins at Frame 0517 of Reel 18. By referring to the Reel Index, which constitutes the initial section of this guide, the researcher will find the folder title, inclusive dates, and a list of Major Topics and Principal Correspondents, arranged in the order in which they appear on the film.

Adams, Charles Francis

18: 0517

Allinson, Mary

8: 0445

Almy, Anna

8: 0450

Almy, William

16: 0594–0596; 19: 0450

Aplin, Joseph

1: 0274; 6: 0219

Arnold, S. R.

8: 0495

Barker, Mary

16: 0599

Barnes, Roswell P.

16: 0001

Bolton, Aquila M.

14: 0267

Bowne, Amy Robinson

1: 0362–0400, 0762; 8: 0473; 10: 0059;

16: 0606

see also Robinson, Amy

Bowne, George

1: 0404

Bowne, R. L.

16: 0636

Bowne, R. R.

16: 0646

Bowne, Samuel

1: 0199, 0552

Boydell, Josiah

19: 0001

Bragg, John

20: 0029

Bragg, Joseph

19: 0603

Breed, Lydia

20: 0066

Brigham, Herbert Olin

1: 0179, 0199

Bringham, James

1: 0413, 0418; 14: 0274

Bringham, Joseph

1: 0406–0409

Brown, Dorcas

8: 0515; 20: 0001–0029, 0420–0475

see also Purdie, Dorcas B.

Brown, Moses

11: 0001–0004

Brown, Nancy S.

8: 0526

Brown, O. M.

20: 0001

Browne, John

20: 0066

Bryan, William

1: 0445

Burling, Elizabeth

20: 0420, 0761–0826; 21: 0001; 22: 0234,
0569

Burling, Mary

1: 0422

Burling, William

19: 0436, 0585; 20: 0420; 22: 0234

Canby, James
16: 0649

Carman, Catharine Williams
21: 0631–0673
see also Williams, Catharine

Carman, Margaret
22: 0531

Carman, Thomas
21: 0138, 0705, 0892

Carpenter, Caleb
1: 0424; 19: 0001

Carpenter, Richard
1: 0424

Chaloner, Job
1: 0426

Chase, Ann A.
8: 0528

Churchman, George
16: 0652

Clark, Ann
21: 0385

Clarke, Lewis L.
8: 0559; 14: 0277; 16: 0656; 22: 0172

Cocklain, Mary
19: 0357

Coggeshall, Elizabeth
5: 0071; 8: 0566; 14: 0287

Collins, D. E.
21: 0420

Collins, Deborah
2: 0828

Connell, Ezekiel
1: 0440–0443

Cornell, Rebecca
20: 0116

Crotch, William
16: 0658

Davidson, George
11: 0007

Delaplaine, Joseph
1: 0199, 0552

Docwray, Mary
1: 0429, 0455; 4: 0807

Dodson, Mary
1: 0448

Earl, Sarah
19: 0800

Ellery, Mehitabel
8: 0609

Emlen, Samuel, Jr.
4: 0802; 14: 0294

Evans, William
8: 0612

Falconer, Nathaniel
8: 0615

Farnums, E. H.
2: 0835

Farrington, Abraham
2: 0476

Fisher, Amy
18: 0517

Fisher, Deborah
8: 0619
see also Wharton, Deborah Fisher

Fisher, Esther
4: 0774; 6: 0283; 8: 0682
see also Smith, Esther Fisher Wharton
see also Wharton, Esther Fisher

Fisher, Hannah Rodman
1: 0468, 0496; 8: 0684

Fisher, Hetty
8: 0437

Fisher, Jabez Maud
8: 0854, 0878

Fisher, Joseph
6: 0343

Fisher, Joshua
2: 0515; 4: 0788; 6: 0343, 0352; 8: 0400;
9: 0001–0011; 18: 0517

Fisher, Miers
1: 0509–0514; 6: 0362; 8: 0344, 0410;
9: 0039

Fisher, Sally
1: 0519–0524; 4: 0865; 6: 0375

Fisher, Samuel
6: 0386

Fisher, Samuel R.
1: 0336; 2: 0302, 0320–0322; 4: 0774,
0865–0882; 6: 0379, 0450; 14: 0297

Fisher, Samuel Rowland
1: 0496, 0519, 0536–0538; 6: 0382; 8: 0344,
0400, 0410–0437; 9: 0044

Fisher, Thomas
1: 0509–0514; 4: 0882; 6: 0450; 8: 0344,
0410

Foulke, Elizabeth
1: 0545; 9: 0107; 14: 0386; 16: 0680–0736;
17: 0457, 0798

Franklin, Samuel
19: 0001

Franklin, Walter
1: 0199, 0552; 19: 0001

Fry, Dorcas
 20: 0100
Gardiner, Catharine
 16: 0736
Gardiner, John
 1: 0559; 8: 0236
Gilpin, Josiah
 9: 0426
Godfrey, Lawford
 1: 0563
Gorsuck, Rebecca
 17: 0001
Gould, John Stanton
 5: 0162
Grattan, Carolina Cary
 17: 0004
Grattan, Lucia Cary
 14: 0396; 17: 0015
Greene, Abigail
 20: 0001
Hadwin, Benjamin
 19: 0758
Hadwin, Charles
 20: 0076
Hadwin, Ruth
 19: 0398–0412, 0469–0540
see also Williams, Ruth Hadwin
Haines, Margaret
 1: 0565
Handy, Francis
 9: 0441
Harris, Joseph
 9: 0443
Hathaway, Nathaniel
 1: 0579
Haydock, Henry
 1: 0199, 0552
Hazard, Anna
 9: 0458
Hazard, Eliza R. G.
 2: 0333
Heathcote, Caleb
 1: 0199, 0590; 6: 0477
Heaton, Helena
 21: 0372–0385, 0766
Hildreth, H. O.
 18: 0517
Hill, Henry
 8: 0092
Holmes, John Haynes
 16: 0001
Hoover, Herbert
 6: 0512
Hubbard, Jeremiah
 21: 0507
Hubbard, Mary G.
 21: 0631
Hunter, Eliza
 11: 0696
Hunter, Mary
 11: 0685, 0696
Hunter, William
 17: 0033
Jackson, William
 18: 0517
Jaffray, Rob
 9: 0460
Jenkins, Anna A.
 9: 0462; 14: 0416; 17: 0036
Jones, Mary
 1: 0536
Jones, Rebecca
 2: 0310; 8: 0236, 0400; 14: 0421
Killey, E.
 19: 0800; 20: 0055
Kimber, Abigail
 11: 0416, 0601, 0817; 12: 0184
Kimber, Anna
 3: 0060; 11: 0822–0827; 12: 0001–0164
King, Eleanor
 19: 0357
King, Jane
 9: 0467
Knight, Elizabeth
 20: 0523–0675; 22: 0336–0487
Ladd, Thomas
 1: 0598
Leggett, Hannah H.
 21: 0507
Leggett, Thomas
 20: 0491; 22: 0304
Lewis, Mary
 1: 0601
Lightfoot, Thomas
 19: 0001
Lightfoot, William
 19: 0001
Logan, William
 1: 0604
Lyman, Thomas
 12: 0188

- Mason, Susan**
9: 0495
- Maule, Jacob**
2: 0841
- Maule, Joshua**
2: 0845
- Minturn, A. R.**
9: 0500
- Minturn, Mary**
9: 0504
- Minturn, Sally**
9: 0506
- Mitchell, Mary**
17: 0041
- Moore, Asa**
9: 0562
- Morris, Anna W.**
9: 0573
- Morris, Anthony**
9: 0576
- Morris, Margaret**
13: 0072
- Morris, Richard**
15: 0748
- Morton, Esther**
5: 0167, 0181–0521; 6: 0549; 7: 0299;
11: 0601, 0822–0827; 12: 0001–0184;
13: 0075; 17: 0334; 18: 0431–0517
see also Smith, Esther Morton
- Morton, Esther Robinson**
2: 0150; 10: 0702; 17: 0043
see also Robinson, Esther
- Morton, John**
1: 0406–0413, 0418, 0426, 0598, 0748–
0760, 0860–0865, 0888; 2: 0009, 0200–
0259, 0284, 0345–0348, 0465; 5: 0179,
0912; 6: 0001–0022, 0535–0543, 0563;
13: 0086; 14: 0221, 0426; 17: 0050–
0161, 0196, 0460, 0880; 18: 0084
- Morton, John, Jr.**
1: 0775; 6: 0535; 9: 0587; 14: 0470;
17: 0183
- Morton, Margaret**
9: 0622; 14: 0480
- Morton, Mary Robinson**
1: 0362–0400, 0545, 0559, 0601, 0748,
0760–0778, 0802–0852, 0879; 2: 0038–
0040, 0048, 0072–0108, 0135, 0150–
0170, 0259–0265, 0273–0284, 0315,
0339, 0472, 0848; 5: 0071, 0181–0873;
6: 0042–0065, 0543–0650, 0719;
8: 0566; 9: 0462, 0626; 10: 0106, 0702;
12: 0188; 13: 0081, 0089–0094;
14: 0221–0267, 0277, 0416, 0426,
0491–0832; 15: 0001, 0041–0176,
0384–0393, 0450; 16: 0606; 17: 0050,
0183–0313, 0420, 0561, 0758, 0896–
0937; 18: 0160, 0431
see also Robinson, Mary
- Morton, Robert**
2: 0853–0867; 5: 0167, 0525–0873; 9: 0666;
11: 0124; 17: 0334–0404
- Morton, Thomas**
2: 0324
- Mott, Eliza**
1: 0858; 17: 0412; 20: 0137, 0491–0523,
0611–0675, 0761–0826; 21: 0086, 0174,
0385–0420, 0507, 0569, 0729, 0805,
0929; 22: 0048–0123, 0304, 0420–0487
- Murray, Elsie**
13: 0111
- Needham, Alice**
1: 0860–0865
- Newberry, Benjamin**
1: 0199; 6: 0477
- Newton, Esther**
2: 0329
- Nichols, William S.**
13: 0217
- Noailles, Countess**
1: 0882–0885
- Noailles, Louis Marie**
1: 0879; 4: 0582
- Offley, Daniel**
1: 0888
- Ovington, Mary White**
9: 0671
- Parke, James Pemberton**
9: 0680
- Pearsall, Hanna**
5: 0879
- Pentecost, Joseph**
14: 0297
- Perry, Sarah**
10: 0427; 15: 0039
- Pinnington, Edward**
11: 0156
- Pollock, R.**
17: 0417
- Powell, Catharine**
17: 0420
- Priestman, Rachel**

20: 0001

Purdie, Dorcas B.

20: 0116–0137, 0573–0826; 21: 0372, 0420;
22: 0123, 0385–0635

see also Brown, Dorcas

Purdie, Eliza

20: 0611, 0894–0900

Purdie, John

20: 0761; 21: 0174; 22: 0569–0635

Purdie, Priscilla

21: 0021

Purinton, A.

19: 0625

Pyle, William

2: 0009

Raper, Caleb

13: 0230

Redwood, Abraham

10: 0023

Redwood, Hannah

10: 0027

Redwood, William

10: 0023, 0035

Richardson, Amy

1: 0199, 0604; 2: 0026, 0030; 4: 0805

Richardson, Ann

1: 0422

Richardson, Mary

2: 0028

Richardson, Thomas

1: 0199, 0308, 0563; 2: 0026–0038, 0457;
4: 0805; 10: 0702

Robinson, Abigail

1: 0199, 0770, 0789–0796; 2: 0040, 0048–
0135, 0147, 0889; 5: 0909; 6: 0532,
0584, 0719–0746; 8: 0445–0450;
9: 0443; 10: 0045; 11: 0004, 0158–
0181, 0449, 0584; 13: 0235; 14: 0494;
15: 0041–0176, 0450; 16: 0652;
17: 0004–0015, 0417, 0457–0561;
18: 0087, 0157, 0167

Robinson, Amy

2: 0145, 0288; 4: 0802, 0809; 5: 0179, 0879;
17: 0526, 0736–0743

see also Bowne, Amy Robinson

Robinson, Ann

10: 0097; 15: 0335; 17: 0758

Robinson, Anne A.

17: 0761

Robinson, Attmore

10: 0100

Robinson, Emma

15: 0342
Robinson, Esther
2: 0150; 10: 0702
see also Morton, Esther Robinson

Robinson, Franklin
15: 0350

Robinson, James
5: 0909; 11: 0601

Robinson, M. A.
10: 0106

Robinson, Mary
1: 0778; 2: 0288–0293; 8: 0236, 0400;
10: 0109; 15: 0352; 17: 0798
see also Morton, Mary Robinson

Robinson, Peter
14: 0297

Robinson, Polly
1: 0274, 0308; 2: 0033; 6: 0219

Robinson, Rowland
1: 0199, 0789–0796; 15: 0355, 0450;
17: 0877

Robinson, Samuel F.
15: 0358

Robinson, Sarah
1: 0404, 0802–0807, 0825, 0885; 2: 0153–
0170; 10: 0111; 14: 0832; 15: 0362;
17: 0736, 0880–0896

Robinson, Thomas
1: 0199, 0404, 0424, 0552, 0756, 0825;
2: 0200–0265, 0273–0284; 4: 0852;
5: 0912; 6: 0001–0042; 10: 0117;
13: 0260; 15: 0001; 16: 0658; 17: 0937;
19: 0001

Robinson, Thomas R.
10: 0702; 15: 0366

Robinson, William R.
15: 0369; 17: 0949

Robinson, William T.
1: 0193; 2: 0268; 6: 0065, 0768; 10: 0120;
11: 0181–0190; 17: 0949

Rodman, Clarke
1: 0572

Rodman, David
19: 0783–0819, 0863

Rodman, Mary
10: 0240

Rodman, Ruth
19: 0694

Rodman, Samuel
6: 0382, 0796; 10: 0167

Rodman, Sarah

Rodney, John
10: 0248

Rotch, Charity
2: 0315; 10: 0252

Rotch, Eliza
10: 0256

Rotch, Lydia
10: 0264

Rotch, Mary
19: 0398–0412, 0469, 0506–0550

Rotch, Thomas
2: 0320–0324; 10: 0271

Rotch, William
10: 0285

Rotch, William, Jr.
6: 0069; 10: 0275

Rowland, Isaiah
10: 0292

Russell, Susan S.
10: 0303

Seymour, Helen Minturn
10: 0702

Sharpless, Blakey
10: 0314

Sharpless, Catharine
2: 0329

Sherwood, Joseph
19: 0001

Shipley, Ann
15: 0376

Smith, Anna Wharton Wood
2: 0892; 3: 0732; 10: 0702; 12: 0454
see also Wood, Anna Wharton

Smith, Benjamin
11: 0193–0195

Smith, Benjamin R.
3: 0159, 0234, 0510, 0589–0732; 4: 0069, 0205; 10: 0351; 11: 0204–0227; 13: 0790–0793

Smith, Daniel
12: 0217

Smith, Daniel B.
2: 0872, 0898; 3: 0159–0510, 0613–0839; 4: 0001–0024, 0082; 6: 0217; 8: 0604; 18: 0081; 11: 0227–0399, 0584–0601; 12: 0191–0194, 0221–0368, 0431–0440; 13: 0948; 15: 0436

Smith, Esther Fisher Wharton
3: 0732; 4: 0295, 0774; 6: 0283; 8: 0437, 0682; 13: 0793, 0973; 14: 0010; 15: 0753

see also Fisher, Esther
see also Wharton, Esther Fisher

Smith, Esther Morton
4: 0046–0205; 6: 0512; 8: 0528; 9: 0301, 0430, 0580; 10: 0316, 0487, 0702; 11: 0158, 0190, 0204, 0416–0489, 0523, 0584; 12: 0356, 0405, 0424; 13: 0988; 16: 0113, 0289–0332; 17: 0761; 18: 0084–0087
see also Morton, Esther

Smith, H. L. Wharton
10: 0671

Smith, John Morton
11: 0601

Smith, Margaret H.
11: 0399

Smith, Margaret M.
3: 0589; 12: 0431

Smith, Mary Morton
4: 0046, 0123, 0265; 11: 0501; 12: 0221, 0405, 0424, 0440; 15: 0750

Smith, Ned
12: 0450

Smith, William Wharton
4: 0271; 6: 0519; 15: 0562

Stabler, Edward
2: 0336

Stead, William
19: 0001

Stewart, Francis
2: 0339

Tatnall, Joseph
2: 0345

Taylor, Isaac
2: 0348

Thomas, Evan
10: 0533

Thomas, Mary
2: 0145; 4: 0809

Thomas, Mary Robinson
10: 0535

Thurston, Amy
1: 0448, 0565, 0830–0843, 0858; 2: 0124, 0293, 0460, 0509; 15: 0379; 18: 0098

Thurston, William R.
1: 0760, 0852; 2: 0129–0133, 0147, 0460; 18: 0107

Till-Adams, William
10: 0545

Tilley, Benjamin
19: 0001

Turner, Jonas
4: 0880

Verigennes, Count de
9: 0205

Wagstaffe, Thomas
10: 0547

Waller, Catherine Rodman
10: 0205

Waln, Richard
2: 0465

Washington, George
9: 0205

Waterhouse, Daniel
6: 0217

Weeden, Peleg
19: 0625

Wharton, Charles
10: 0587

Wharton, Deborah Fisher
6: 0069; 10: 0590
see also Fisher, Deborah

Wharton, Edward
12: 0454

Wharton, Esther Fisher
4: 0295; 13: 0793; 14: 0010
see also Fisher, Esther
see also Smith, Esther Fisher Wharton

Wharton, Joseph, Jr.
10: 0650

Wharton, W. Rodman
10: 0675

Wharton, William
7: 0079

Whitall, H.
10: 0678; 15: 0381

Wickham, Sarah
10: 0681

Williams, Amy
2: 0472

Williams, Catharine
20: 0066, 0086–0100, 0137–0183, 0523–
0826; 21: 0263–0372, 0766–0929;
22: 0048–0172, 0336–0635
see also Carman, Catharine Williams

Williams, David
19: 0708–0722

Williams, Elizabeth
20: 0116

Williams, Francis H.
20: 0826; 21: 0729–0805; 22: 0487, 0635

Williams, Frederic
20: 0086

Williams, H. H.
20: 0720, 0826; 21: 0766; 22: 0261, 0531,
0635

Williams, Henry
20: 0183, 0448–0491, 0611, 0761; 21: 0086,
0174, 0385–0420, 0729; 22: 0172,
0288–0304, 0385–0420, 0569

Williams, James
19: 0722; 20: 0076, 0448, 0491; 22: 0261,
0304

Williams, John
19: 0357–0387, 0436, 0625; 20: 0420, 0491;
22: 0304

Williams, John, Jr.
19: 0550, 0585, 0722

Williams, John E.
19: 0625, 0680–0694, 0783; 20: 0137,
0894–0900; 21: 0263, 0892; 22: 0172,
0531

Williams, Mary
7: 0026; 10: 0690; 11: 0523; 15: 0384;
18: 0160–0167; 19: 0708, 0863;
20: 0611; 22: 0420

Williams, Nicholas
19: 0469, 0540, 0585–0603

Williams, Obadiah
19: 0498, 0572–0651, 0694–0722, 0783–
0819, 0863; 20: 0055–0100, 0420–0573;
22: 0234, 0288–0336

Williams, Ruth Hadwin
19: 0550–0572, 0612–0625, 0694–0863;
20: 0001–0055, 0076–0086, 0116,
0420–0448, 0611; 22: 0234
see also Hadwin, Ruth

Williams, Samuel
20: 0086, 0116–0137, 0420–0448, 0491–
0523, 0611; 21: 0001–0138, 0263–0299,
0729–0858; 22: 0048–0172, 0304–0336,
0420

Williams, Sarah
20: 0448

Williams, Sarah M.
21: 0138–0174

Williams, William
19: 0603

Wood, Anna Wharton
1: 0250, 0326; 2: 0676; 3: 0613; 7: 0001,
0066, 0141, 0438, 0541; 9: 0025, 0090,
0301, 0526, 0671; 10: 0205, 0429, 0549;
11: 0614; 12: 0823–0898, 0935;

Wood, Anna Wharton cont.

13: 0111; 14: 0056–0078; 15: 0516,
0612, 0782; 16: 0113

see also Smith, Anna Wharton Wood

Wood, Henry A.

16: 0108

Wood, Henry A., Jr.

16: 0591

Woolman, John

2: 0476

SUBJECT INDEX

The following index is a guide to the major topics in this microform publication. The first number after each entry refers to the reel, while the four-digit number following the colon refers to the frame number at which a particular file folder containing information on the subject begins. Hence, 20: 0116 directs the researcher to the folder that begins at Frame 0116 of Reel 20. By referring to the Reel Index, which constitutes the initial section of this guide, the researcher will find the folder title, inclusive dates, and a list of Major Topics and Principal Correspondents, arranged in the order in which they appear on the film.

- Abolition**
20: 0116, 0573
see also Slavery
- Abortion**
1: 0843
- Accidents and accident prevention**
2: 0838
- Africa**
3: 0510; 13: 0793
- African Americans**
1: 0326; 2: 0153; 6: 0450; 13: 0105
see also Free blacks
- Agriculture**
see Farms and farming
see Food and food industry
see Grains and grain products
see Irrigation
see Rice and rice industry
see Sugar and sugar industry
see Tobacco industry and products
- Alabama**
17: 0949
- Alcohol abuse**
2: 0223
- American Friends Service Committee**
5: 0104
- American Literary Association**
10: 0484
- American Philosophical Society**
3: 0839; 8: 0398
- American Revolution**
1: 0193, 0276, 0443; 2: 0268; 6: 0386;
8: 0854, 0878; 10: 0117; 13: 0284, 0407
- Amputation**
14: 0056
- Andover, Massachusetts**
3: 0613
- Annapolis, Maryland**
2: 0001
- Antigua**
1: 0453
- Apprenticeship**
1: 0590; 2: 0872; 6: 0477; 8: 0566;
10: 0027, 0702; 13: 0260; 14: 0386
see also Vocational education and training
- Arms control and disarmament**
16: 0001
- Art**
1: 0789; 3: 0589; 22: 0635
- Assault**
3: 0839
- Asthma**
2: 0038
- Astronomy**
9: 0509
- Austria**
treaties and conventions 9: 0205
Vienna 1: 0870
- Bancroft, Deborah**
8: 0466
- Bank of England Investigator's Office**
11: 0677
- Bankruptcy law**

2: 0302
Baptism
1: 0445
Barker, Joseph, Jr.
19: 0863
Barney, Jacob
20: 0248
Barratt, Elijah
9: 0509
Bedford, Gunning, Jr.
8: 0573
Belmont Hill School
16: 0591
Bermuda
1: 0870
Boarding houses
17: 0334
Boats and boating
4: 0429
Bonaparte, Napoleon
12: 0047–0083
Borden, Mary
1: 0415
Borden, Matthew
8: 0324
Borden, William
8: 0324
Borden family
1: 0229
Boston, Massachusetts
1: 0870; 2: 0001, 0093; 3: 0613; 8: 0684;
10: 0240, 0590; 13: 0260; 16: 0113
Botany
5: 0238, 0305; 8: 0604; 10: 0314; 12: 0237
Bower, Benjamin
6: 0221
Bower, John
6: 0221
Brazil
Rio de Janeiro 11: 0696–0812
Bridges
10: 0590
British Columbia
Indians 11: 0679
Brown, Dorcas
20: 0055
Brown, Obadiah
20: 0029
Buffalo, New York
5: 0873
Burges, Phebe

20: 0086
Burlington, New Jersey
11: 0349
Business and industry
1: 0199, 0424; 2: 0009; 6: 0001; 19: 0819;
20: 0116
see also Coal and coal mining
see also Employment
see also Farms and farming
see also Financial institutions
see also Fish and fishing industry
see also Food and food industry
see also Furs and fur trade
see also Glass and glass industry
see also Insurance and insurance industry
see also Leather industry and products
see also Liquor and liquor industry
see also Railroads
see also Rice and rice industry
see also Shipbuilding and repair
see also Ships and shipping
see also Shoes and shoe industry
see also Sugar and sugar industry
see also Textile industry and fabrics
see also Tobacco industry and products
Cambridge Trust Co.
16: 0521
Canada
8: 0878
Cancer
8: 0473; 9: 0205
Captives and captivity
Williams, Samuel 19: 0708
see also Impressment
Carman, Catharine
see Williams, Catharine
Case, Nathan
6: 0225
Cemeteries and funerals
6: 0487; 7: 0497; 10: 0487; 13: 0407;
15: 0450
see also Deaths
Chapin, Howard Millar
1: 0276
Chemistry
3: 0589; 4: 0123; 12: 0083
Childbirth
1: 0756, 0825; 2: 0124, 0277; 11: 0523;
13: 0787; 18: 0517; 20: 0329
see also Abortion
see also Midwives and midwifery

see also Pregnancy

Child rearing

1: 0778; 21: 0385

Children

1: 0833; 2: 0072, 0819, 0831; 3: 0510;
12: 0356; 17: 0050, 0183, 0196, 0896;
20: 0183, 0573, 0720; 21: 0729;
22: 0385, 0487

see also Childbirth

see also Orphans

see also Youth

China

22: 0048

Cholera

5: 0432; 16: 0666

Civil War

6: 0519; 21: 0001–0021, 0766–0805

Clark, Samuel W.

2: 0555

Clergy

1: 0836; 2: 0712

Clothing

1: 0468, 0536; 2: 0150, 0170; 5: 0800;
14: 0421; 15: 0342, 0393; 16: 0666

Coal and coal mining

17: 0880; 21: 0263

Cocartt, Jane

8: 0563

Colleges and universities

Harvard University 13: 0001

Haverford College 2: 0872; 4: 0001–0046;

7: 0026; 11: 0449, 0501; 12: 0237,

0356; 15: 0516; 16: 0108

Oberlin College 12: 0356

Philadelphia College of Pharmacy 3: 0839

Swarthmore College 7: 0141

Wellesley College 6: 0463

Colley, Thomas

1: 0431

Collins, Deborah

6: 0231

Collins Castle

9: 0526

Colonialism and colonial affairs

1: 0607; 3: 0510

see also American Revolution

see also Declaration of Independence

see also Quebec Act

see also Sugar Act

see also Tea Act

Columbia (ship)

11: 0812

Concord, Massachusetts

4: 0046

- Congress**
1: 0870; 2: 0216; 18: 0517
- Conkling, Roscoe**
3: 0510
- Connecticut**
1: 0748; 8: 0684; 9: 0090
- Contracts and agreements**
1: 0568; 2: 0468, 0701; 11: 0349; 17: 0940;
19: 0357; 22: 0234
see also Mortgages
see also Rent
- Cooper, Hannah**
6: 0234
- Cornwallis, Charles**
13: 0407
- Costigan-Wagner antilynching bill**
9: 0671
- Cost of living**
rent 1: 0807
- Courts**
2: 0479, 0709; 3: 0814; 16: 0649
- Courtship and engagement**
1: 0836; 2: 0133, 0465; 14: 0010; 17: 0050,
0896; 19: 0450, 0498, 0540; 20: 0183
see also Weddings
- Crebbin, William**
6: 0238
- Crime and criminals**
assault 3: 0839
forgery 11: 0677
general 9: 0025
piracy 1: 0870
prostitution 1: 0607
theft 3: 0060
- Cubbon, Thomas**
6: 0240
- Currency**
2: 0019, 0479; 19: 0783
- Davidson, George**
11: 0679
- Deaths**
Brown, Dorcas 20: 0055
Brown, Obadiah 20: 0029
execution 3: 0060
Fisher, Miers 6: 0366
Fisher family 6: 0242
Garfield, James A. 3: 0510
general 1: 0392, 0406, 0448, 0514, 0789,
0836; 2: 0024, 0038, 0048, 0223, 0273–
0277, 0348; 8: 0515; 12: 0217, 0768;
13: 0953; 14: 0221; 17: 0050–0161,
0412; 18: 0517; 19: 0585, 0722,
- Deaths cont.**
general cont.
0819–0842; 20: 0001, 0066, 0116,
0269–0329, 0448, 0573, 0675–0720;
21: 0337, 0385, 0507; 22: 0172, 0385,
0531, 0635
Hadwin, Amy 20: 0076
infant mortality 1: 0496, 0756; 2: 0108,
0659; 11: 0523
Jackson, Catharine 19: 0357
Mansfield, John M. 19: 0783
Mott, Eliza 17: 0952
Peabody, William H. 22: 0001
Rodman, Sarah 10: 0542
Williams, Ann 21: 0858; 22: 0261
Williams, Dorcas 19: 0450
Williams, Obadiah 20: 0611
Williams, Ruth Hadwin 20: 0611
Wood, Anna Wharton 14: 0143
see also Cemeteries and funerals
see also Suicide
- Debt**
1: 0579, 0756; 5: 0912; 8: 0875; 14: 0297;
19: 0001, 0469, 0498, 0722; 20: 0491;
22: 0304
- Declaration of Independence**
8: 0878
see also American Revolution
- Deeds and conveyances**
1: 0572, 0760; 5: 0912; 13: 0281; 20: 0248,
0420; 21: 0705
see also Property
- Delaware River settlement**
2: 0515
- Delgrave family**
1: 0445
- Dentists and dentistry**
3: 0613; 5: 0839
- Diseases and disorders**
asthma 2: 0038
cancer 8: 0473; 9: 0205
cholera 5: 0432; 16: 0666
dysentery 14: 0221
eye diseases and defects 2: 0223
fever 1: 0807, 0825
general 1: 0362–0400, 0409, 0426–0429,
0461, 0538–0545, 0775, 0836; 2: 0153,
0659; 8: 0236; 9: 0587; 10: 0590;
11: 0124, 0355; 13: 0701; 14: 0386,

0426; 15: 0041–0335, 0393; 19: 0387;
21: 0598
influenza 1: 0496
leprosy 1: 0770
measles 1: 0778
mental illness 2: 0153; 22: 0006
in Newport, Rhode Island 6: 0543, 0584
in Philadelphia, Pennsylvania 6: 0535, 0584
plague 1: 0531
rheumatism 1: 0843
scarlet fever 2: 0302
smallpox 1: 0468, 0843; 2: 0030, 0048,
0093, 0124, 0153, 0320–0322, 0515;
8: 0473; 10: 0240; 11: 0004; 13: 0075;
16: 0606; 19: 0357
typhoid 3: 0613
typhus 20: 0029
yellow fever 1: 0534, 0807; 2: 0093–0108,
0223–0265, 0273–0284; 6: 0856;
10: 0285; 13: 0598; 14: 0221, 0426
see also Health
see also Medicine and medical treatments

Domestic workers and services
1: 0802; 2: 0001, 0153; 20: 0761

Dysentery
14: 0221

Earl, John, Jr.
20: 0248

Earthquakes
22: 0123

Easton, Jonathan
1: 0458

Economic conditions
Great Britain 12: 0356

Education
1: 0885; 2: 0093–0108, 0831, 0872, 0898;
4: 0046; 5: 0525–0689, 0771–0826;
11: 0501; 12: 0301; 15: 0436; 17: 0404;
21: 0420, 0858; 22: 0006, 0420, 0531
see also Colleges and universities
see also Schools
see also Students
see also Teachers

Electric vehicle batteries
13: 0953

Emancipation
2: 0324; 12: 0356
see also Abolition
see also Manumission
see also Slavery

Employment

14: 0494; 21: 0507
see also Apprenticeship
see also Business and industry
see also Domestic workers and services
see also Indentured servitude
see also Military personnel
see also Vocational education and training

Engagement
see Courtship and engagement

Fairfax Institute, Washington, D.C.
4: 0001

Family life
2: 0310; 11: 0204; 14: 0494; 16: 0113;
22: 0288, 0420–0487
see also Marriage

Farms and farming
1: 0756; 2: 0872; 12: 0898; 19: 0585, 0612–
0625, 0842; 20: 0100, 0137, 0420–0448,
0491–0523, 0826; 21: 0001–0021, 0138,
0337, 0766–0805; 22: 0261, 0304–0336,
0635

Ferris, A. M.
8: 0617

Financial institutions
1: 0509; 2: 0200, 0479; 11: 0677; 20: 0076

Financial records
1: 0892; 2: 0174; 4: 0313–0338, 0373–0468,
0520–0557, 0582; 7: 0730; 8: 0324;
15: 0517, 0594; 18: 0001; 19: 0680–
0694, 0758–0800; 20: 0523–0675;
22: 0172, 0336–0487, 0705
see also Debt
see also Investments
see also Mortgages
see also Receipts and invoices
see also Settlement of accounts

Fire
2: 0040; 9: 0090; 10: 0271; 21: 0263

Fish and fishing industry
2: 0892; 4: 0271
see also Whaling and whaling products

Fisher, Deborah
6: 0246; 8: 0648; 18: 0517

Fisher, Esther
1: 0461; 6: 0270, 0289–0308

Fisher, George P.
8: 0573

Fisher, Hannah Rodman
5: 0084; 6: 0317; 8: 0684–0845; 10: 0143,
0590; 12: 0788, 0817

Fisher, James

8: 0875
Fisher, John
8: 0573

Fisher, Joshua
1: 0461, 0507, 0568; 2: 0771; 6: 0270,
0346–0349, 0354–0357; 9: 0025;
11: 0682; 18: 0517

Fisher, Miers
1: 0531; 6: 0366

Fisher, Samuel R.
1: 0531–0534; 2: 0515; 4: 0849; 7: 0272

Joshua Fisher & Sons
1: 0501; 2: 0336; 8: 0437; 18: 0175

Fisher family
1: 0519, 0534; 2: 0515; 6: 0242; 7: 0083,
0141; 9: 0025, 0301, 0526, 0573;
10: 0675; 16: 0666, 0798

Flags
13: 0159

Florida
11: 0227

Food and food industry
recipes 1: 0825; 15: 0539; 20: 0183, 0329
see also Fish and fishing industry
see also Grains and grain products
see also Liquor and liquor industry
see also Rice and rice industry
see also Sugar and sugar industry

Ford Curtoys & Co.
9: 0087

France
education of nobility 1: 0885
general 2: 0848; 11: 0817; 13: 0793
immigrants to Newport, Rhode Island
13: 0195; 15: 0612
immigrants to northern Pennsylvania
13: 0111
language 2: 0108
naval forces 1: 0276
Paris 1: 0870; 2: 0001; 8: 0604
Revolution 4: 0082, 0582

Franklin, Matthew
20: 0329

Free blacks
16: 0656
see also African Americans

Freemasonry
20: 0076

Furs and fur trade
2: 0515

Garfield, James A.
3: 0510

Genealogy

Fisher family 2: 0515; 10: 0675
general 1: 0116; 6: 0759, 0778; 12: 0780,
0823; 15: 0569–0586; 20: 0248
Hazard family 6: 0463
Rodman family 10: 0205
Scott family 7: 0044
Smith family 1: 0326
Thayer family 7: 0044
Wanton family 1: 0055, 0184, 0250;
6: 0072; 7: 0066; 15: 0782
Welby family 6: 0203

Germantown Friends School

7: 0497

Germany

13: 0793

Gifts and private contributions

10: 0040; 12: 0188

Glass and glass industry

7: 0599

Glassell family

16: 0749

Government officials

2: 0479; 13: 0284

Grains and grain products

2: 0345; 9: 0087; 10: 0650; 17: 0161
see also Grain storage and facilities

Grain storage and facilities

2: 0153; 19: 0819

Great Britain

economic conditions 12: 0356
foreign trade 6: 0526; 9: 0684
general 1: 0552, 0607; 2: 0006, 0515;
3: 0510; 5: 0912; 8: 0344; 10: 0650,
0702; 12: 0450
king of England 16: 0680
London, England 1: 0870; 2: 0001
military forces 10: 0117
navy 19: 0482, 0540

Greek history

5: 0800

Gurney, Joseph John

20: 0523

Hadwin, Amy

20: 0076

Hallowell, Benjamin

9: 0436

Hanbury, Mary

20: 0001

Harbors and ports

11: 0690

Harrisburg, Pennsylvania

3: 0814

Hart, John

1: 0568

Hartford, Connecticut

1: 0870

Harvard University

13: 0001

Hathaway, Elizabeth

1: 0570–0577

Haverford College

2: 0872; 4: 0001–0046; 7: 0026; 11: 0449,
0501; 12: 0237, 0356; 15: 0516;
16: 0108

Haverford School

9: 0455; 12: 0898

Haverford School Association

15: 0450

Hayes, Lucy

10: 0590

Hayes, Rutherford B.

10: 0590

Hayward, Lydia

4: 0429

Hazard, Caroline

6: 0463

Hazard, Thomas

18: 0517

Hazard family

6: 0463

Health

1: 0400, 0422, 0426, 0496, 0514, 0545,
0770, 0796–0802, 0821–0833, 0843–
0852; 2: 0026, 0048, 0077, 0093;
5: 0071; 14: 0494; 17: 0050, 0161–
0183, 0420, 0460, 0561, 0880, 0896–
0937; 18: 0087, 0160; 19: 0550–0585,
0842; 20: 0001, 0137, 0491, 0573–0611,
0720–0761, 0900; 21: 0021, 0138,
0211–0263, 0385–0420, 0507, 0673–
0766, 0929; 22: 0048–0123, 0336–0569

see also Diseases and disorders

see also Medicine and medical treatments

Heathcote, Caleb

1: 0199

Hicksite Quakers

20: 0066, 0086, 0475; 22: 0288

Hill, Richard, Jr.

6: 0481; 7: 0698; 12: 0902

Hill, Thomas

6: 0487

Hill Bissets & Co.

8: 0092

Hoag, Joseph

20: 0329

Hoar, Sherman

6: 0500

Holmes, Samuel

1: 0593

Hoover, Herbert

16: 0284

Horses

1: 0563

Household furnishings

1: 0229, 0882; 3: 0613; 10: 0415; 12: 0791;

13: 0407; 15: 0428, 0750; 18: 0152

Howell, Anna Hazen

6: 0514

Howell, Arthur

7: 0497

Hunt, James Henry Leigh

9: 0580

Hunter, Anne Fisher

11: 0696

Hunter, William

11: 0696

Impressment

19: 0482, 0540

Indentured servitude

2: 0072; 3: 0041; 6: 0450; 9: 0470; 11: 0195

India

11: 0007; 20: 0183; 22: 0048

Indians

of British Columbia 11: 0679

Cherokee 11: 0113, 0193

general 2: 0515, 0819; 4: 0282; 6: 0386;

7: 0120; 10: 0590, 0702; 14: 0001;

21: 0631, 0705

medicine 9: 0205

missions to 21: 0507

Otoe 9: 0112

treaties and conventions 14: 0221

Infant mortality

1: 0496, 0756; 2: 0108, 0659; 11: 0523

Influenza

1: 0496

Inoculations

2: 0238, 0320; 19: 0357

Insurance and insurance industry

1: 0501; 10: 0700; 11: 0355, 0682; 19: 0001

Investments

21: 0086, 0337

Iowa

20: 0329

Ireland

8: 0344; 12: 0221

Irrigation

3: 0130

Italy

13: 0793

Jackson, Catharine

19: 0357

Jamestown, Rhode Island

9: 0090

Japan

11: 0007

La Farge, Oliver

12: 0904

Land ownership and rights1: 0415; 2: 0468, 0537; 19: 0357–0387,
0436**Law Academy of Philadelphia**

1: 0283

Lawyers and legal services

1: 0283; 6: 0346; 13: 0407; 18: 0517

Leather industry and products

4: 0313, 0373; 18: 0517; 19: 0694

L'Enfant Plaza, Washington, D.C.

10: 0702

Leprosy

1: 0770

Lexington, Massachusetts

13: 0159

Libel and slander

5: 0305

Libraries

12: 0237

Liquor and liquor industry

1: 0579; 9: 0470; 10: 0590

Literature

2: 0349, 0867; 4: 0082; 11: 0626, 0696;

12: 0237; 14: 0294; 18: 0175, 0517;

20: 0269, 0826; 22: 0048, 0420, 0635

Loans*see* Mortgages**London, England**

1: 0870; 2: 0001

Ludley, Harriet

20: 0329

Lundholm, Eric Mauritz

12: 0930

Lundholm, Theorina

12: 0930

Lynching

see Costigan-Wagner antilynching bill

Machinery and equipment

7: 0599

Mansfield, John M.

19: 0783

Manumission

9: 0001; 10: 0248; 18: 0517

see also Abolition

see also Emancipation

see also Slavery

Marriage

1: 0413, 0426, 0468, 0524, 0536, 0559,
0598, 0789, 0836–0843, 0860; 2: 0030,
0072, 0135, 0310; 9: 0491; 13: 0094;
15: 0450; 17: 0050, 0798; 20: 0329,
0675; 21: 0372, 0858

see also Courtship and engagement

see also Weddings

see also Widows and widowers

Maryland

Annapolis 2: 0001

property in 6: 0650

Massachusetts

Andover 3: 0613

Boston 1: 0870; 2: 0001, 0093; 3: 0613;
8: 0684; 10: 0240, 0590; 13: 0260;
16: 0113

Concord 4: 0046

general 13: 0159

Lexington 13: 0159

Nantucket 10: 0167

New Bedford 3: 0589; 4: 0205; 9: 0526;
10: 0275

Waltham 3: 0613; 6: 0487; 7: 0031;
16: 0113

Massachusetts Anti-Tuberculosis Society

3: 0613

Measles

1: 0778

Medicine and medical treatments

2: 0077, 0093, 0867; 3: 0041, 0787; 6: 0799;
9: 0205; 11: 0124; 12: 0133; 14: 0056,
0221, 0416; 16: 0080, 0680; 20: 0329,
0720; 21: 0598, 0631

see also Diseases and disorders

see also Health

see also Inoculations

see also Midwives and midwifery

Membership organizations

see American Literary Association

see American Philosophical Society

see Haverford School Association

see Massachusetts Anti-Tuberculosis
Society

see New England Society

see Preservation Society of Newport County

Mental illness

1: 0607; 2: 0153; 22: 0006

C. B. Metcalf Highland School

21: 0805

Meteorology

9: 0509

Midwives and midwifery

12: 0930

Mifflin, Lloyd

9: 0497

Mifflin, Thomas

4: 0298

Military bases, posts, and reservations

2: 0676; 5: 0839; 9: 0090

Military conflicts and wars

see American Revolution

see Civil War

see War of 1812

see World War II

Military forces

American colonies 2: 0476; 6: 0386

Great Britain 10: 0117; 13: 0284

Spain 1: 0870

U.S. 10: 0702

see also Military personnel

see also Naval forces

Military personnel

1: 0193; 12: 0454; 13: 0260

see also Military forces

see also Military training

Military training

16: 0001

Mineral springs

9: 0112

Missions and missionaries

20: 0183, 0675; 21: 0507, 0631, 0705;
22: 0048

Monuments and memorials

7: 0497; 10: 0702

Moore, Charles

8: 0398; 11: 0121

Moore, Hannah

6: 0528

Moore, Milcah Martha

13: 0067

Mortgages

2: 0223–0238; 4: 0001; 16: 0602

Morton, John

2: 0479

Morton family

1: 0778

Mott, Eliza

17: 0952

Murray, Ellen

13: 0105

Music

21: 0385

Nantucket, Massachusetts

10: 0167

National Association for the Advancement of Colored People (NAACP)

9: 0671

National Political Peace Campaign

16: 0001

Native Americans

see Indians

Naval forces

in Chesapeake Bay 1: 0443

France 1: 0276

Great Britain 19: 0482, 0540

see also Military forces

Nebraska

7: 0120; 9: 0112

New Bedford, Massachusetts

3: 0589; 4: 0205; 9: 0526; 10: 0275

New England Society

12: 0188

New Jersey

Burlington 11: 0349

governor of 1: 0868

property 2: 0898; 11: 0156

Sea Isle 3: 0613

New Lights

17: 0161; 18: 0087

New London, Connecticut

1: 0870

Newport, Rhode Island

1: 0199, 0545, 0555, 0572, 0775, 0807,
0870; 2: 0001, 0093, 0712, 0797, 0809,
0889–0892; 3: 0234; 4: 0046, 0205,
0271; 5: 0703; 6: 0543, 0584; 7: 0127;
10: 0040; 11: 0227, 0696; 12: 0047;
13: 0195, 0260, 0284; 14: 0426;
15: 0612; 17: 0880; 18: 0084; 20: 0183

Newspapers

1: 0775; 4: 0479; 18: 0517

New York City

2: 0277, 0828; 4: 0123; 21: 0729

New York State

Buffalo 5: 0873
general 1: 0552; 10: 0650; 19: 0625;
20: 0420

Nine Partners 19: 0412

Saratoga Springs 5: 0839

see also New York City

Nidderaugh family

6: 0238

Nine Partners, New York

19: 0412

Noailles, Countess

2: 0048, 0676; 15: 0586

Noailles, Louis Marie

2: 0676, 0848; 13: 0284, 0407, 0701;
15: 0586–0612; 16: 0606

Oberlin College

12: 0356

Ohio

19: 0387, 0612–0625; 20: 0100

Olney, George

1: 0892

Orphans

16: 0649

Otoe Indians

9: 0112

Paine, Thomas

22: 0172

Paris, France

1: 0870; 2: 0001; 8: 0604

Parr & Bulheley

9: 0684

Peabody, William H.

22: 0001

Peace movement

see National Political Peace Campaign

Penn, William

2: 0515

Pennsylvania

French immigration to 13: 0111

general 2: 0479; 4: 0275; 6: 0526; 10: 0590;
19: 0842

Harrisburg 3: 0814

Philadelphia 1: 0409, 0453, 0534, 0538,
0748, 0807, 0870; 2: 0001–0006, 0223–
0238, 0273, 0479; 3: 0839; 4: 0046,
0884; 6: 0535, 0584, 0856; 10: 0117;
13: 0407, 0598–0701; 14: 0426;
16: 0666

Philadelphia College of Pharmacy

3: 0839

Philadelphia, Pennsylvania

1: 0409, 0453, 0534, 0538, 0748, 0807,
0870; 2: 0001–0006, 0223–0238, 0273,
0479; 3: 0839; 4: 0046, 0884; 6: 0535,
0584, 0856; 10: 0117; 13: 0407, 0598–
0701; 14: 0426; 16: 0666

Philosophy

5: 0238

Photography

9: 0500

Pioneers

13: 0111

Piracy

1: 0870

Plymouth Company

2: 0537

Poetry

1: 0524; 2: 0515, 0555, 0712, 0819; 3: 0613;
4: 0287; 5: 0084; 6: 0532; 7: 0141,
0497; 8: 0466, 0505, 0571, 0617, 0648;
9: 0205, 0436, 0489, 0497, 0526, 0688,
0804; 10: 0042–0045, 0143, 0542, 0646;
11: 0399, 0549; 13: 0980; 14: 0197;
15: 0624; 16: 0332; 18: 0175, 0517;
19: 0450; 20: 0029, 0269–0329, 0573;
22: 0172

Political parties

20: 0116

Politics and political issues

3: 0510, 0839; 16: 0001; 20: 0491; 21: 0299,
0858; 22: 0048

see also American Revolution

see also Political parties

Portsmouth, Rhode Island

11: 0614

Poverty

1: 0455; 2: 0310, 0831; 3: 0060; 4: 0275

Pregnancy

1: 0807

see also Childbirth

Preservation Society of Newport County

16: 0591

Prices

1: 0509; 2: 0771; 22: 0705

Prisons and prisoners

15: 0041; 20: 0055

see also Captives and captivity

see also Impressment

Property

1: 0458, 0579; 2: 0205, 0302, 0537, 0709,
0889, 0898; 4: 0001, 0123; 6: 0650;

8: 0400; 10: 0650; 11: 0156, 0349; 21: 0086
12: 0301; 13: 0235; 14: 0297; 17: 0743;
19: 0819; 22: 0006
see also Deeds and conveyances
see also Land ownership and rights
see also Mortgages

Prostitution
1: 0607

Providence, Rhode Island
1: 0748; 2: 0001; 11: 0004

Providence School
20: 0183

Prussia
treaties and conventions 9: 0205

Quaker meetings
1: 0545, 0565; 2: 0841; 8: 0751, 0854, 0878;
11: 0113; 12: 0301; 14: 0277; 16: 0680;
19: 0758, 0819; 20: 0066, 0137, 0420;
21: 0729, 0892; 22: 0006, 0385

Quakers
convention 8: 0236
disowned members 12: 0301–0356
education 15: 0436
exile of 1: 0336; 4: 0793, 0849, 0865–0880,
0884
general 1: 0552–0555; 2: 0479; 5: 0104;
10: 0307, 0702; 13: 0159; 16: 0001;
19: 0357; 20: 0066, 0137–0183, 0448–
0475; 21: 0211; 22: 0234, 0288
marriage 1: 0843
military service 12: 0454
religious divisions 20: 0076, 0137
Wilbur schism 20: 0420
see also Hicksite Quakers
see also Quaker meetings

Quebec Act
8: 0878

Railroads
10: 0275, 0351; 21: 0263

Raper, Joshua
6: 0713–0715; 9: 0686

Raper, Abigail
6: 0707

Raper, Caleb
6: 0710

Receipts and invoices
6: 0221; 8: 0001; 10: 0001; 13: 0233;
15: 0417; 18: 0175, 0517
see also Financial records
see also Settlement of accounts

Reconstruction

Recreational activities

2: 0129, 0310

see also Sports and athletics

see also Travel and tourism

Redwood, Patience

2: 0011

Redwood, Samuel H.

2: 0014

Redwood, William

18: 0517

Redwood family

7: 0083; 9: 0301, 0526; 10: 0040

Religion

1: 0860–0865; 2: 0129; 3: 0589; 4: 0082;
19: 0412, 0550, 0651, 0800; 20: 0448–
0475, 0523–0573, 0761; 21: 0263,
0385–0420, 0631; 22: 0123–0172, 0261,
0304–0336, 0569

see also Clergy

see also Missions and missionaries

see also New Lights

see also Quakers

Rent

1: 0807

Reserve Officers' Training Corps

16: 0001

Revolutionary War

see American Revolution

Rheumatism

1: 0843

Rhode Island

British forces in 13: 0284

currency 2: 0019

general 1: 0458, 0552; 2: 0709; 9: 0470;
10: 0351

Jamestown 9: 0090

Newport 1: 0199, 0545, 0555, 0572, 0775,
0807, 0870; 2: 0001, 0093, 0712, 0797,
0809, 0889–0892; 3: 0234; 4: 0046,
0205, 0271; 5: 0703; 6: 0543, 0584;
7: 0127; 10: 0040; 11: 0227, 0696;
12: 0047; 13: 0195, 0260, 0284;
14: 0426; 15: 0612; 17: 0880; 18: 0084;
20: 0183

Portsmouth 11: 0614

Providence 1: 0748; 2: 0001; 11: 0004

Rice and rice industry

9: 0470

Richardson, Ann

2: 0024

Richardson, Ebenezer

1: 0179

Richardson, M. G.

10: 0042

Richardson, Thomas

1: 0179, 0199, 0590; 6: 0477; 7: 0725;
11: 0549; 15: 0393

Richardson, William

8: 0324

Rio de Janeiro, Brazil

11: 0696–0812

Riots and disorders

13: 0260

Ripley School

6: 0500

Robinson, Abigail

2: 0042; 4: 0520; 7: 0653, 0730; 8: 0001;
15: 0428; 17: 0880; 18: 0517

Robinson, Elizabeth

10: 0129

Robinson, Mary

11: 0696

Robinson, R. T.

10: 0115

Robinson, Rowland

4: 0468

Robinson, Sarah

13: 0281

Robinson, Thomas

2: 0174, 0712, 0797, 0809; 4: 0338, 0575–
0582; 6: 0759; 7: 0497, 0653; 8: 0324;
13: 0281; 17: 0940; 18: 0175, 0517

Robinson, William

4: 0313, 0373; 13: 0260; 17: 0033

Robinson family

papers 1: 0001–0892; 2: 0001–0898;
3: 0001–0839; 4: 0001–0884; 5: 0001–
0912; 6: 0001–0856; 7: 0001–0730;
8: 0001–0878; 9: 0001–0804; 10: 0001–
0702; 11: 0001–0827; 12: 0001–0935;
13: 0001–0988; 14: 0001–0832;
15: 0001–0802; 16: 0001–0798;
17: 0001–0952; 18: 0001–0517;
19: 0001

Rodman, Elizabeth

1: 0316

Rodman, Hugh

16: 0284

Rodman, Julia A.

1: 0316

Rodman, Samuel

1: 0316; 6: 0778

Rodman, Sarah

6: 0856; 8: 0845; 10: 0150, 0542

Rodman family

1: 0468, 0534, 0833–0836; 7: 0083; 9: 0301,
0526; 10: 0205

Rotch, Charity

7: 0020; 18: 0517

Rotch, Elizabeth

6: 0778

Rotch, Thomas

19: 0387

Rotch family

6: 0799; 7: 0001

Russia

9: 0112, 0205, 0580

Sampson, Ezra

20: 0329

Saratoga Springs, New York

5: 0839

Scarlet fever

2: 0302

Schools

Belmont Hill School 16: 0591

boarding 2: 0153; 20: 0029, 0100, 0448;
21: 0021–0086, 0299; 22: 0048

deaf and dumb 5: 0800

general 12: 0164; 20: 0137, 0675, 0761;
21: 0470, 0631–0705; 22: 0123, 0569

Germantown Friends School 7: 0497

Haverford School 9: 0455; 12: 0898

C. B. Metcalf Highland School 21: 0805

military 17: 0334

Providence School 20: 0183

Quaker schools 2: 0089; 6: 0584

Ripley School 6: 0500

see also Colleges and universities

see also Education

see also Students

see also Teachers

Science and technology

11: 0007

see also Astronomy

see also Botany

see also Chemistry

see also Meteorology

Scotland

4: 0046

Scott family

genealogy 7: 0044

Sea Isle, New Jersey

3: 0613

Servants

see Domestic workers and services

see Indentured servitude

Settlement of accounts

8: 0410; 19: 0625, 0651, 0758; 21: 0729–
0766

see also Financial records

see also Receipts and invoices

Shipbuilding and repair

13: 0284; 15: 0782

Ships and shipping

1: 0453, 0501, 0746, 0775; 2: 0006, 0033,
0153, 0238, 0345, 0712–0797, 0809;
4: 0812; 5: 0912; 6: 0001, 0386;
7: 0709; 8: 0092, 0344, 0400, 0854,
0878; 9: 0039, 0087; 10: 0271, 0545,
0650, 0700; 11: 0682, 0690, 0812;
13: 0260; 14: 0221, 0297; 15: 0450;
17: 0940; 18: 0175, 0517; 19: 0001,
0357; 20: 0276

see also Boats and boating

see also Shipbuilding and repair

Shoes and shoe industry

10: 0545

Silk

15: 0436

Slavery

9: 0001–0011; 10: 0292, 0702; 12: 0356;
20: 0183; 21: 0766–0805

see also Abolition

see also Emancipation

see also Manumission

see also Slave trade

Slave trade

2: 0220; 6: 0022–0042; 13: 0260; 18: 0517

Smallpox

1: 0468, 0843; 2: 0030, 0048, 0093, 0124,
0153, 0320–0322, 0515; 8: 0473;
10: 0240; 11: 0004; 13: 0075; 16: 0606;
19: 0357

Smith, Anna Wharton

see Wood, Anna Wharton Smith

Smith, Benjamin R.

10: 0316, 0359, 0429; 16: 0749; 18: 0001

Smith, Daniel B.

10: 0484; 13: 0946

Smith, Edward Wanton

13: 0953

Smith, Esther Morton

12: 0418, 0791; 13: 0980; 15: 0624;
16: 0508

Smith, William Wharton

1: 0283

Smith family

genealogy 1: 0326

Social life

2: 0828, 0889; 3: 0234, 0589; 4: 0046, 0205;
5: 0709; 11: 0204, 0696; 13: 0407;
14: 0494; 15: 0450; 16: 0113; 17: 0043–
0050, 0196, 0313–0334, 0420–0457,
0526–0561, 0743, 0761–0798; 18: 0098,
0112, 0431–0517; 19: 0357, 0398, 0482,
0506, 0550, 0585, 0625; 20: 0029, 0116,
0183, 0523, 0761–0826; 21: 0086, 0211,
0337, 0858–0892; 22: 0123, 0420,
0569–0635

see also Courtship and engagement

see also Weddings

Social sciences

see Greek history

see Philosophy

Society of Friends

see Quakers

Spain

military forces 1: 0870

Speeches and addresses

Washington, George 1: 0870

Sports and athletics

3: 0613

Stone, Charles F.

7: 0031

Students

12: 0237; 13: 0787; 15: 0381; 20: 0183,
0276

see also Education

see also Youth

Sugar Act

9: 0470

Sugar and sugar industry

9: 0470

Suicide

1: 0888; 20: 0611

see also Deaths

Swanson, Christopher

2: 0342

Swarthmore College

7: 0141

Taxation

estate tax 14: 0152

inheritance tax 3: 0787

poor tax 12: 0237

Tea Act

9: 0684

Teachers

2: 0216–0220; 4: 0001–0024; 20: 0086

see also Education

- Temperance movement**
12: 0221; 20: 0116
- Textile industry and fabrics**
2: 0170; 4: 0371; 15: 0436; 17: 0758
see also Clothing
see also Silk
see also Wool and wool trade
- Thayer family**
genealogy 7: 0044
- Thomson, James**
2: 0349; 18: 0175
- Tobacco industry and products**
2: 0033, 0336
- Tomb of the Unknown Soldier War Memorial**
7: 0497
- Torpedoes**
2: 0892
- Trade**
6: 0526; 9: 0470, 0684; 15: 0436
see also Slave trade
- Transportation**
see Railroads
see Shipbuilding and repair
see Ships and shipping
- Travel and tourism**
1: 0468, 0545, 0601–0604, 0748, 0843–0852; 2: 0026, 0038, 0048, 0659; 3: 0613; 5: 0084, 0703, 0873; 8: 0615, 0619, 0684; 10: 0702; 13: 0793; 14: 0396; 17: 0193–0196, 0334, 0877–0880; 18: 0081, 0431; 19: 0572, 0612–0625; 20: 0076, 0100; 22: 0385, 0635
- Treaties and conventions**
Austria-Prussia-Russia 9: 0205
Indians 14: 0221
- Typhoid**
3: 0613
- Typhus**
20: 0029
- Vienna, Austria**
1: 0870
- Vining, Mary**
7: 0141
- Virginia**
Winchester 4: 0865, 0884
- Vocational education and training**
1: 0326
see also Apprenticeship
- Wagstaff, Thomas**
2: 0515
- Waltham, Massachusetts**
3: 0613; 6: 0487; 7: 0031; 16: 0113
- Wanton, Edward**
1: 0250; 6: 0072–0095; 7: 0670
- Wanton, Gideon T.**
2: 0530
- Wanton, Joseph**
7: 0670
- Wanton, Philip**
2: 0468
- Wanton family**
1: 0055, 0184, 0250; 5: 0162; 6: 0072–0095; 7: 0066; 15: 0782
- War Department, U.S.**
1: 0870
- Warner, Lydia Fisher**
10: 0702
- War of 1812**
19: 0625–0651, 0783
see also Impressment
- Washington, George**
1: 0870
- Washington, D.C.**
Fairfax Institute 4: 0001
L'Enfant Plaza 10: 0702
- Water supply and use**
mineral springs 9: 0112
see also Irrigation
- Watkins, Mary**
20: 0329
- Weather**
17: 0050, 0193; 21: 0263–0299, 0631; 22: 0123
- Weddings**
1: 0199, 0833; 2: 0048; 5: 0084; 12: 0083; 21: 0001
see also Courtship and engagement
see also Marriage
- Welby family**
genealogy 6: 0203
- Wellesley College**
6: 0463
- Welsh, Herbert**
14: 0001
- Whaling and whaling products**
9: 0526; 13: 0260; 15: 0421
see also Fish and fishing industry
- Wharton, Deborah Fisher**
7: 0083–0120; 18: 0152
- Wharton, Esther**
7: 0127
- Wharton, Joseph**

7: 0141; 9: 0509; 10: 0646

Wharton, William

6: 0205; 14: 0040

Wharton family

4: 0298; 7: 0079–0083, 0141–0240; 9: 0301,
0573; 16: 0798

White, Walter F.

9: 0671

Widows and widowers

1: 0559; 2: 0465

Williams, Ann

21: 0858; 22: 0261

Williams, Catharine

20: 0029–0055, 0276; 21: 0086; 22: 0006

Williams, Charles T.

22: 0006

Williams, David

20: 0248

Williams, Dorcas

19: 0450

Williams, Frederick

20: 0055

Williams, Jonathan

20: 0248, 0276

Williams, Nicholas

19: 0469–0498

Williams, Obadiah

20: 0248, 0329, 0573–0611

Williams, Ruth Hadwin

20: 0611

Williams, Samuel

20: 0329

Williams family

9: 0301; 19: 0264–0863; 20: 0001–0900;
21: 0001–0929; 22: 0001–0705

Wills and estates

Collins, Deborah 6: 0231

Cooper, Hannah 6: 0234

Fisher, Samuel R. 2: 0515

general 1: 0570, 0577–0579, 0593, 0868;

2: 0676, 0845, 0853; 3: 0001–0041,

0839; 4: 0001–0024; 6: 0308, 0343,

0354; 10: 0549, 0650; 12: 0914;

13: 0217; 17: 0896; 19: 0842; 20: 0137,

0248; 21: 0086; 22: 0420

Hazard, Thomas 18: 0517

Hill, Richard, Jr. 6: 0481; 7: 0698

Moore, Hannah 6: 0528

Moore, Milcah Martha 13: 0067

Raper, Abigail 6: 0707

Raper, Caleb 6: 0710

Raper, Joshua 6: 0713–0715

- Redwood, Patience 2: 0011
 Redwood, Samuel H. 2: 0014
 Richardson, Thomas 7: 0725; 11: 0549;
 15: 0393
 Robinson, Abigail 2: 0042; 7: 0653, 0730
 Robinson, Thomas 7: 0653
 Rotch, Charity 7: 0020; 18: 0517
 Swanson, Christopher 2: 0342
 Wanton, Edward 7: 0670
 Wanton, Joseph 7: 0670
 Wharton, Anna 18: 0152
 Williams, Catharine 22: 0006
 Williams, Charles T. 22: 0006
 Williams, Jonathan 20: 0276
 Wood, Anna Wharton 14: 0145, 0160
- Winchester, Virginia**
 Quaker exile to 4: 0865, 0884
- Wister, Sarah Logan**
 7: 0246
- Women**
 1: 0193, 0415, 0555, 0572; 4: 0046; 5: 0076,
 0104; 8: 0563; 10: 0590; 22: 0048
- Wood, Anna Wharton Smith**
 1: 0055–0179, 0193–0229; 4: 0298; 7: 0599,
 0637; 10: 0359; 13: 0787; 14: 0143–
 0176; 18: 0152, 0517
- Wood, Henry A., Jr.**
 2: 0479; 16: 0080
- Wood, Henry Austin**
 14: 0205
- Wood family**
 1: 0240; 7: 0541; 15: 0802
- Wool and wool trade**
 2: 0170; 4: 0371
see also Textile industry and fabrics
- Worcester, Alfred**
 14: 0197
- World Convention of Anti-Slavery**
 12: 0356
- World War II**
 10: 0702; 12: 0450–0454
- Yearly Meeting of Women Friends, London**
 2: 0555
- Yellow fever**
 1: 0534, 0807; 2: 0093–0108, 0223–0265,
 0273–0284; 6: 0856; 10: 0285;
 13: 0598; 14: 0221, 0426
- Youth**
 2: 0310; 15: 0436–0450
see also Children
see also Students

RESEARCH COLLECTIONS IN WOMEN'S STUDIES

Grassroots Women's Organizations

Records of the Women's City Club of New York, 1916–1980

Women's Suffrage in Wisconsin

Minnesota Woman Suffrage Association Records, 1894–1923

The Margaret Sanger Papers

National Woman's Party Papers

New England Women and Their Families in the 18th and 19th Centuries

The Papers of Eleanor Roosevelt, 1933–1945

The Papers of Eleanor Roosevelt, 1945–1962

Papers of the League of Women Voters, 1918–1974

President's Commission on the Status of Women

Records of the Bureau of Vocational Information, 1908–1932

Records of the Women's Bureau of the U.S. Department of Labor, 1918–1965

Southern Women and Their Families in the 19th Century

Women's Studies Manuscript Collections from the Schlesinger Library, Radcliffe College